

(ASHOKAN)

NEW YORK 1:31,680

ULSTER COUNTY

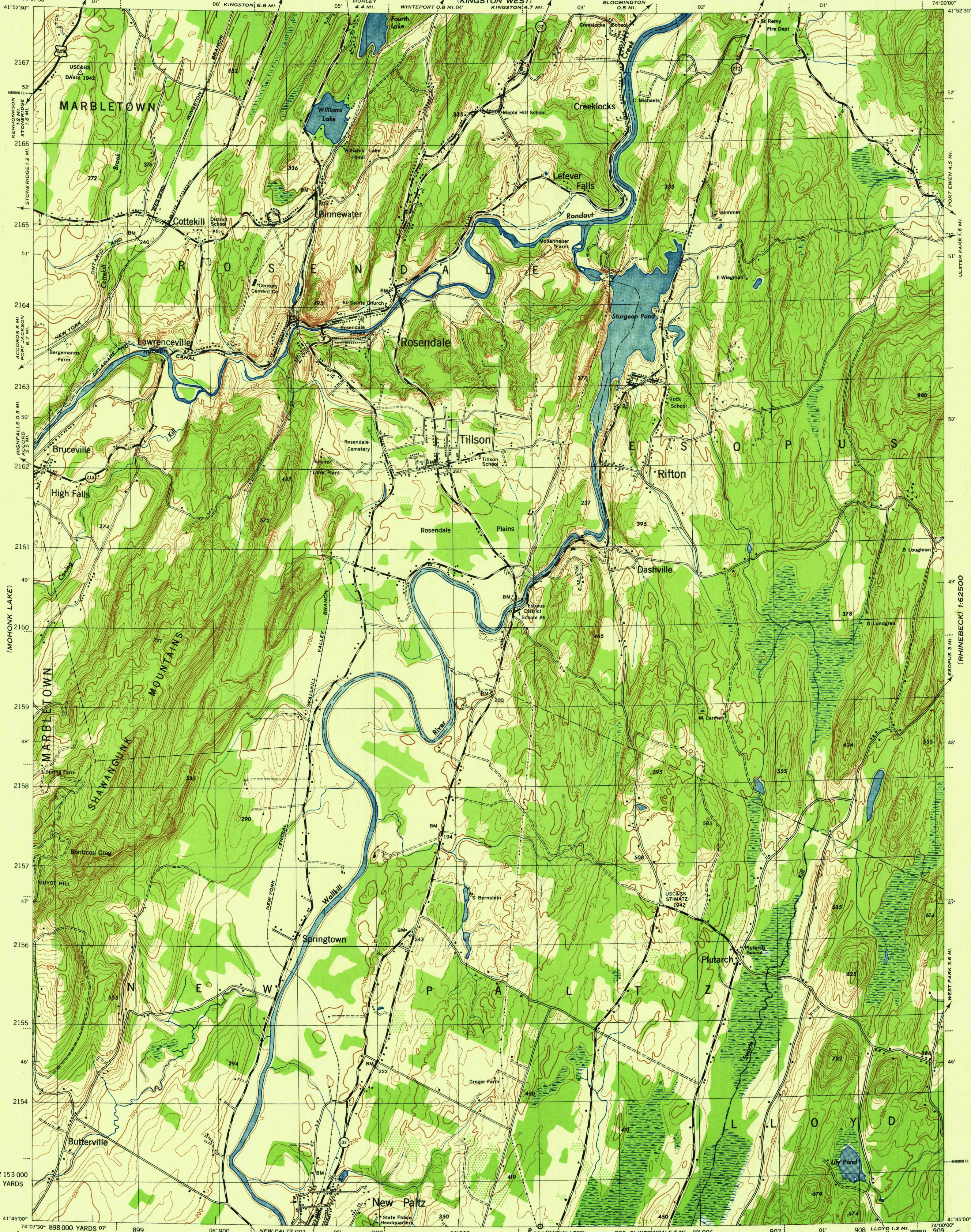
WAR DEPARTMENT  
CORPS OF ENGINEERS, U. S. ARMY

FIRST EDITION-AMS 1

ROSENDALE QUADRANGLE

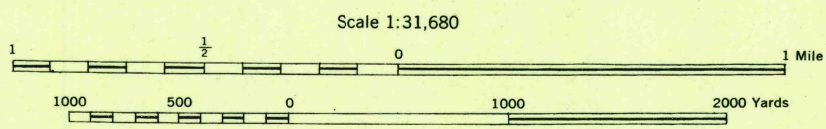
7.5 MINUTE SERIES

(RHINEBECK)  
1:62,500



First Edition 1943  
 Prepared under the direction of the Chief of Engineers,  
 U. S. Army, 1942.  
 Compiled by Fairchild Aerial Surveys, Inc.,  
 Los Angeles, California.  
 Topography by Fairchild Aerial Surveys, Inc.,  
 by Stereophotogrammetric Process.  
 Control by U. S. Coast and Geodetic Survey,  
 Aerial Photography by Fairchild Aerial Surveys, Inc., 1942.  
 Polyconic Projection, North American Datum 1927.

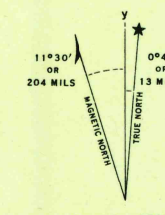
ROAD CLASSIFICATION 1943  
 Double-surface, hard-surfaced, heavy-duty road  
 Single-surface, hard-surfaced, all-weather road  
 Secondary, hard-surfaced, all-weather road  
 Dirt road  
 U. S. Route  
 State Route  
 More than two lanes indicated by note along road with tick at point of change



CONTOUR INTERVAL 20 FEET  
 DATUM IS MEAN SEA LEVEL

THOUSAND YARD GRID COMPUTED FROM GRID SYSTEM FOR PROGRESSIVE MAPS  
 IN THE U. S. "ZONE A" U. S. C. & G. S. SPECIAL PUBLICATION NO. 59  
 THE LAST THREE DIGITS OF THE GRID NUMBERS ARE OMITTED  
 "NEW YORK STATE GRID ZONE EAST" IS INDICATED BY DOTTED TICKS  
 OUTSIDE THE REAL LINE AT 500 FT. INTERVALS

NOTE: OFFICERS USING THIS MAP WILL MAKE NECESSARY CORRECTIONS AND ADJUSTMENTS WHICH COME  
 TO THEIR ATTENTION AND MAIL DIRECT TO "THE CHIEF OF ENGINEERS, WASHINGTON, D. C."



Use diagram only to obtain numerical values.  
 To determine magnetic north line, connect the  
 first point "P" on the south edge of the map  
 with the value of the angle between grid  
 and magnetic north, as plotted on the degree  
 scale of the north edge of the map.

APPROXIMATE MEAN DECLINATION 1942  
 FOR CENTER OF SHEET  
 ANNUAL MAGNETIC CHANGE 0'

USGS  
 Historical File  
 Topographic Division

ROSENDALE, N. Y.  
 N4145-7400/7.5

(GARDINER)

(CLINTONDALE)

(ROUGHERSIE)

(RHINEBECK) 1:62,500