

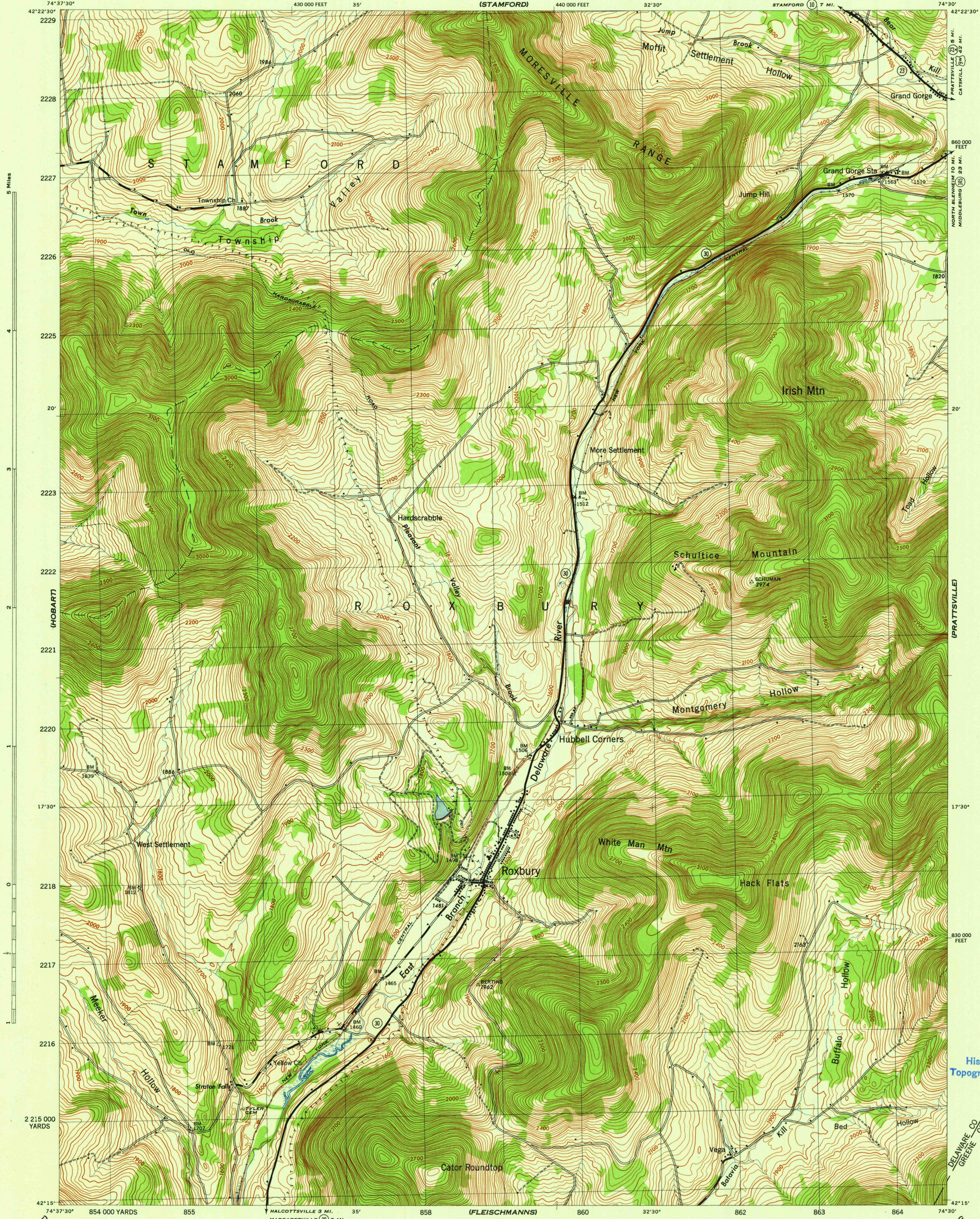
(HARRERSFIELD)

NEW YORK
SCALE 1:31,680

WAR DEPARTMENT
CORPS OF ENGINEERS, U. S. ARMY

ROXBURY QUADRANGLE
7½-MINUTE SERIES

(GILBOA)



5 Miles

(HOBART)

17°30'

2215 000 YARDS

(MARGARETVILLE)

42°22'30"
2229
2228
2227
2226
2225
20'
2223
2222
2221
2220
17°30'
2218
2217
2216
42°15'

430 000 FEET 35'
(STAMFORD) 440 000 FEET 32'30"
ONEONTA 33 MI.
STAMFORD 10 7 MI.
854 000 YARDS 855
MARGARETVILLE 3 MI.
MARGARETVILLE 28 9 MI.
858 (FLEISCHMANN'S) 860 32'30" 862 863 864 74°30'

74°37'30"
42°22'30"
860 000 FEET
NORTH BANGOR 10 MI.
MIDDLEBURGH 33 MI.
20'
2223
2222
2221
17°30'
830 000 FEET
42°15'

(PRATTSVILLE)

(WEST KILL)

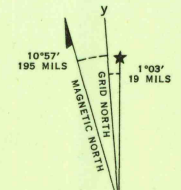
Mapped by Tennessee Valley Authority under direction of the Chief of Engineers, U. S. Army, 1945.
Control by USCGS, USGS, and TVA.
Topography by U. S. Geological Survey and Tennessee Valley Authority by Stereophotogrammetric methods (Multiplex).
Field completion surveys by TVA.
Wide-angle photography for TVA, 1943.
Polyconic projection. 1927 North American datum.

ROAD CLASSIFICATION
1945
Dependable hard-surface, heavy-duty road. ——— U. S. Route 20
Loose-surface graded, dry weather road. ——— U. S. Route 20
Secondary, hard-surface, all-weather road. ——— State Route 30
Dirt road. ——— State Route 30
More than two lanes indicated by note along road with tick at point of change. ——— LANE 2 LANE

Scale 1:31,680
1 000 500 0 1000 2000 Yards
1 Mile

CONTOUR INTERVAL 20 FEET
DATUM IS MEAN SEA LEVEL

ONE THOUSAND YARD GRID COMPUTED FROM 'GRID SYSTEM FOR PROGRESSIVE MAPS IN THE U. S. ZONE A, U. S. C. & G. S. SPECIAL PUBLICATION NO. 89'. THE LAST THREE DIGITS OF THE GRID NUMBERS ARE OMITTED.
TEN THOUSAND FOOT GRID BASED ON NEW YORK PLANE COORDINATE SYSTEM, EASTERN ZONE.
NOTE: OFFICERS USING THIS MAP WILL ADD MERIDIAN CORRECTIONS AND SECTIONS WHICH COME TO THEIR ATTENTION AND MAIL DIRECT TO THE ARMY MAP SERVICE, WASHINGTON, D. C.



APPROXIMATE MEAN DECLINATION 1944
ANNUAL MAGNETIC CHANGE 1' INCREASE

USGS
Historical File
Topographic Division

ROXBURY, N. Y.
N4215-W7430/7.5
EDITION OF 1945