

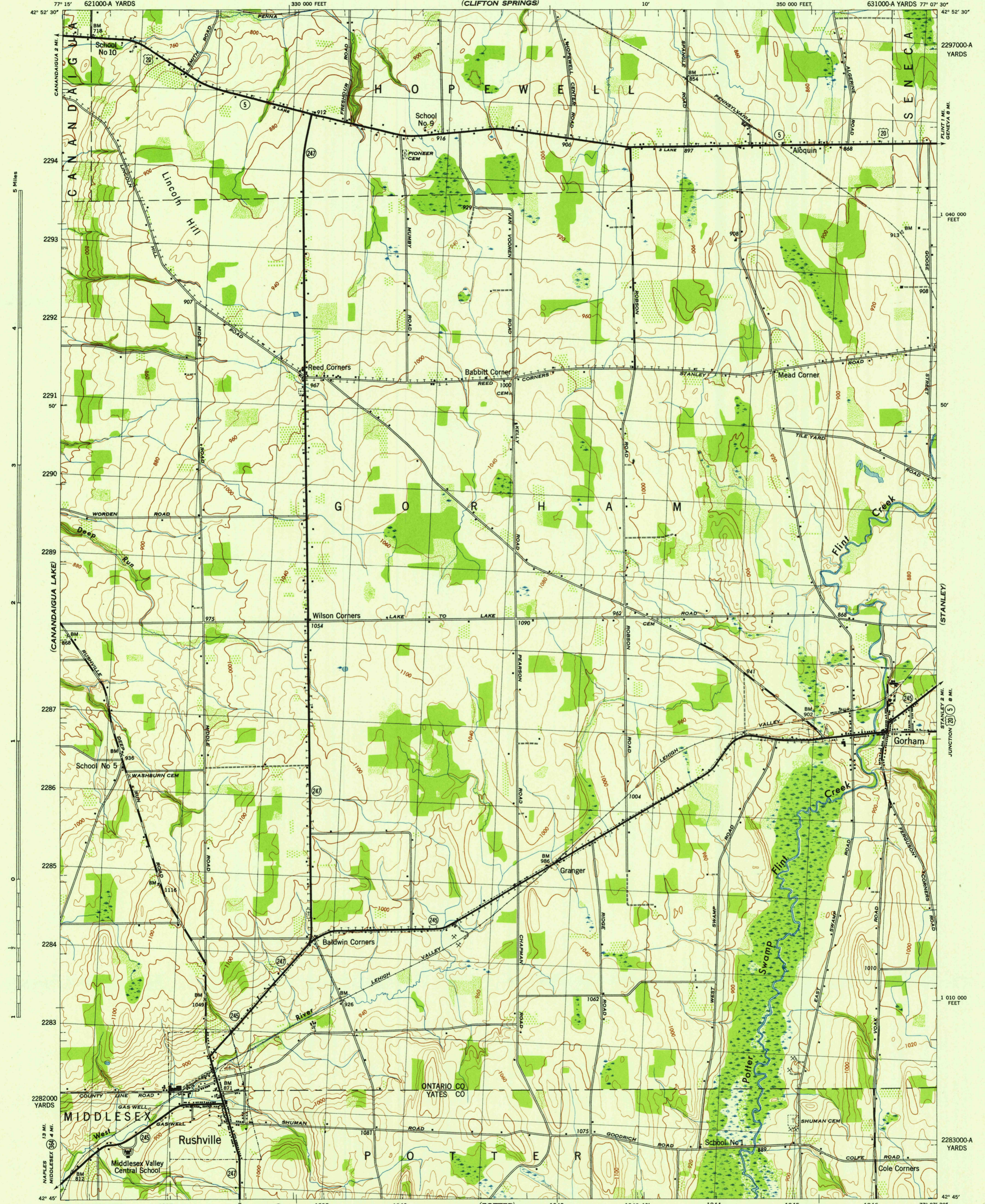
CANANDAIGUA

NEW YORK
RUSHVILLE QUADRANGLE
GRID ZONE "B"

WAR DEPARTMENT
CORPS OF ENGINEERS, U. S. ARMY

NEW YORK
RUSHVILLE QUADRANGLE
GRID ZONE "B"

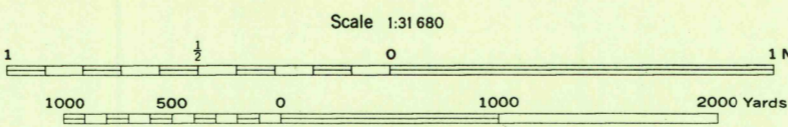
(PHELPS)



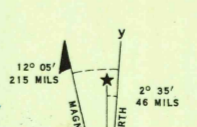
Mapped by Tennessee Valley Authority under direction of the Chief of Engineers, U. S. Army, 1942.
 Topography by U. S. Geological Survey and Tennessee Valley Authority by Stereophotogrammetric methods (Multiplex).
 Control by USCGS and TVA.
 Field completion surveys by TVA.
 Wide-angle photography for TVA, 1942.
 Polyconic projection. 1927 North American datum.

ROAD CLASSIFICATION

Dependable hard-surface, heavy-duty road. ———— U. S. Route 19
 Loose-surface graded, dry weather road. ————
 Secondary, hard-surface, all-weather road. ————
 Unimproved road. ———— State Route 247
 More than two lanes indicated by note along road with tick at point of change. ————



ONE THOUSAND YARD GRID COMPUTED FROM "GRID SYSTEM FOR PROGRESSIVE MAPS IN THE U. S. ZONE B, U. S. C. & G. S. SPECIAL PUBLICATION NO. 59" THE LAST THREE DIGITS OF THE GRID NUMBERS ARE OMITTED.
 TEN THOUSAND FOOT GRID BASED ON NEW YORK PLANE COORDINATE SYSTEM, CENTRAL ZONE.
 NOTE: OFFICES USING THIS MAP WILL MAKE NECESSARY CORRECTIONS AND ADDITIONS WHICH COME TO THEIR ATTENTION AND MAIL DIRECT TO "THE CHIEF OF ENGINEERS, WASHINGTON, D. C."



WOODLAND CLASSIFICATION

Dense woodland
 Dense brush
 Scattered brush and trees
 Orchard
 Vineyard

RUSHVILLE, N. Y.
 N4245-W7707.5/7.5
 EDITION OF 1942

USGS
 Historical File
 Topographic Division