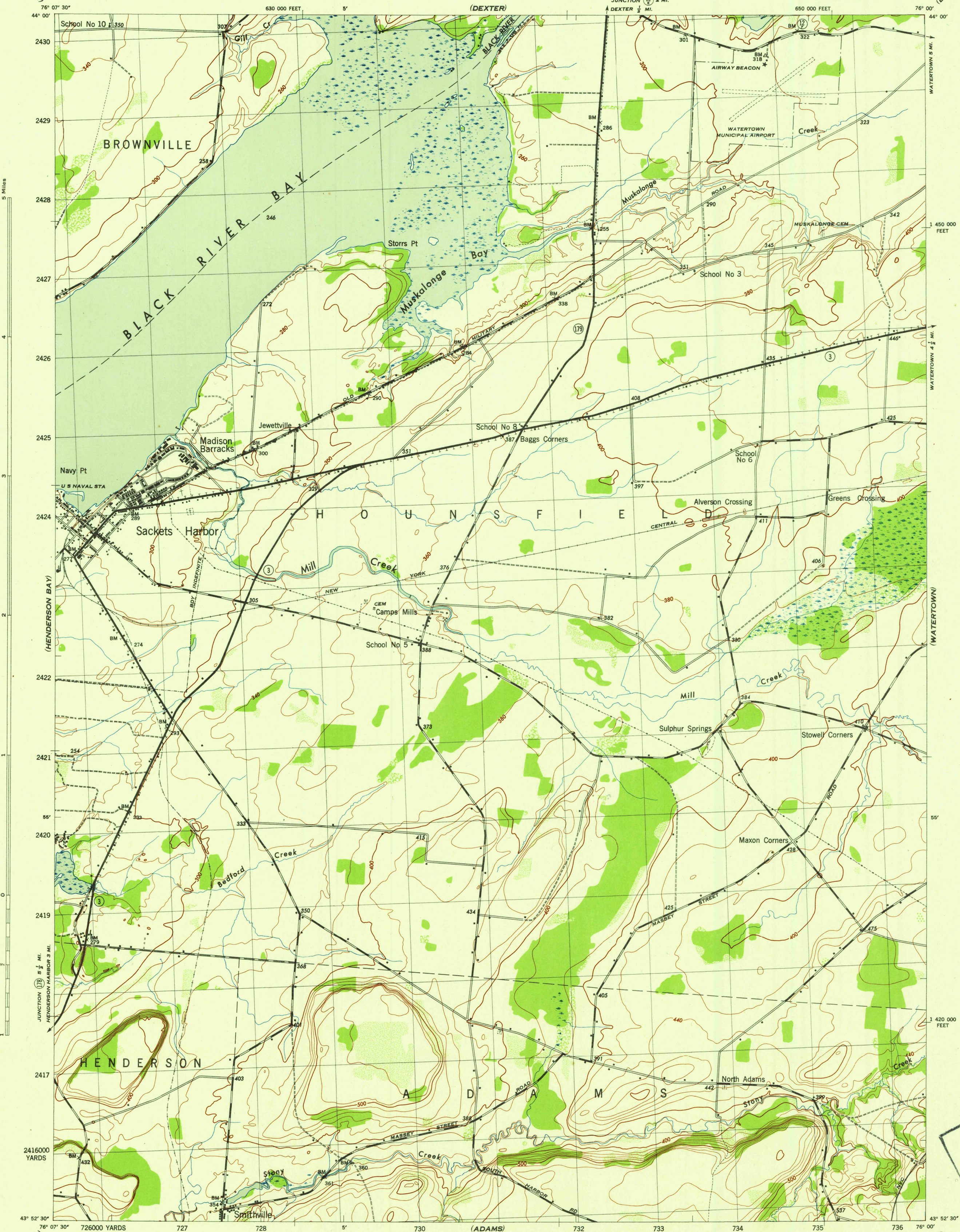


(CHAUMONT)
NEW YORK 1:31,680
(JEFFERSON COUNTY)

WAR DEPARTMENT
CORPS OF ENGINEERS, U. S. ARMY

SACKETS HARBOR QUADRANGLE
7½-MINUTE SERIES

(BROWNVILLE)



USGS
FILE COPY
Imaging and Editing

Maped by Tennessee Valley Authority under direction of the
Chief of Engineers, U. S. Army, 1942.
Topography by Tennessee Valley Authority plane-table surveys.
Culture and drainage in part compiled from aerial photographs.
Control by USCGS, and TVA.
Wide-angle photography for TVA, 1942.
Polyconic projection, 1927 North American datum.

ROAD CLASSIFICATION

Dependable hard-surface,
heavy-duty road. ——— U. S. Route (21)
Loose-surface graded,
dry weather road. ——— State Route (3)
Secondary, hard-surface,
all-weather road. ———
Dirt road. ———
More than two lanes indicated by note along road with tick at point of change.

Scale 1:31,680

1 000 500 0 1000 2000 Yards

CONTOUR INTERVAL 20 FEET
DATUM IS MEAN SEA LEVEL

ONE THOUSAND YARD GRID COMPUTED FROM "GRID SYSTEM FOR PROGRESSIVE MAPS
IN THE U. S. ZONE A, U. S. C. & G. S. SPECIAL PUBLICATION NO. 95
THE LAST THREE UNITS OF THE GRID NUMBERS ARE OMITTED
TEN THOUSAND FOOT GRID BASED ON NEW YORK PLANE COORDINATE SYSTEM, CENTRAL ZONE
NOTE: OTHERS HAVE THIS MAP WILL MAKE GREEN CORRECTIONS AND ADJUSTMENTS WHICH COME
TO THEIR ATTENTION AND MAIL DIRECT TO "THE CHIEF OF ENGINEERS, WASHINGTON, D. C."

REPRODUCED BY THE TENNESSEE VALLEY AUTHORITY 120162

USGS
Historical File
Topographic Division

APPROXIMATE MEAN
DECLINATION 1942
ANNUAL MAGNETIC CHANGE 0°

WOODLAND CLASSIFICATION

Dense woodland
Dense brush
Scattered brush and trees
Orchard
Vineyard

SACKETS HARBOR, N. Y.
N4352.5-W7600.7.5
EDITION OF 1942