

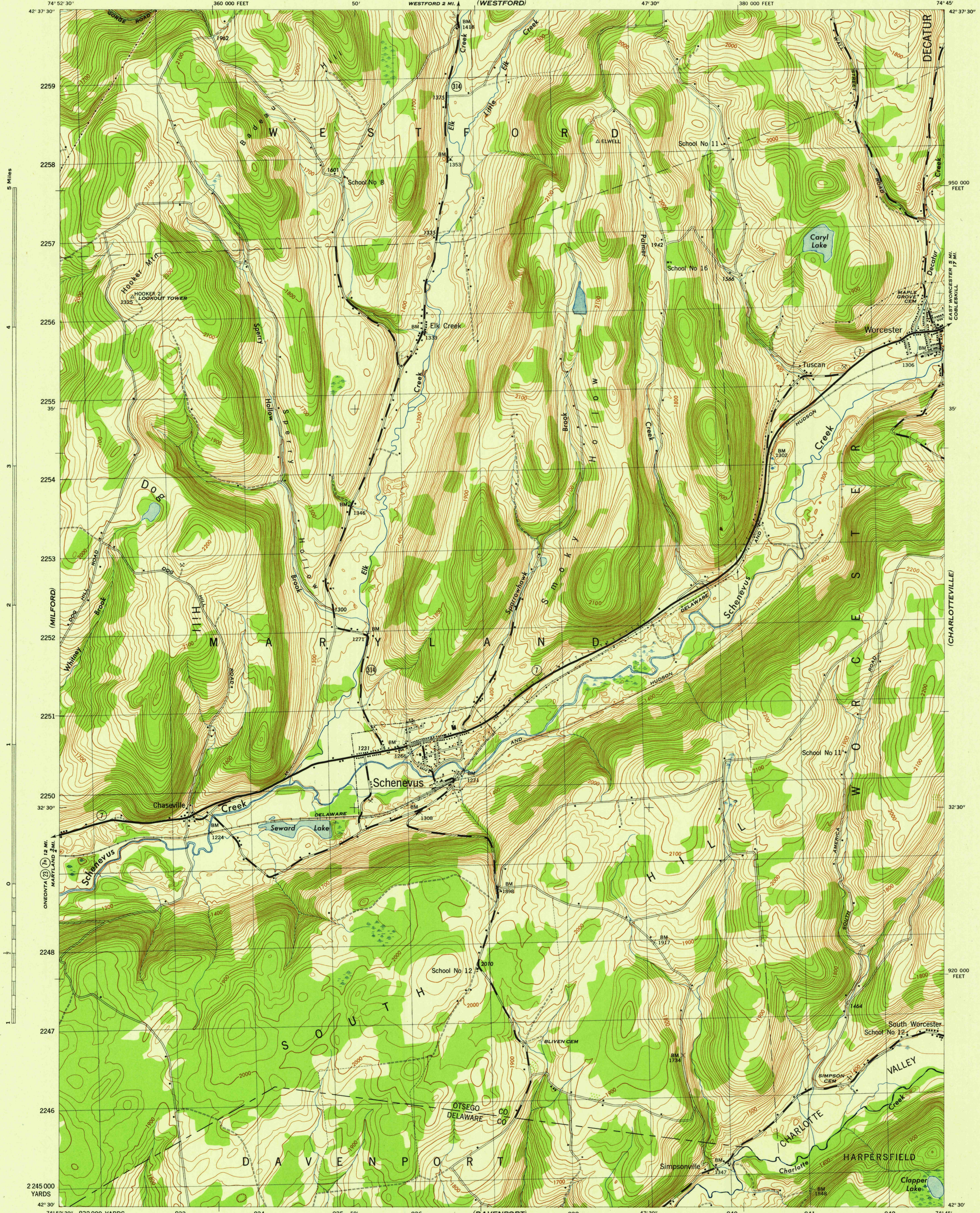
(COOPERSTOWN)

NEW YORK
SCALE 1:31,680

WAR DEPARTMENT
CORPS OF ENGINEERS, U. S. ARMY

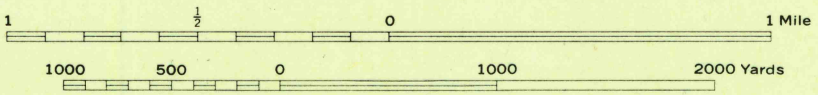
SCHENEVUS QUADRANGLE
7½-MINUTE SERIES

(SOUTH VALLEY)



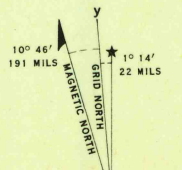
Mapped by Tennessee Valley Authority under direction of the
Chief of Engineers, U. S. Army, 1943.
Control by USCGS and TVA.
Topography by U. S. Geological Survey and Tennessee Valley Authority
by Stereophotogrammetric methods (Multiplex).
Field completion surveys by TVA.
Wide-angle photography for TVA, 1942.
Polyconic projection, 1927 North American datum.

Scale 1:31,680



CONTOUR INTERVAL 20 FEET
DATUM IS MEAN SEA LEVEL

ONE THOUSAND YARD GRID COMPUTED FROM GRID SYSTEM FOR PROGRESSIVE MAPS
IN THE U. S. ZONE A. U. S. C. & G. S. SPECIAL PUBLICATION NO. 59
THE LAST THREE DIGITS OF THE GRID NUMBERS ARE OMITTED
TEN THOUSAND FOOT GRID BASED ON NEW YORK PLANE COORDINATE SYSTEM, EASTERN ZONE
NOTE: OFFICERS USING THIS MAP WILL MAKE NECESSARY CORRECTIONS AND ADJUSTMENTS WHICH COME
TO THEIR ATTENTION AND MAIL DIRECT TO THE CHIEF OF ENGINEERS, WASHINGTON, D. C.



USGS
Historical File
Topographic Division

SCHENEVUS, N. Y.
N4230-W7445/7.5
EDITION OF 1945

ROAD CLASSIFICATION
1943
Dependable hard-surface, all-weather road. (Solid line)
Loose-surface graded, heavy-duty road. (Dashed line)
Secondary, hard-surface, all-weather road. (Dotted line)
Dirt road. (Thin solid line)
U. S. Route (20) (Thick solid line with '20' in a circle)
State Route (7) (Thin solid line with '7' in a circle)
More than two lanes indicated by note along road with tick at point of change. (Line with tick marks)
3 LANE 1/2 LANE (Line with three tick marks)

THIS MAP COMPLIES WITH THE NATIONAL STANDARD MAP ACCURACY REQUIREMENTS.

(WEST DAVENPORT)

(HARPERSFIELD)