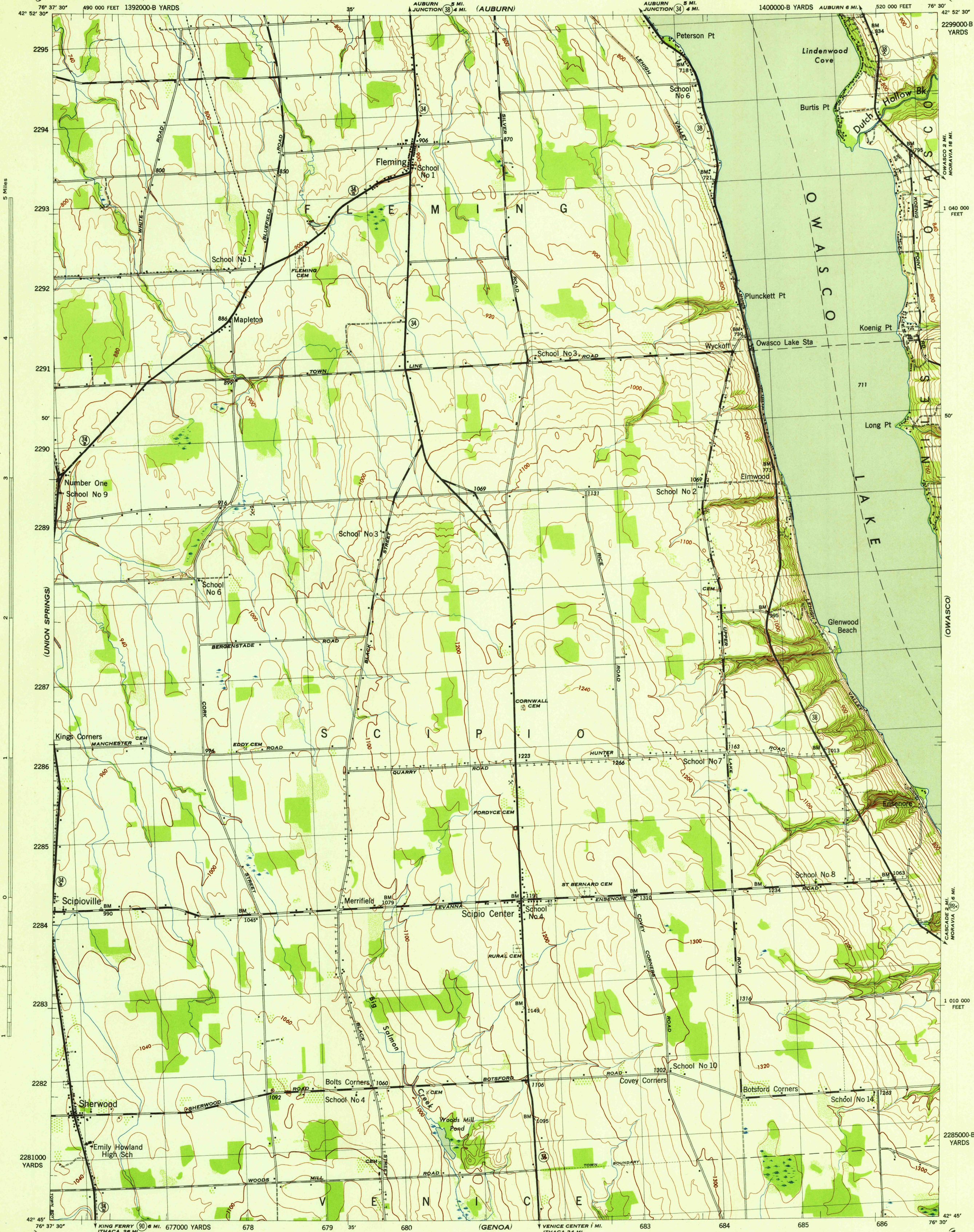


NEW YORK 1:31,680
(CAYUGA COUNTY)

WAR DEPARTMENT
CORPS OF ENGINEERS, U. S. ARMY

SCIPIO QUADRANGLE
7 1/2 - MINUTE SERIES



Mapped by Tennessee Valley Authority under direction of the Chief of Engineers, U. S. Army, 1942.
Control by USCGS and TVA.
Topography by U. S. Geological Survey and Tennessee Valley Authority by Stereophotogrammetric methods (Multiplex).
Field completion surveys by TVA.
Wide-angle photography for TVA, 1942.
Polyconic projection. 1927 North American datum.

ROAD CLASSIFICATION
Dependable hard-surface, heavy-duty road. ——— U. S. Route 16
Loose-surface graded, dry weather road. ——— State Route 12
Secondary, hard-surface, all-weather road. ———
Dirt road. ———
More than two lanes indicated by note along road with tick at point of change. 3 LANE 1-4 LANE

THIS MAP COMPLIES WITH THE NATIONAL STANDARD MAP ACCURACY REQUIREMENTS

Scale 1:31,680
1 0 1 Mile
1000 500 0 1000 2000 Yards

CONTOUR INTERVAL 20 FEET
DATUM IS MEAN SEA LEVEL

ONE THOUSAND YARD GRID COMPUTED FROM "GRID SYSTEM FOR PROGRESSIVE MAPS IN THE U. S." ZONE A, U. S. C. & G. S. SPECIAL PUBLICATION NO. 89
THE "4" GRID IS INDICATED BY BARRED TICKS
THE LAST THREE DIGITS OF THE GRID NUMBERS ARE OMITTED
TEN THOUSAND FOOT GRID BASED ON NEW YORK PLANE COORDINATE SYSTEM, CENTRAL ZONE
NOTE: OFFICERS USING THIS MAP WILL MAKE SENSIBLE CORRECTIONS AND ADDITIONS WHICH COME TO THEIR ATTENTION AND WILL DIRECT TO THE CHIEF OF ENGINEERS, WASHINGTON, D. C.

REPRODUCED BY THE TENNESSEE VALLEY AUTHORITY 130077

WOODLAND CLASSIFICATION
Dense woodland
Dense brush
Scattered brush and trees
Orchard
Vineyard

APPROXIMATE MEAN DECLINATION 1942
ANNUAL MAGNETIC CHANGE 'N' DECREASE

SCIPIO, N. Y.
N4245-W7630/7.5
EDITION OF 1943

(SHELDRAKE)

(MORAVIA)

FILE COPY
Not to be Removed From File