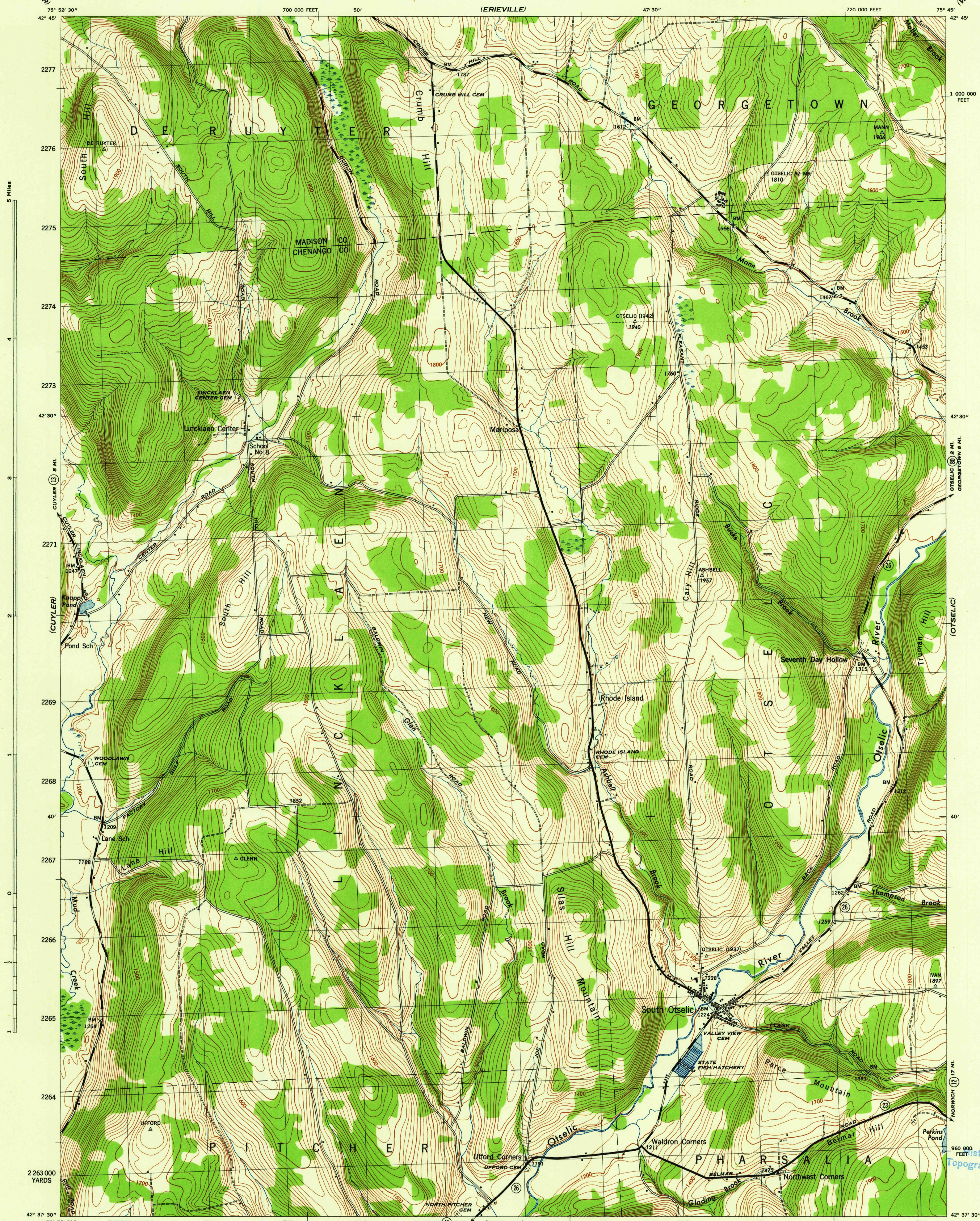


NEW YORK
SCALE 1:31,680

WAR DEPARTMENT
CORPS OF ENGINEERS, U. S. ARMY

SOUTH OTSELIC QUADRANGLE
7½-MINUTE SERIES



Maped by Tennessee Valley Authority under direction of the
Chief of Engineers, U. S. Army, 1943.
Control by USCGS, USED, and TVA.
Topography by U. S. Geological Survey and Tennessee Valley Authority
by Stereophotogrammetric methods (Multiplex).
Field completion surveys by TVA.
Wide-angle photography for TVA, 1942.
Polyconic projection. 1927 North American Datum.

ROAD CLASSIFICATION
1943
Dependable hard-surface, heavy-duty road. U. S. Route
Loose-surface graded, dry weather road.
Secondary, hard-surface, all-weather road.
Dirt road.
More than two lanes indicated by note along road with tick at point of change.
3 LANE 1 4 LANE

Scale 1:31,680
1 000 500 0 1000 2000 Yards
1 Mile

CONTOUR INTERVAL 20 FEET
DATUM IS MEAN SEA LEVEL

ONE THOUSAND YARD GRID COMPUTED FROM "GRID SYSTEM FOR PROGRESSIVE MAPS
IN THE U. S. ZONE A, U. S. C. & D. S. SPECIAL PUBLICATION NO. 99
THE LAST THREE DIGITS OF THE GRID NUMBERS ARE OMITTED
TEN THOUSAND FOOT GRID BASED ON NEW YORK PLANE COORDINATE SYSTEM, CENTRAL ZONE
NOTE: OFFICERS USING THIS MAP WILL HAVE HEREON DIRECTIONS AND NOTATIONS WHICH COME
TO THEIR ATTENTION AND WILL DIRECT TO THE CHIEF OF ENGINEERS, WASHINGTON, D. C."

9° 06' 162 MILS
10° 54' 34 MILS
APPROXIMATE MEAN
DECLINATION 1944
ANNUAL MAGNETIC CHANGE 0'

USGS
Historical File
Topographic Division

SOUTH OTSELIC, N. Y.
N4237.5-W7545.7.5
EDITION OF 1944