

(NORTH WESTERN)

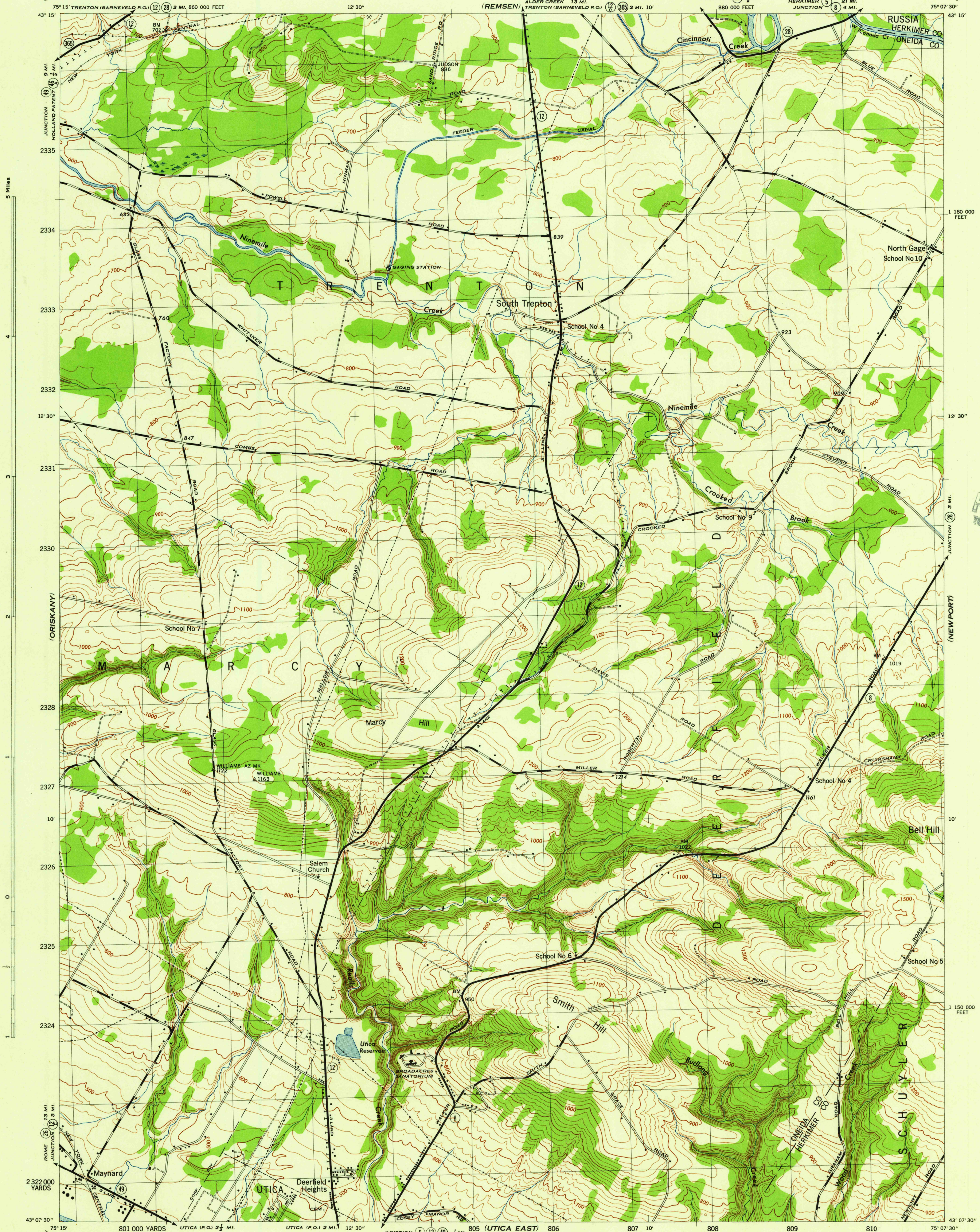
NEW YORK
SCALE 1:31,680

WAR DEPARTMENT
CORPS OF ENGINEERS, U. S. ARMY

SOUTH TRENTON QUADRANGLE

7 1/2 - MINUTE SERIES

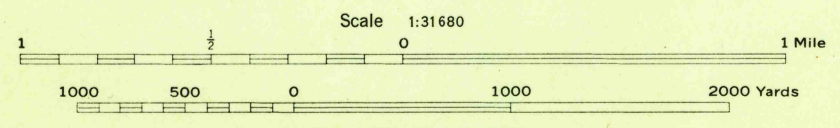
(WINCKLEY)



U.S.G.S.
FILE COPY
TOPOGRAPHIC DIVISION

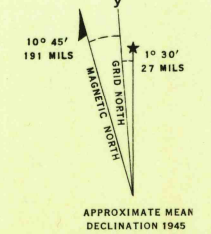
Mapped by Tennessee Valley Authority under direction of the Chief of Engineers, U. S. Army, 1943.
Control by USCGS and TVA.
Topography by U. S. Geological Survey and Tennessee Valley Authority by Stereophotogrammetric methods (Multiplex).
Field completion surveys by TVA.
Wide-angle photography for TVA, 1942.
Polyconic projection. 1927 North American Datum.

ROAD CLASSIFICATION
1943
Dependable hard-surface, heavy-duty road. U. S. Route (20)
Secondary, hard-surface, all-weather road. State Route (7)
Loose surface graded, dry-weather road.
Dirt road. 3 LANE 4 LANE
More than two lanes indicated by note along road with tick at point of change.



CONTOUR INTERVAL 20 FEET
DATUM IS MEAN SEA LEVEL

ONE THOUSAND YARD GRID COMPUTED FROM "GRID SYSTEM FOR PROGRESSIVE MAPS IN THE U. S." ZONE A U. S. G. A. U. S. G. A. S. SPECIAL PUBLICATION NO. 59
THE LAST THREE DIGITS OF THE GRID NUMBERS ARE OMITTED
TEN THOUSAND FOOT GRID BASED ON NEW YORK PLANE COORDINATE SYSTEM, CENTRAL ZONE
NOTE: OFFICERS USING THIS MAP WILL MARK PERSON CORRECTIONS AND ADDITIONS WHICH COME TO THEIR ATTENTION AND MAIL DIRECT TO "THE CHIEF OF ENGINEERS, WASHINGTON, D. C."



USGS
Historical File
Topographic Division

SOUTH TRENTON, N. Y.
N4307.5-W7507.5/7.5
EDITION OF 1945

U.S.G.S.
FILE COPY
TOPOGRAPHIC DIVISION

(UTICA WEST)

(ILLON)