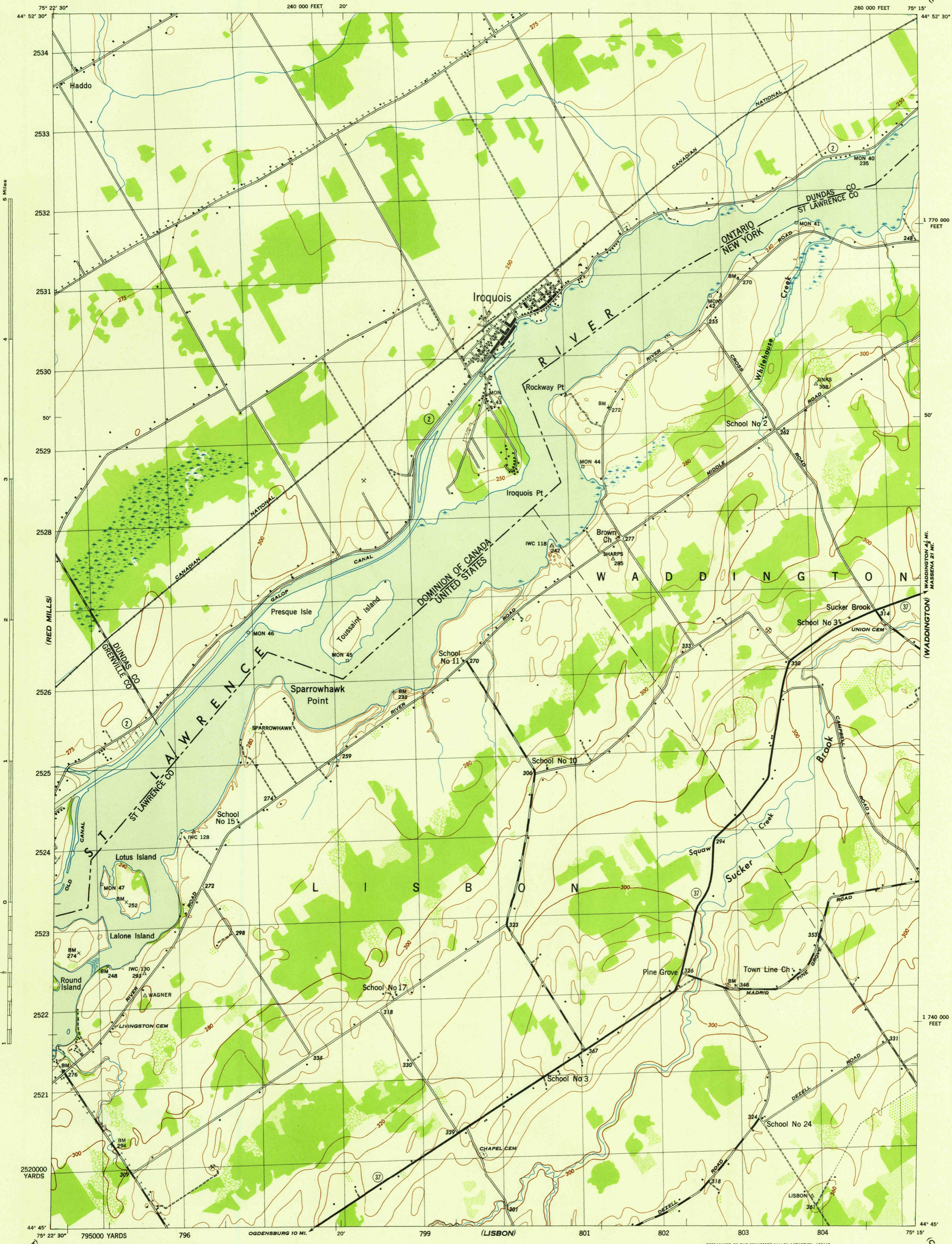


(MURPHY ISLAND)



Maped by Tennessee Valley Authority under direction of the Chief of Engineers, U. S. Army, 1942.
 Control by USCGS, USGS, USED, U. S. Lake Survey, International Waterways Commission, and TVA.
 Topography by Tennessee Valley Authority plane-table surveys.
 Culture and drainage in part compiled from aerial photographs.
 Wide-angle photography for TVA, 1942.
 Polyconic projection, 1927 North American datum.
 Canadian topography projected from maps of Canadian Department of National Defense, 1905. Revised 1938.
 Canadian planimetry revised from aerial photographs, 1942. Not field inspected.

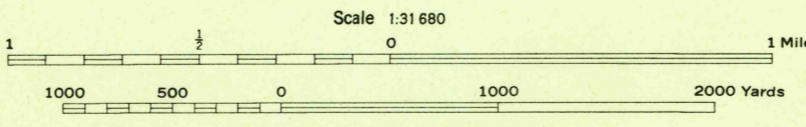
ROAD CLASSIFICATION

Dependable hard-surface, heavy-duty road. Loose-surface graded, dry-weather road. U. S. Route 19

Secondary, hard-surface, all-weather road. Dirt road. State Route 37

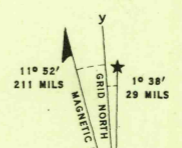
More than two lanes indicated by note along road with tick at point of change. 3 LANE 1 LANE

THIS MAP COMPLIES WITH THE NATIONAL STANDARD MAP ACCURACY REQUIREMENTS.



CONTOUR INTERVAL 20 FEET U. S.
 CONTOUR INTERVAL 25 FEET CANADA
 DATUM IS MEAN SEA LEVEL

ONE THOUSAND YARD GRID COMPUTED FROM GRID SYSTEM FOR PROGRESSIVE MAPS IN THE U. S. ZONE A. U. S. G. S. SPECIAL PUBLICATION NO. 59
 THE LAST THREE DIGITS OF THE GRID NUMBERS ARE OMITTED
 TEN THOUSAND FOOT GRID BASED ON NEW YORK PLANE COORDINATE SYSTEM, EASTERN ZONE
 NOTE: OFFICERS USING THIS MAP WILL SAVE HERE CORRECTIONS AND ADJUSTMENTS WHICH COME TO THEIR ATTENTION AND SHALL DIRECT TO THE CHIEF OF ENGINEERS, WASHINGTON, D. C.



REPRODUCED BY THE TENNESSEE VALLEY AUTHORITY 120115

SPARROWHAWK POINT, N. Y.-ONT.
 N4445-W7515/7.5
 EDITION OF 1943

USGS
 Historical File
 Topographic Division

(CANTON 15 MINUTE)