

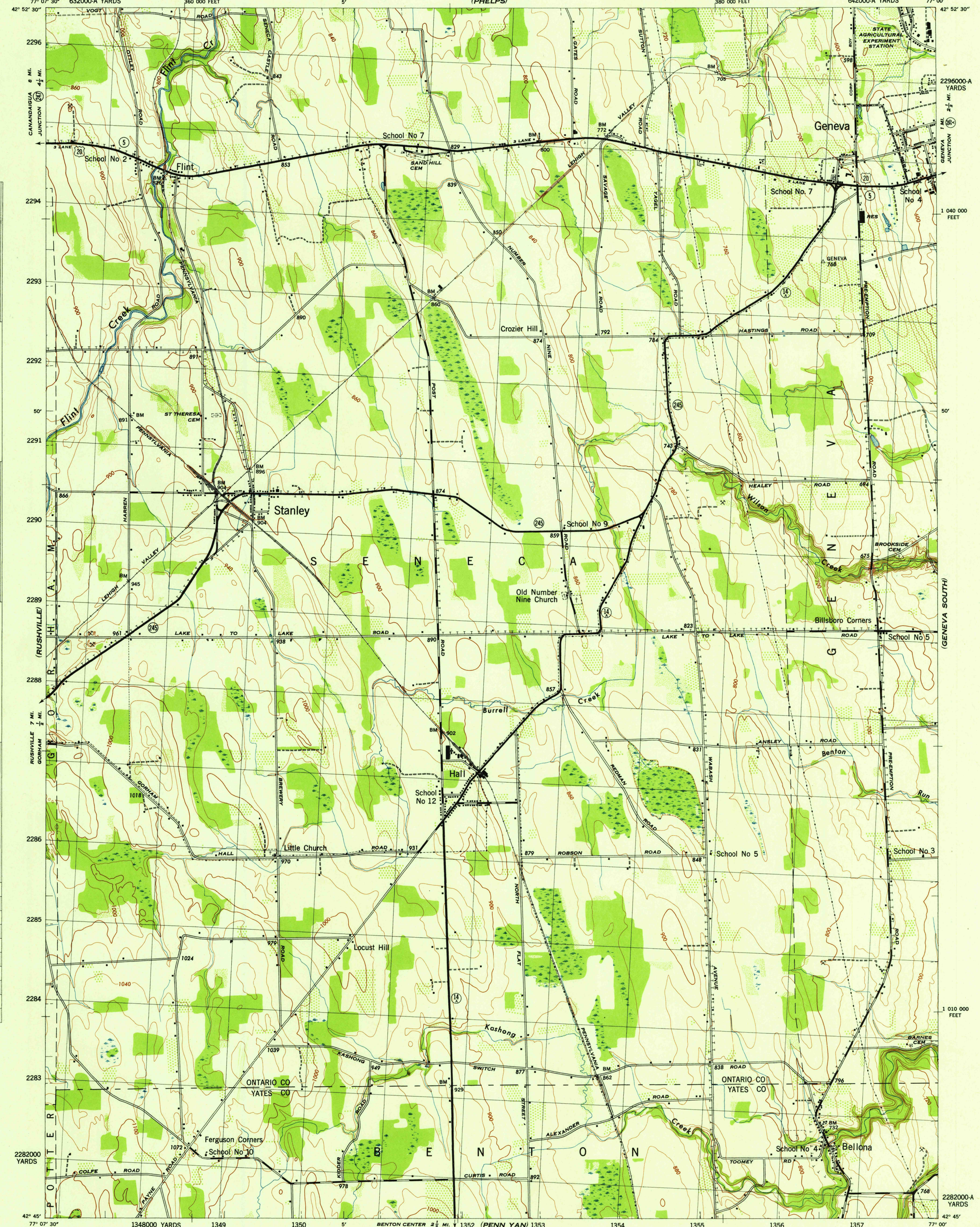
(CLIFTON SPRINGS)

NEW YORK
STANLEY QUADRANGLE
GRID ZONE "B"

WAR DEPARTMENT
CORPS OF ENGINEERS, U. S. ARMY

NEW YORK
STANLEY QUADRANGLE
GRID ZONE "B"

(GENEVA NORTH)



5 Miles

1 040 000 FEET

1 010 000 FEET

1 010 000 FEET

1 010 000 FEET

1 010 000 FEET

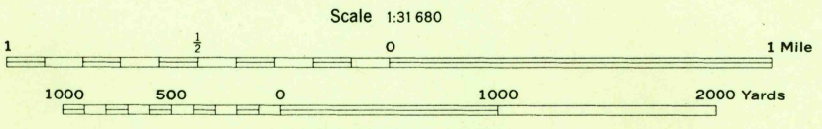
1 010 000 FEET

1 010 000 FEET

1 010 000 FEET

Mapped by Tennessee Valley Authority under direction of the Chief of Engineers, U. S. Army, 1942.
Topography by U. S. Geological Survey and Tennessee Valley Authority by Stereophotogrammetric methods (Multiple).
Control by USC&GS, USGS, U. S. Lake Survey, and TVA.
Field completion surveys by TVA.
Wide-angle photography for TVA, 1942.
Polyconic projection. 1927 North American datum.

ROAD CLASSIFICATION
Dependable hard-surface, loose-surface graded, heavy-duty road. U. S. Route
Secondary, hard-surface, dry weather road. State Route
All-weather road. Dirt road. 3 LANE 4 LANE
More than two lanes indicated by note along road with tick at point of change.



CONTOUR INTERVAL 20 FEET
DATUM IS MEAN SEA LEVEL

ONE THOUSAND YARD GRID COMPUTED FROM GRID SYSTEM FOR PROGRESSIVE MAPS IN THE U. S. ZONE B, U. S. C. & G. S. SPECIAL PUBLICATION NO. 89
THE "A" GRID IS INDICATED BY SHARPER LINES
THE LAST THREE DIGITS OF THE GRID NUMBERS ARE OMITTED
TEN THOUSAND FOOT GRID BASED ON NEW YORK PLANE COORDINATE SYSTEM, CENTRAL ZONE
NOTE: OFFICERS USING THIS MAP WILL HAVE TO MAKE CORRECTIONS AND ADJUSTMENTS WHICH COME TO THEIR ATTENTION AND MAIL DIRECT TO "THE CHIEF OF ENGINEERS, WASHINGTON, D. C."

USCS
Historical File
Topographic Division

APPROXIMATE MEAN DECLINATION 1942
ANNUAL MAGNETIC CHANGE "V" DECREASE

WOODLAND CLASSIFICATION
Dense woodland
Dense brush
Scattered brush and trees
Orchard
Vineyard

U. S. A. C. S.
FILE COPY
Inspection and Editing

STANLEY, N. Y.
N4245-W7700/7.5
EDITION OF 1942

(POTTER)

(DRESDEN)