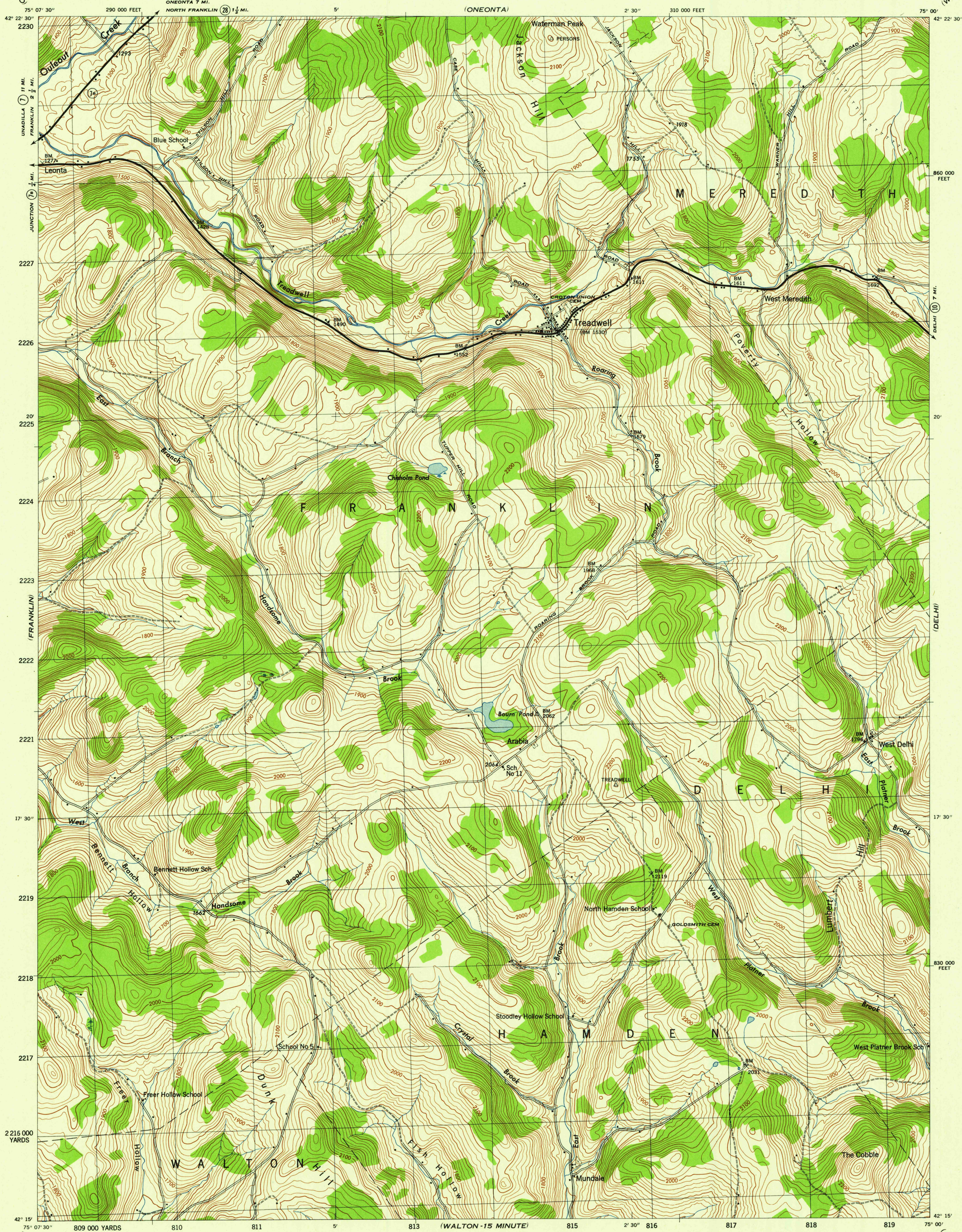


NEW YORK 1:31,680
(DELAWARE COUNTY)

WAR DEPARTMENT
CORPS OF ENGINEERS, U. S. ARMY

TREADWELL QUADRANGLE
7½-MINUTE SERIES

(WEST DAVENPORT)



Maped by Tennessee Valley Authority under direction of the
Chief of Engineers, U. S. Army, 1943.
Control by USGAS, USGS, and TVA.
Topography by U. S. Geological Survey and Tennessee Valley Authority
by Stereophotogrammetric methods (Multiplex).
Field completion surveys by TVA.
Wide-angle photography for TVA, 1942 and 1943.
Polyconic projection. 1927 North American datum.

ROAD CLASSIFICATION
1943
Dependable hard-surface,
heavy-duty road. ——— U. S. Route
Secondary, hard-surface,
all-weather road. ——— State Route
Dirt road. ———
More than two lanes indicated by note along road with tick at point of change.
3 LANE 4 LANE

Scale 1:31,680
1 000 500 0 1000 2000 Yards
1 Mile
CONTOUR INTERVAL 20 FEET
DATUM IS MEAN SEA LEVEL

ONE THOUSAND YARD GRID COMPUTED FROM "GRID SYSTEM FOR PROGRESSIVE MAPS"
IN THE U. S. ZONE A, U. S. C. & G. S. SPECIAL PUBLICATION NO. 59
THE LAST THREE DIGITS OF THE GRID NUMBERS ARE OMITTED
TEN THOUSAND FOOT GRID BASED ON NEW YORK PLANE COORDINATE SYSTEM, EASTERN ZONE
NOTE: OFFICERS USING THIS MAP WILL MAKE PERSON CORRECTIONS AND ADDITIONS WHICH COME
TO THEIR ATTENTION AND MAIL DIRECT TO "THE CHIEF OF ENGINEERS, WASHINGTON, D. C."

10° 07' 180 MILS
10° 23' 25 MILS
MAGNETIC CHARGE W
INCREASE

USGS
Historical File
Topographic Division

TREADWELL, N. Y.
N4215-W7500/7.5
EDITION OF 1945

FILE COPY
Inspection and Editing