

(CASSVILLE)

NEW YORK

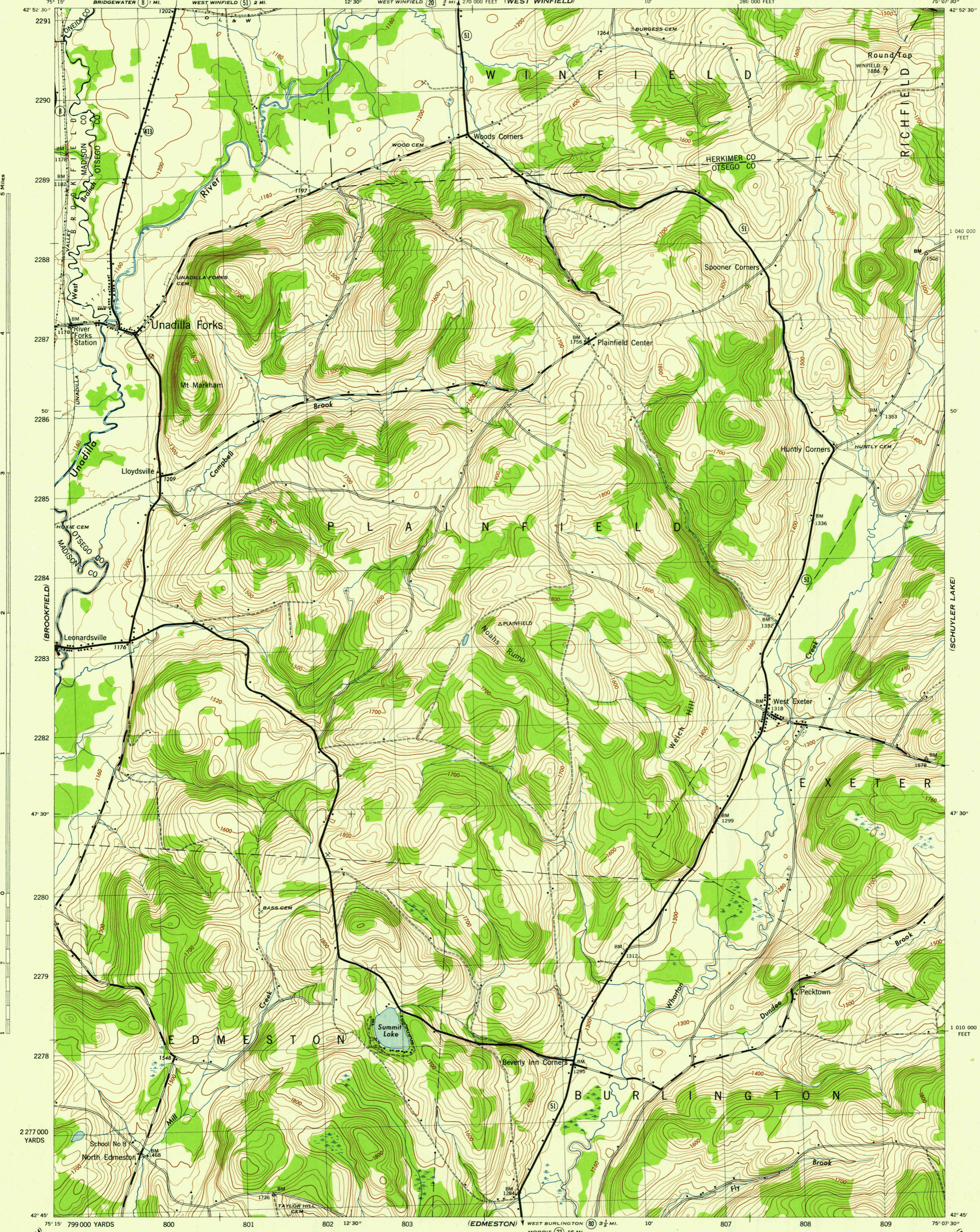
SCALE 1:31,680

WAR DEPARTMENT
CORPS OF ENGINEERS, U. S. ARMY

UNADILLA FORKS QUADRANGLE

7½-MINUTE SERIES

(MILLERS MILLS)

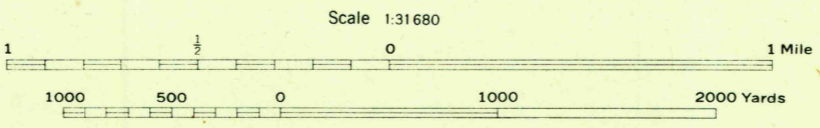


5 Miles
1 040 000 FEET
50
2286
2285
2284
2283
2282
47° 30'
2280
2279
2278
2277 000 YARDS
42° 45'

1 040 000 FEET
50
47° 30'
1 010 000 FEET
42° 45'

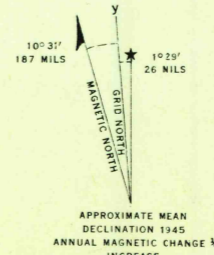
Mapped by Tennessee Valley Authority under direction of the Chief of Engineers, U. S. Army, 1943.
Control by USCGS, USGS, and TVA.
Topography by U. S. Geological Survey and Tennessee Valley Authority by Stereophotogrammetric methods (Multiples).
Field completion surveys by TVA.
Wide-angle photography by TVA, 1942.
Polyconic projection. 1927 North American datum.

ROAD CLASSIFICATION 1943
 Dependable hard surface, heavy duty road. U. S. Route (20)
 Local surface graded, dry weather road.
 Secondary, hard surface, all weather road. State Route (7)
 Dirt road.
 More than two lanes indicated by note along road with tick at point of change. LANE (4 LANE)



CONTOUR INTERVAL 20 FEET
DATUM IS MEAN SEA LEVEL

ONE THOUSAND YARD GRID COMPUTED FROM GRID SYSTEM FOR PROGRESSIVE MAPS IN THE U. S. ZONE A, U. S. C. & G. S. SPECIAL PUBLICATION NO. 59. THE LAST THREE DIGITS OF THE GRID NUMBERS ARE OMITTED.
TEN THOUSAND FOOT GRID BASED ON NEW YORK PLANE COORDINATE SYSTEM, EASTERN ZONE.
NOTE: OFFICERS USING THIS MAP WILL MAKE HEIGHT CORRECTIONS AND ADJUSTMENTS WHICH COME TO THEIR ATTENTION AND ARE SUBJECT TO THE CHIEF OF ENGINEERS, WASHINGTON, D. C.



USGS
Historical File
Topographic Division

UNADILLA FORKS, N. Y.
N4245-W7507.5/7.5
EDITION OF 1945

(NEW BERLIN NORTH)

(HARTWICK)