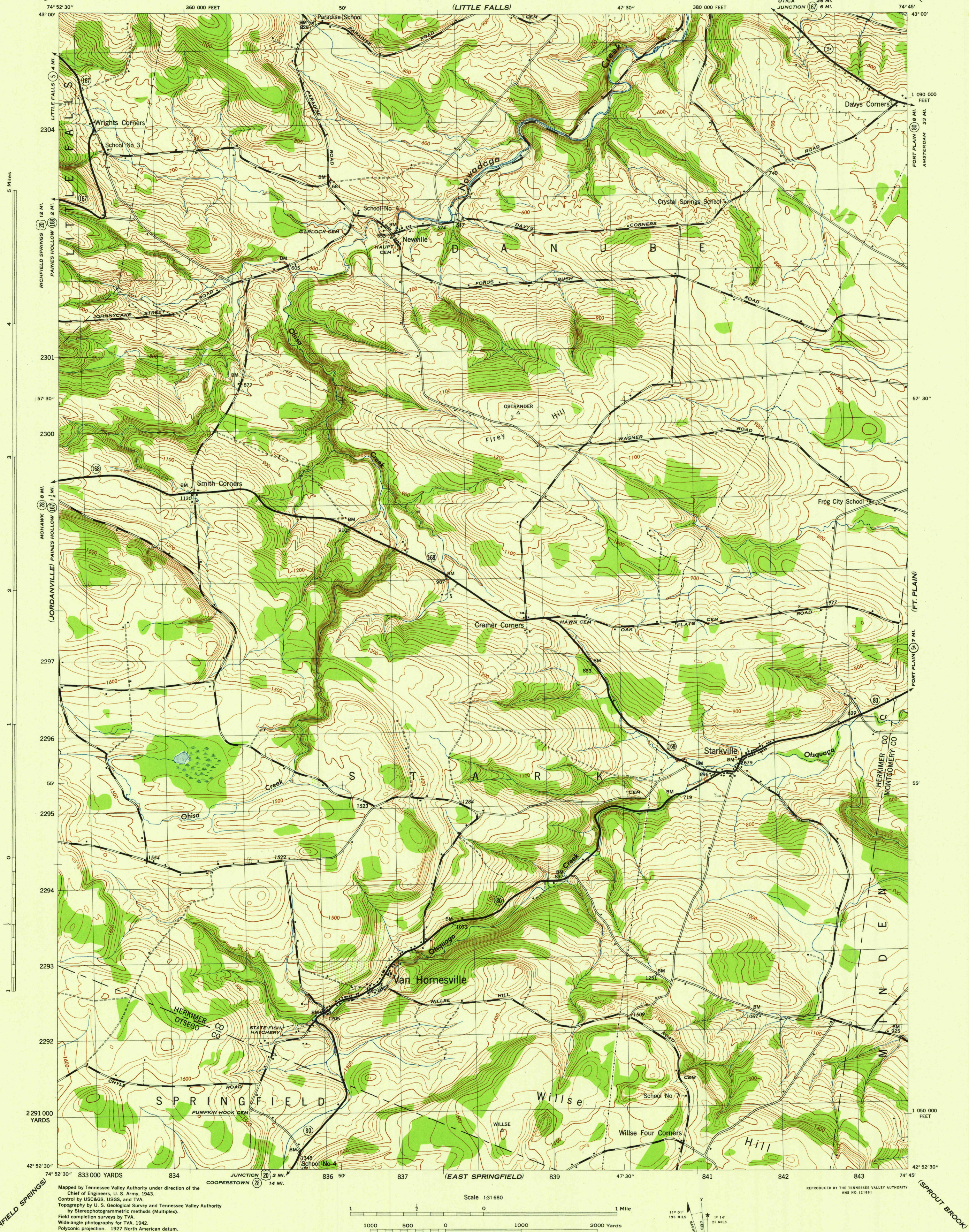


NEW YORK  
SCALE 1:31,680

WAR DEPARTMENT  
CORPS OF ENGINEERS, U. S. ARMY

VAN HORNESVILLE QUADRANGLE  
7 1/2-MINUTE SERIES



Maped by Tennessee Valley Authority under direction of the Chief of Engineers, U. S. Army, 1943.  
Control by USCGS, USGS, and TVA.  
Topography by U. S. Geological Survey and Tennessee Valley Authority by Stereophotogrammetric methods (Multiplex).  
Field completion surveys by TVA.  
Wide-angle photography for TVA, 1942.  
Polyconic projection. 1927 North American datum.

ROAD CLASSIFICATION  
1943

Dependable hard-surface, heavy-duty road. U. S. Route 20  
Secondary, hard-surface, all-weather road. State Route 7  
Dirt road. 3 LANE 4 LANE

More than two lanes indicated by note along road with tick at point of change.

THIS MAP COMPLIES WITH THE NATIONAL STANDARD MAP ACCURACY REQUIREMENTS.

Scale 1:31,680  
CONTOUR INTERVAL 20 FEET  
DATUM IS MEAN SEA LEVEL

ONE THOUSAND YARD GRID COMPUTED FROM "GRID SYSTEM FOR PROGRESSIVE MAPS IN THE U. S." ZONE A, U. S. C. & G. S. SPECIAL PUBLICATION NO. 59 IN THE LAST THREE DIGITS OF THE GRID NUMBERS ARE OMITTED.  
TEN THOUSAND FOOT GRID BASED ON NEW YORK PLANE COORDINATE SYSTEM, EASTERN ZONE  
NOTE: OFFICIALS USING THIS MAP WILL MAKE NECESSARY CORRECTIONS AND ADJUSTMENTS WHICH DUE TO THEIR ATTENTION AND MAIL DIRECT TO "THE CHIEF OF ENGINEERS, WASHINGTON, D. C."

USGS  
Historical File  
Topographic Division

11° 01' 196 MILS  
10° 14' 22 MILS  
APPROXIMATE MEAN DECLINATION 1945  
ANNUAL MAGNETIC CHANGE 1/2 INCREASE

VAN HORNESVILLE, N. Y.  
N4252.5-W7445/7.5  
EDITION OF 1945