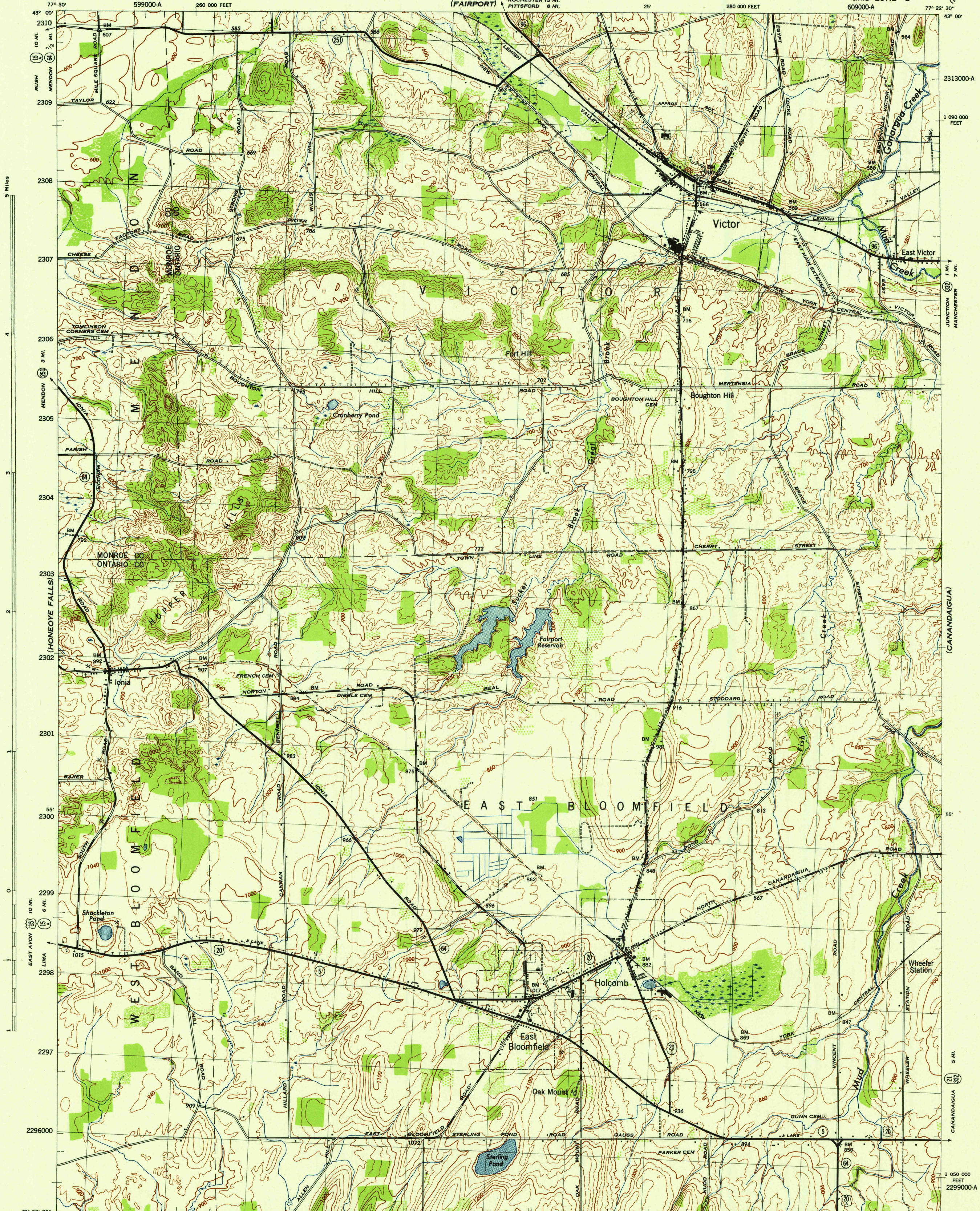


NEW YORK
VICTOR QUADRANGLE
GRID ZONE "B"

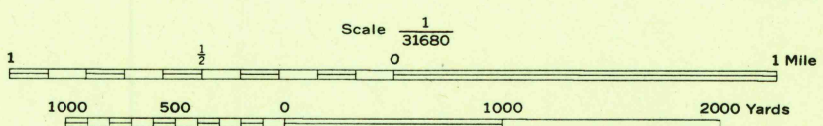
WAR DEPARTMENT
CORPS OF ENGINEERS, U. S. ARMY

NEW YORK
VICTOR QUADRANGLE
GRID ZONE "B"



Mapped by Tennessee Valley Authority under direction of the Chief of Engineers, U. S. Army, 1942.
Topography by U. S. Geological Survey and Tennessee Valley Authority by Stereophotogrammetric methods (Multiplex).
Control by USCGS, USGS, and TVA.
Field completion surveys by TVA.
Wide-angle photography by TVA, 1942.
Polyconic projection. 1927 North American datum.

ROAD CLASSIFICATION
Dependable hard-surface, heavy-duty road. U. S. Route 20
Loose-surface graded, dry weather road.
Secondary, hard-surface, all-weather road.
Unimproved road. State Route 196
More than two lanes indicated by note along road with tick at point of change. 3 LANE, 4 LANE



CONTOUR INTERVAL 20 FEET
DATUM IS MEAN SEA LEVEL

ONE THOUSAND YARD GRID COMPUTED FROM GRID SYSTEM FOR PROGRESSIVE MAPS IN THE U. S. ZONE B, U. S. G. S. SPECIAL PUBLICATION NO. 59
THE "A" GRID IS INDICATED BY DASHES
THE LAST THREE DIGITS OF THE GRID NUMBERS ARE OMITTED
TEN THOUSAND FOOT GRID BASED ON NEW YORK PLANE COORDINATE SYSTEM, CENTRAL ZONE
NOTE: OFFICIAL USE: THIS MAP SHALL BE KEPT UNDER CLOSEST CONTROL AND SHOWN ONLY TO THEIR ATTENTION AND MAIL DIRECT TO THE CHIEF OF ENGINEERS, WASHINGTON, D. C.

USGS
Historical File
Topographic Division

APPROXIMATE MEAN DECLINATION 1942 ANNUAL MAGNETIC CHANGE "N" DECREASE

WOODLAND CLASSIFICATION
Dense woodland
Dense brush
Scattered brush and trees
Orchard
Vineyard

VICTOR, N. Y.
N4252.5-W7722.5/7.5
EDITION OF 1942