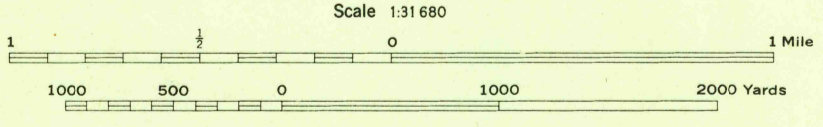


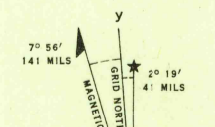
U.S.G.S  
FILE COPY  
Inspection and Editing

Mapped by Tennessee Valley Authority under direction of the Chief of Engineers, U. S. Army, 1942.  
Control by USGS and TVA.  
Topography by U. S. Geological Survey and Tennessee Valley Authority by Stereophotogrammetric methods (Multiplex).  
Field completion surveys by TVA.  
Wide-angle photography for TVA, 1942.  
Polyconic projection, 1927 North American datum.

**ROAD CLASSIFICATION**  
Dependable hard-surface, heavy-duty road. ——— U. S. Route 25  
Secondary, hard-surface, all-weather road. ——— State Route 38  
Loose-surface graded, dry weather road. ———  
Dirt road. ———  
More than two lanes indicated by note along road with tick at point of change. ——— LANE CHANGE



CONTOUR INTERVAL 20 FEET  
DATUM IS MEAN SEA LEVEL



**WOODLAND CLASSIFICATION**  
Dense woodland  
Dense brush  
Scattered brush and trees  
Orchard  
Vineyard

WEST GROTON, N. Y.  
N4230-W7622.5/7.5  
EDITION OF 1943

USGS  
Historical File  
Topographic Division