

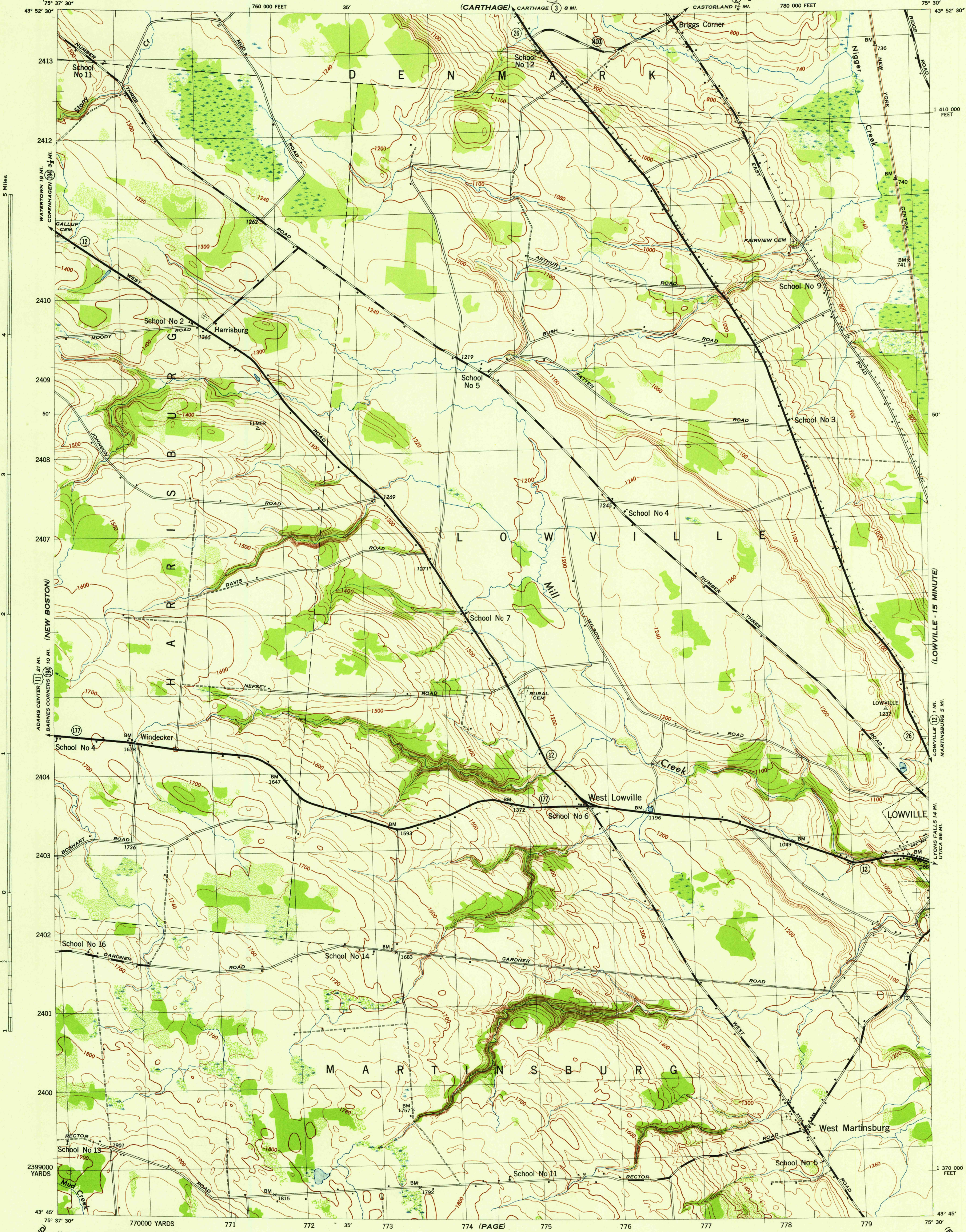
(COPENHAGEN)

NEW YORK 1:31,680 (LEWIS COUNTY)

WAR DEPARTMENT
CORPS OF ENGINEERS, U. S. ARMY

WEST LOWVILLE QUADRANGLE 7 1/2 - MINUTE SERIES

(LOWVILLE - 15 MINUTE)



Map by Tennessee Valley Authority under direction of the Chief of Engineers, U. S. Army, 1943.
Control by USCGS, USGS, and TVA.
Topography by U. S. Geological Survey and Tennessee Valley Authority by Stereophotogrammetric methods (Multiplex).
Field completion surveys by TVA.
Wide-angle photography for TVA, 1942.
Polyconic projection, 1927 North American datum.

ROAD CLASSIFICATION
1943
Dependable hard-surface, heavy-duty road. ——— U. S. Route 111
Loose-surface graded, dry weather road. ——— State Route 194
Secondary, hard-surface, all-weather road. ———
Dirt road. ———
More than two lanes indicated by note along road with tick at point of change. 3 LANE 4 LANE

THIS MAP COMPLIES WITH THE NATIONAL STANDARD MAP ACCURACY REQUIREMENTS.



CONTOUR INTERVAL 20 FEET
DATUM IS MEAN SEA LEVEL

ONE THOUSAND YARD GRID COMPUTED FROM "GRID SYSTEM FOR PROGRESSIVE MAPS IN THE U. S." - ZONE A, U. S. C. & G. S. SPECIAL PUBLICATION NO. 59
THE LAST THREE DIGITS OF THE GRID NUMBERS ARE OMITTED
TEN THOUSAND FOOT GRID BASED ON NEW YORK PLANE COORDINATE SYSTEM, CENTRAL ZONE
NOTE: OFFICERS DESIRING THIS MAP WILL MAKE REVISION CORRECTIONS AND ADDITIONS WHICH COME TO THEIR ATTENTION AND MAIL DIRECT TO "THE CHIEF OF ENGINEERS, WASHINGTON, D. C."

REPRODUCED BY THE TENNESSEE VALLEY AUTHORITY
AMS NO. 120172

WOODLAND CLASSIFICATION
Dense woodland
Dense brush
Scattered brush and trees
Orchard
Vineyard

WEST LOWVILLE, N. Y.
N4345-W7530/7.5
EDITION OF 1943

USGS
Historical File
Topographic Division