

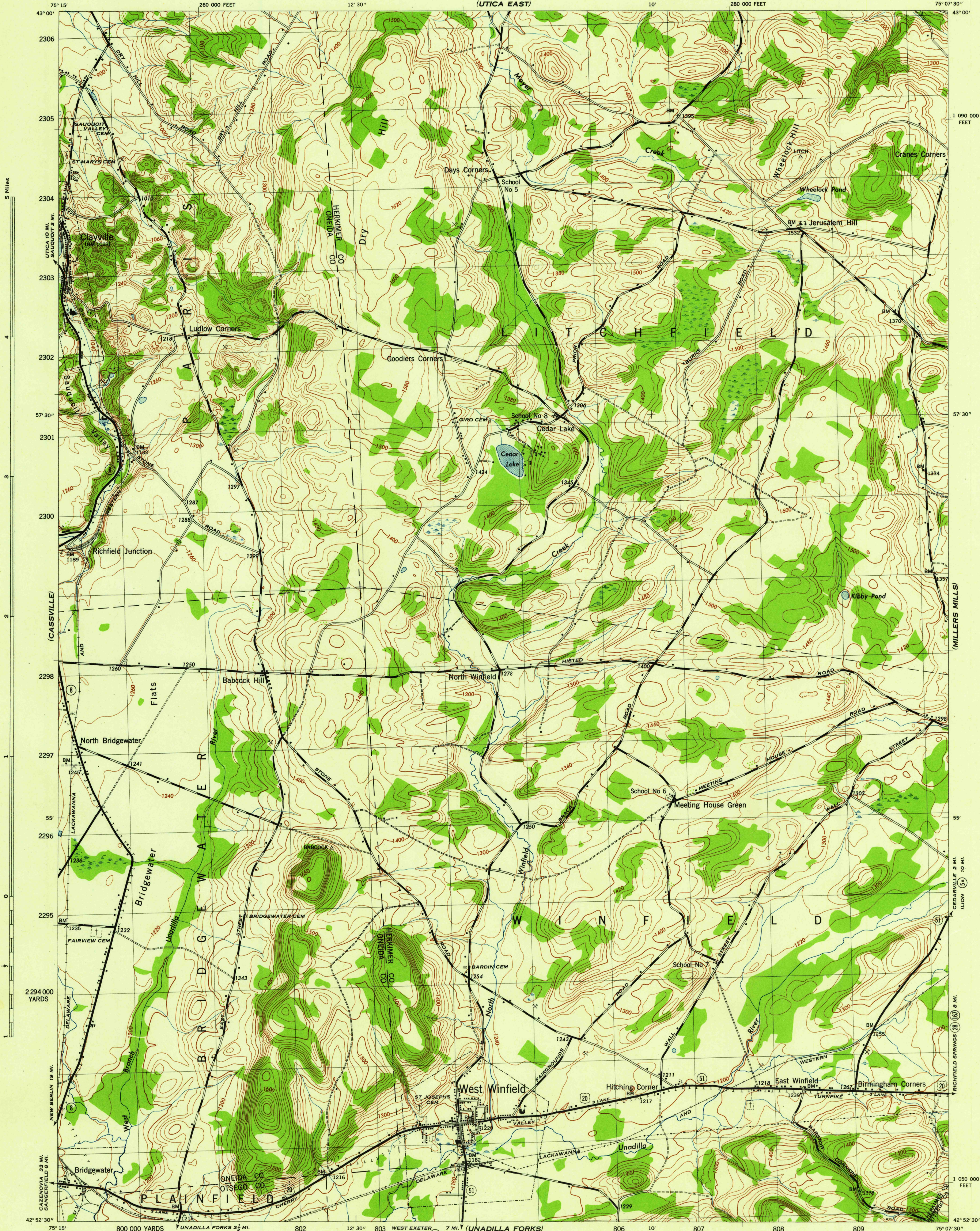
(UTICA WEST)

NEW YORK
SCALE 1:31,680

WAR DEPARTMENT
CORPS OF ENGINEERS, U. S. ARMY

WEST WINFIELD QUADRANGLE
7 1/2-MINUTE SERIES

(UTICA EAST)

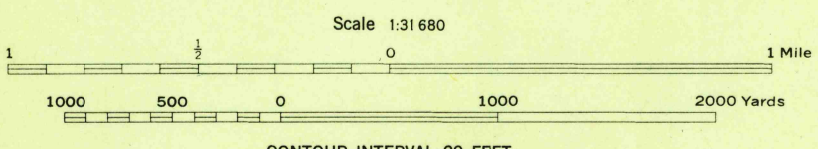


Map by Tennessee Valley Authority under direction of the Chief of Engineers, U. S. Army, 1943.
 Control by USCGS, USGS, and TVA.
 Topography by U. S. Geological Survey and Tennessee Valley Authority by Stereophotogrammetric methods (Multiplex).
 Field completion surveys by TVA, 1942.
 Wide-angle photography by TVA, 1942.
 Polyconic projection, 1927 North American datum.

ROAD CLASSIFICATION 1943

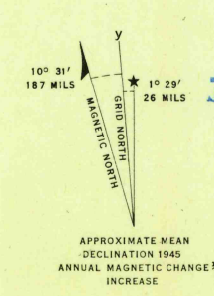
Dependable hard-surface, heavy-duty road. ——— U. S. Route 20
 Loose-surface graded, dry weather road. ——— U. S. Route 7
 Secondary, hard-surface, all-weather road. ——— State Route 14
 Dirt road. ——— Lane 1 4 Lane 7
 More than two lanes indicated by note along road with tick at point of change.

THIS MAP COMPLIES WITH THE NATIONAL STANDARD MAP ACCURACY REQUIREMENTS.



CONTOUR INTERVAL 20 FEET
DATUM IS MEAN SEA LEVEL

ONE THOUSAND YARD GRID COMPUTED FROM GRID SYSTEM FOR PROGRESSIVE MAPS IN THE U. S. - ZONE A. U. S. G. S. SPECIAL PUBLICATION NO. 59
 THE LAST THREE DIGITS OF THE GRID NUMBERS ARE OMITTED
 TEN THOUSAND FOOT GRID BASED ON NEW YORK PLANE COORDINATE SYSTEM, EASTERN ZONE
 NOTE: OFFICERS USING THIS MAP WILL MAKE NECESSARY CORRECTIONS AND ADJUSTMENTS WHICH COME TO THEIR ATTENTION AND MAIL DIRECT TO "THE CHIEF OF ENGINEERS, WASHINGTON, D. C."



USGS
Historical File
Topographic Division

WEST WINFIELD, N. Y.
N4252.5-W7507.5/7.5
EDITION OF 1943

U. S. G. S.
FILE COPY
Inclusion and Editions