

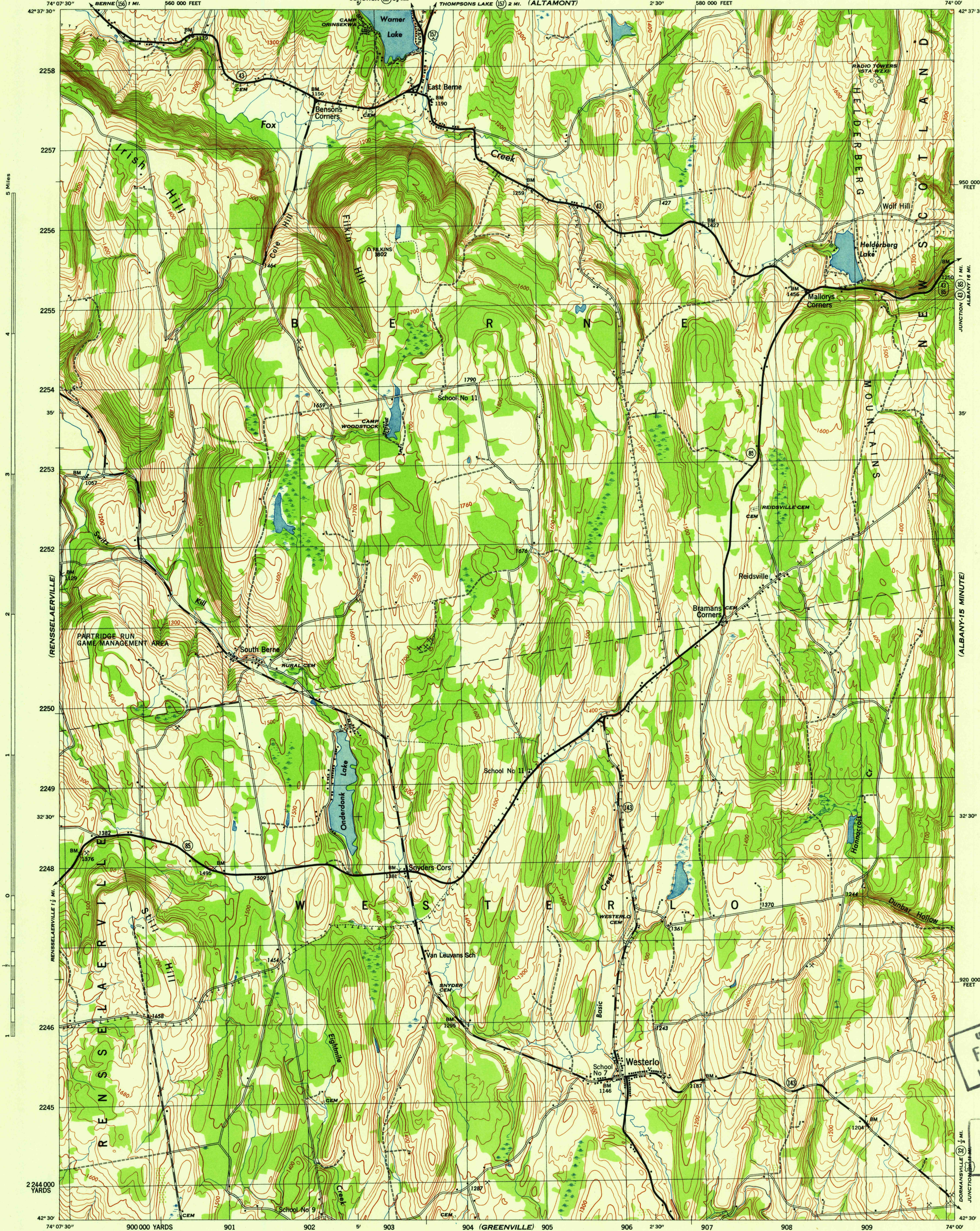
NEW YORK 1:31,680  
(ALBANY COUNTY)

WAR DEPARTMENT  
CORPS OF ENGINEERS, U. S. ARMY

WESTERLO QUADRANGLE  
7½-MINUTE SERIES

(GALLUPVILLE)

(ALBANY-15 MINUTE)



5 Miles

35'

32' 30"

2244 000 YARDS

950 000 FEET

35'

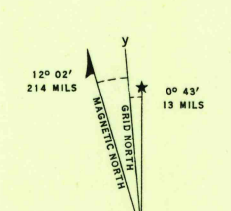
32' 30"

920 000 FEET

Mapped by Tennessee Valley Authority under direction of the Chief of Engineers, U. S. Army, 1944.  
Control by USCGS and TVA.  
Topography by U. S. Geological Survey and Tennessee Valley Authority by Stereophotogrammetric methods (Multiplex).  
Field completion surveys by TVA.  
Wide-angle photography by TVA, 1943.  
Polyconic projection. 1927 North American datum.

**ROAD CLASSIFICATION**  
1944  
Dependable hard-surface, heavy-duty road. U. S. Route (20)  
Secondary, hard-surface, all-weather road. State Route (7)  
More than two lanes indicated by note along road with tick at point of change. 3 LANE 14 LANE

**ROAD CLASSIFICATION**  
1944  
Dependable hard-surface, heavy-duty road. U. S. Route (20)  
Secondary, hard-surface, all-weather road. State Route (7)  
More than two lanes indicated by note along road with tick at point of change. 3 LANE 14 LANE



USGS  
Historical File  
Topographic Division

WESTERLO, N. Y.  
N4230-W7400/7.5  
EDITION OF 1946

U.S.G.S.  
FILE COPY  
Inspection and Editing

U.S.G.S.  
FILE COPY  
Inspection and Editing

(COXSACKE-15 MINUTE)