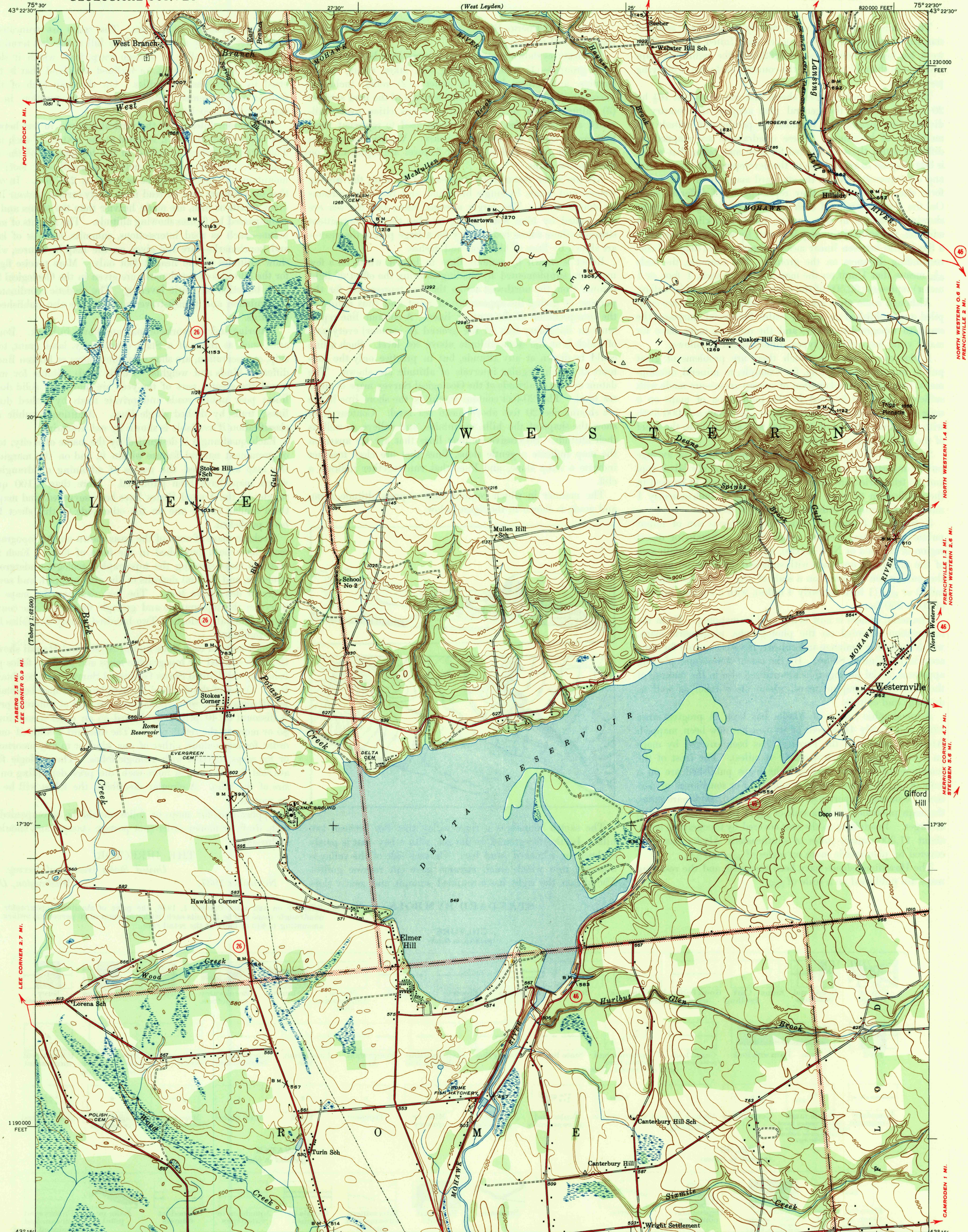


U.S.G.S.
FILE COPY
Inspection and Editing.

26 CONSTABLEVILLE 14.5 MI.
WEST LEYDEN 6 MI.
UNITED STATES
DEPARTMENT OF THE INTERIOR
GEOLOGICAL SURVEY

46 BOONVILLE 10 MI.
BOONVILLE GORGE STATE PARK 3.9 MI.
NEW YORK
(ONEIDA COUNTY)
WESTERNVILLE QUADRANGLE
7 1/2-MINUTE SERIES



Mapped by the Geological Survey
1946

ROAD CLASSIFICATION
1946
Dependable hard surface
heavy-duty road
Secondary hard surface
all weather road
More than two lanes indicated along road with tick at point of change. 3 LANE, 4 LANE

Scale 1:31680
Contour interval 20 feet
Datum is mean sea level

USGS
Historical File
Topographic Division
Inspection and Editing.

Polyconic projection. 1927 North American datum
10000 foot grid based on New York (Central)
rectangular coordinate system

WESTERNVILLE, N. Y.
Edition of 1947
N4315-W7522.5/7.5

JUL 22 1947

4280