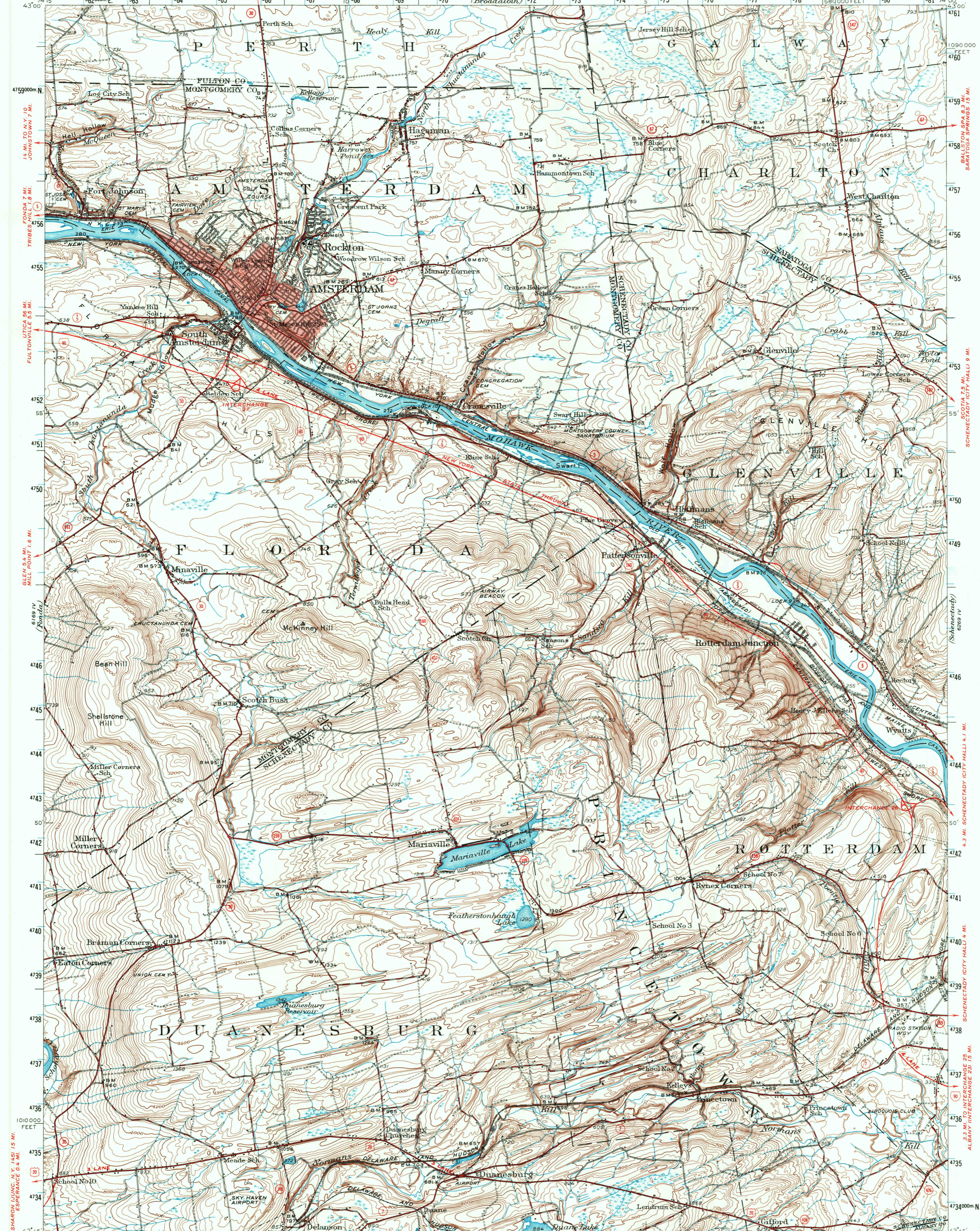
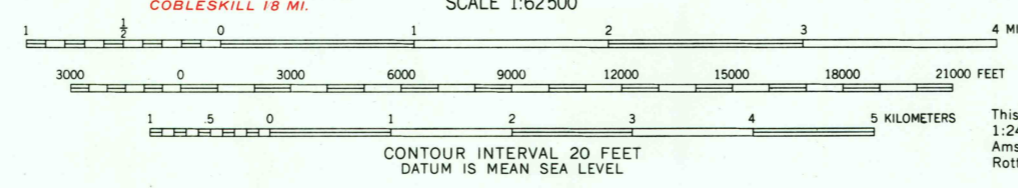
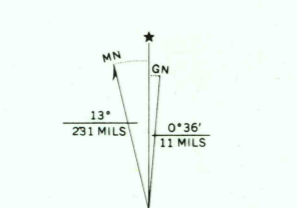


670 MI SE
(Glensville)
1:24,000

6270 MI
(Saratoga)



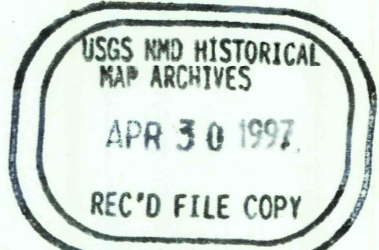
Mapped by the Geological Survey, 1928.
Revised 1947.
Polyconic projection. 1927 North American datum
10,000-foot grid based on New York (East)
rectangular coordinate system
1000-meter Universal Transverse Mercator grid ticks,
zone 18, shown in blue
Red tint indicates areas in which only
landmark buildings are shown



ROAD CLASSIFICATION
Heavy-duty — Light-duty
Medium-duty — Unimproved dirt
Interstate Route — U.S. Route — State Route

AMSTERDAM, N. Y.
N4245—W7400/15
1947
AMS 6169 I—SERIES V721

FOR SALE BY U.S. GEOLOGICAL SURVEY, WASHINGTON, D. C. 20242
A FOLDER DESCRIBING TOPOGRAPHIC MAPS AND SYMBOLS IS AVAILABLE ON REQUEST



ISSN 0-607-41144-0
9 780607 411430