

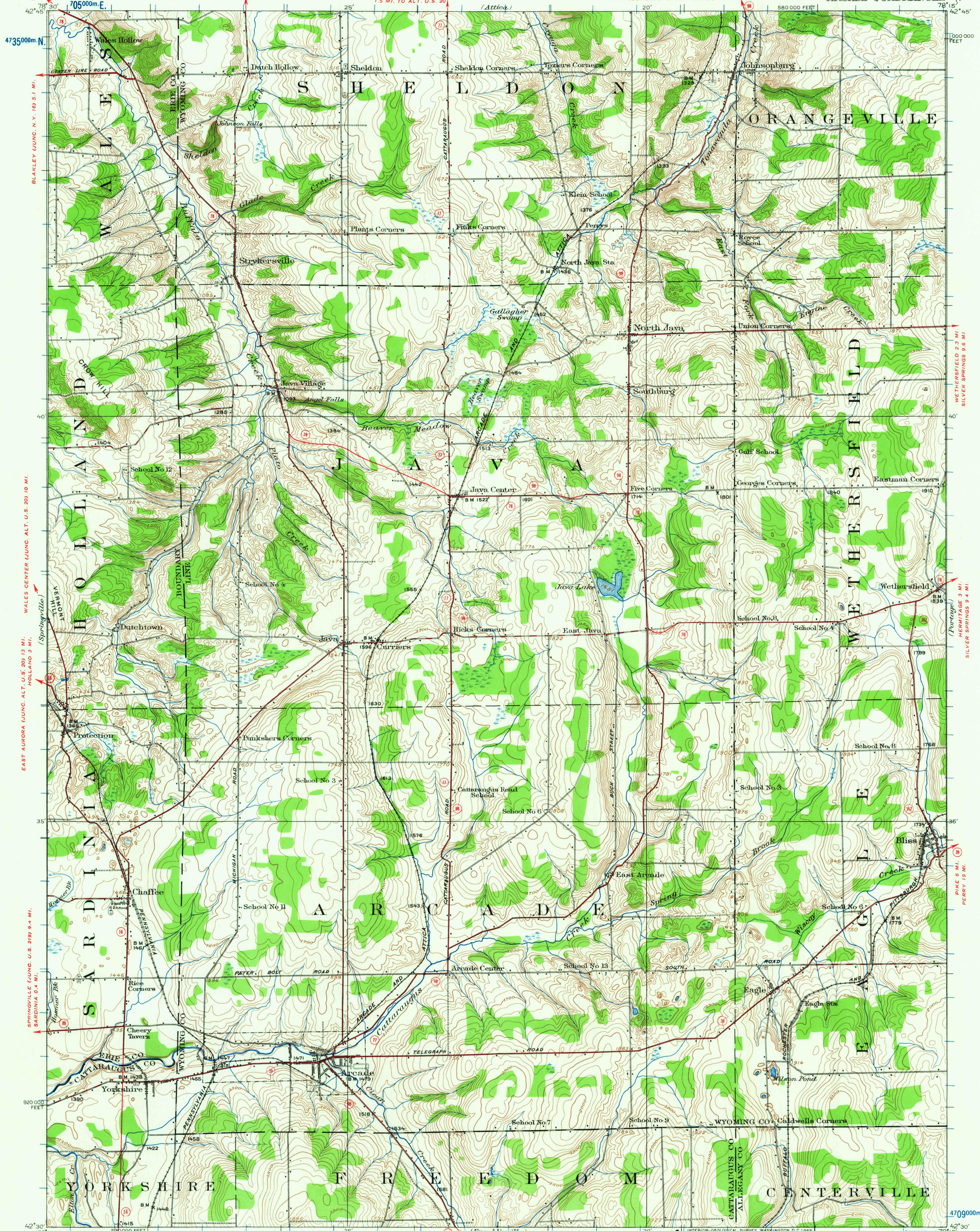
BUFFALO (VIC CENTER) 23 MI.  
EAST AURORA 6.5 MI.

UNITED STATES  
DEPARTMENT OF THE INTERIOR  
GEOLOGICAL SURVEY

STATE OF NEW YORK  
REPRESENTED BY THE  
DEPARTMENT OF PUBLIC WORKS

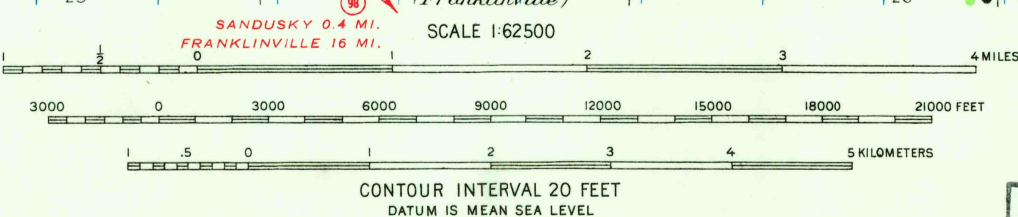
ATTICA 8.5 MI.  
VARYSBURG (JUNC. ALT. U.S. 20) 1 MI.

NEW YORK  
ARCADE QUADRANGLE



Topography by J.L. Lewis and G.A. Mock.  
Control in part by Pennsylvania, and Buffalo Rochester  
and Pittsburgh Railroads. DELEVAN 0.7 MI.  
Surveyed in 1923. FRANKLINVILLE 12 MI.

ROAD CLASSIFICATION  
Heavy-duty ——— Light-duty ———  
Medium-duty - - - - - Unimproved dirt - - - - -  
○ State Route



FOR SALE BY U.S. GEOLOGICAL SURVEY, WASHINGTON, D. C. 20242  
A FOLDER DESCRIBING TOPOGRAPHIC MAPS AND SYMBOLS IS AVAILABLE ON REQUEST

USGS  
Historical File  
Topographic Division  
U.S.G.S.  
FILE COPY  
TOPOGRAPHIC DIVISION  
POLYCONIC PROJECTION, 1927 NORTH AMERICAN DATUM  
10000-FOOT GRID BASED ON NEW YORK (WEST)  
RECTANGULAR COORDINATE SYSTEM  
1000-METER UNIVERSAL TRANSVERSE MERCATOR GRID TICS,  
1917, SHOWN IN BLUE  
ARCADE, N.Y.  
N4230-W7815/15  
1923  
MAY 11 1956  
2910