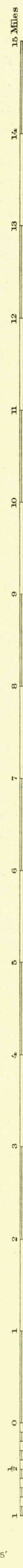
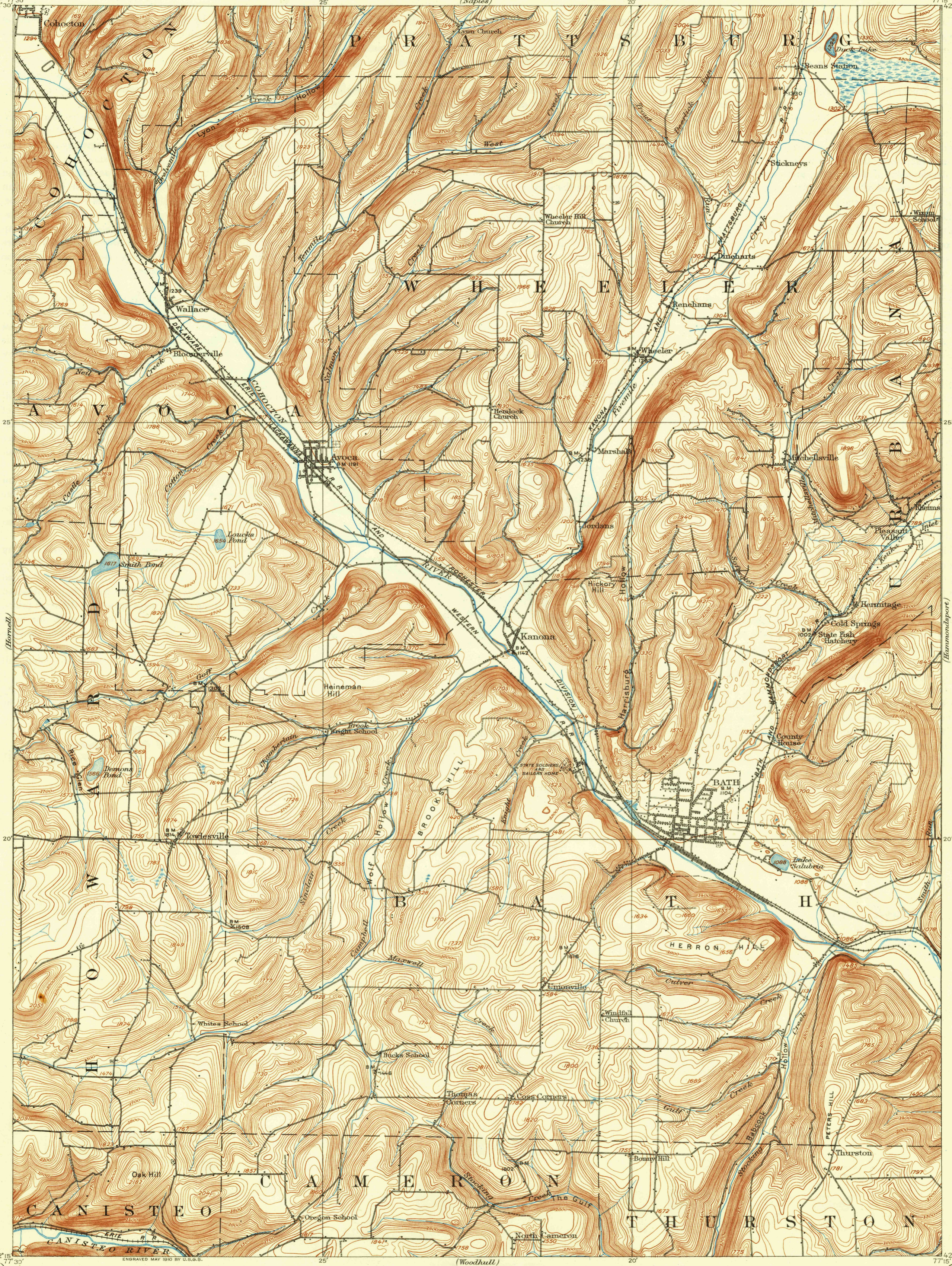


U. S. G. S.  
FILE COPY  
Inspection and Editing.

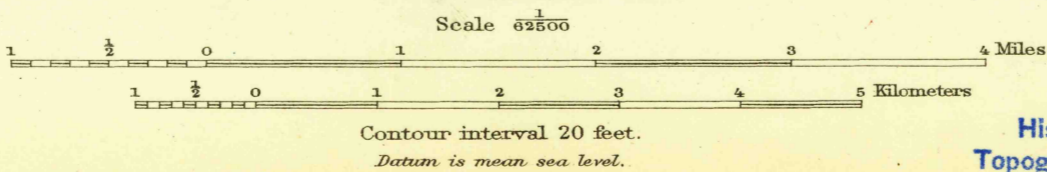
DEPARTMENT OF THE INTERIOR  
U. S. GEOLOGICAL SURVEY

STATE OF NEW YORK  
REPRESENTED BY THE  
DEPARTMENT OF PUBLIC WORKS  
(Naples)

NEW YORK  
(STEBEN COUNTY)  
BATH QUADRANGLE



ENGRAVED MAY 1910 BY U.S.G.S.  
R.B. Marshall, Chief Geographer.  
Frank Sutton, Geographer in charge.  
Topography by L.C. Fletcher.  
Control by N.Y. State Survey, W.F. Hammond,  
W.E. Green, C.H. Semper, and E.M. Eastwood.  
Surveyed in 1908.  
SURVEYED IN COOPERATION WITH THE STATE OF NEW YORK.



USGS  
Historical File  
Topographic Division

Edition of Nov. 1910, reprinted 1932  
Polyconic projection, North American datum  
JUL 14 1932 (3650)  
BATH, N.Y.

U. S. G. S.  
FILE COPY  
Inspection and Editing.