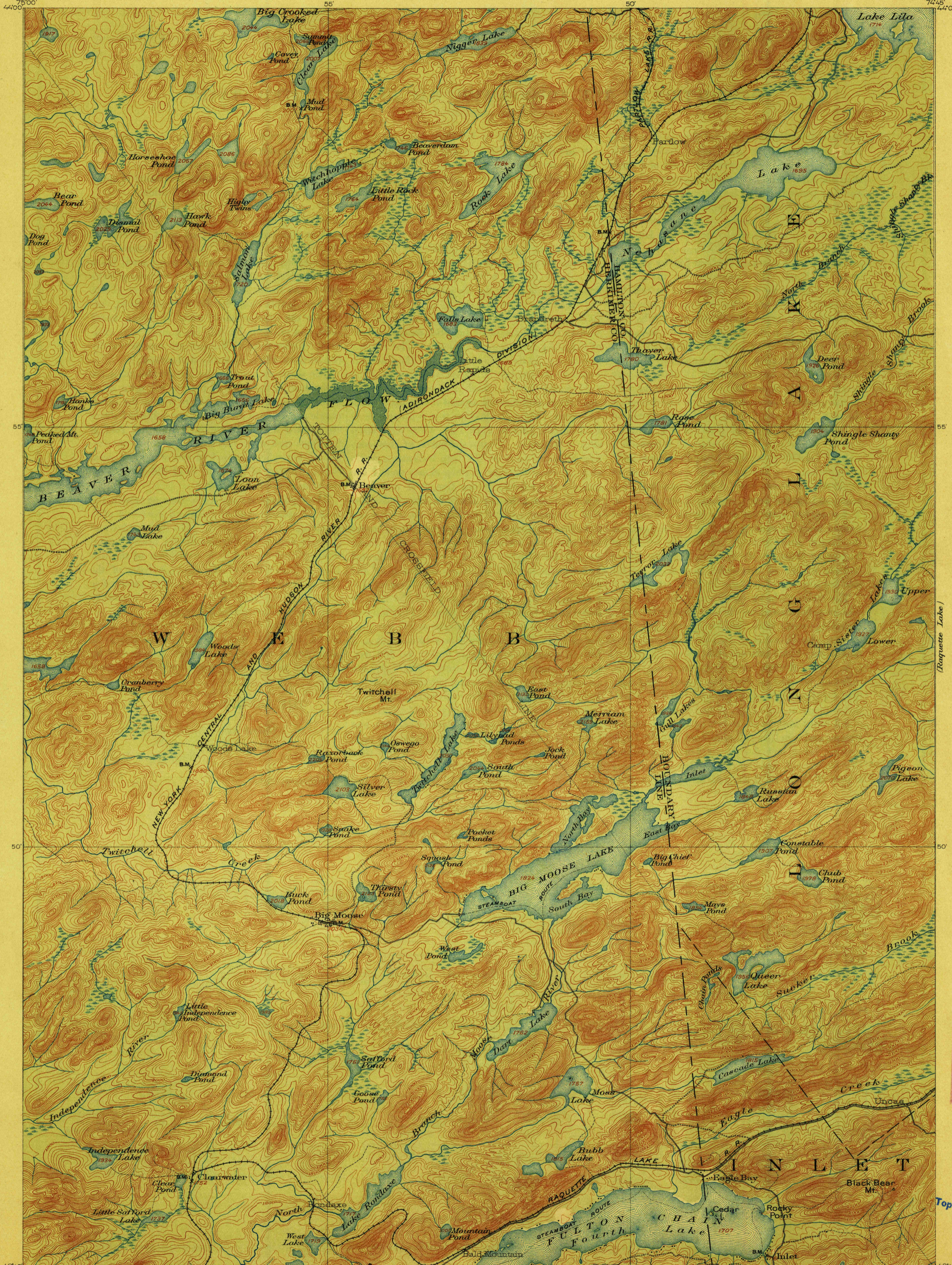


# TOPOGRAPHY

STATE OF NEW YORK  
REPRESENTED BY THE  
STATE ENGINEER AND SURVEYOR.

U.S. GEOLOGICAL SURVEY  
GEORGE OTIS SMITH, DIRECTOR

NEW YORK  
BIG MOOSE QUADRANGLE

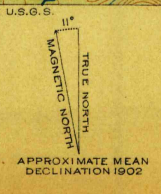


U.S.G.S.  
FILE COPY  
Ed. Div. Topographic Maps.

U.S.G.S.  
FILE COPY  
Ed. Div. Topographic Maps.

Historical File  
Topographic Division

H.M. Wilson, Geographer in charge.  
Control by W. T. Griewold and Sledge Tatam.  
Topography by Glenn S. Smith, E. G. Hamilton,  
T. G. Basinger, Geo. H. Guerdum, Robert Coe,  
C. L. Hoopes, J. M. Whitman, Jr. and T. F. Slaughter.  
Surveyed in 1900 and 1901 in cooperation  
with the State of New York.



Scale 62500  
4 Miles  
5 Kilometers  
Contour interval 20 feet.  
Datum is mean sea level.

Edition of July 1903, reprinted Aug. 1912.

August 31, 1912. 3682

BIG MOOSE, N.Y.