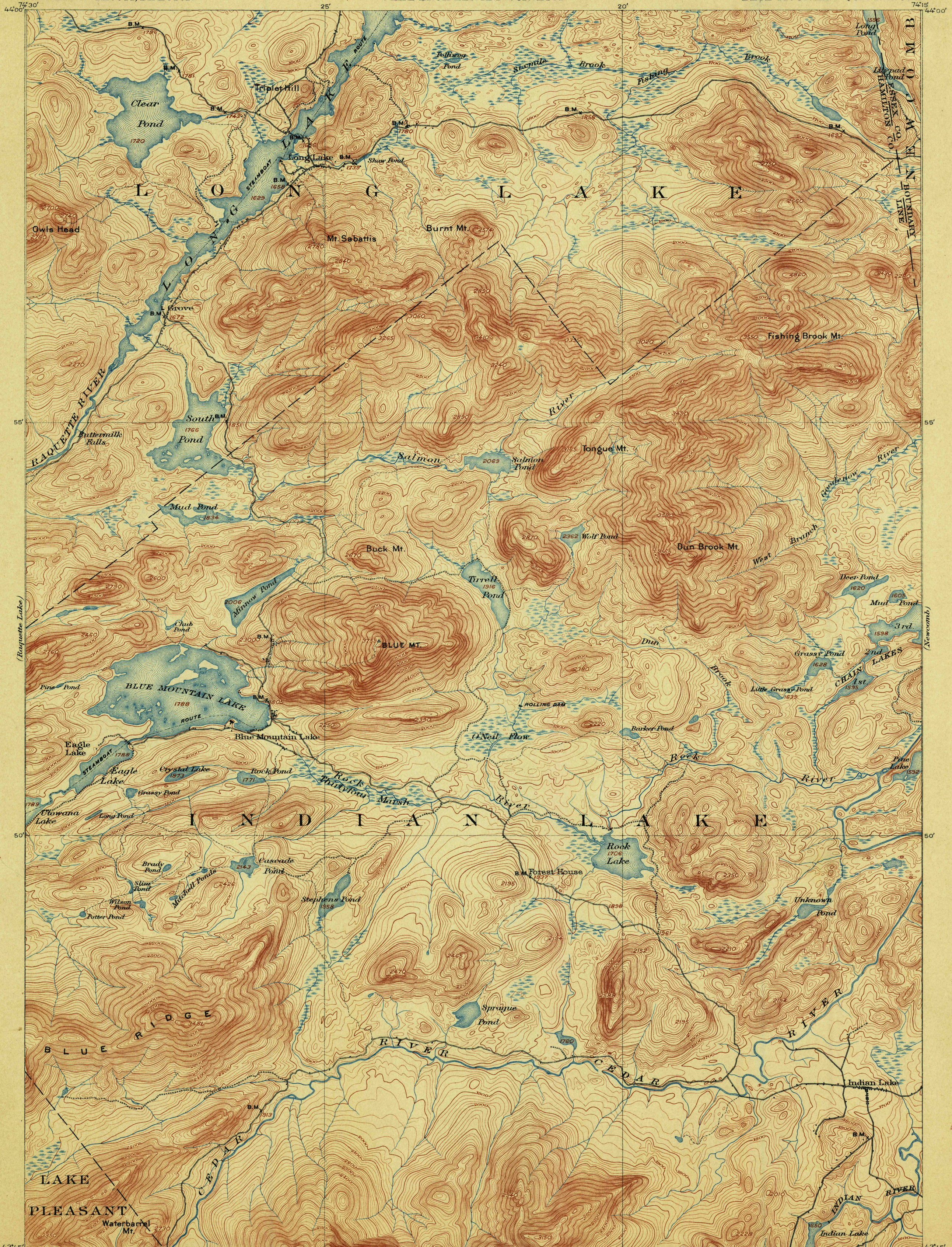


TOPOGRAPHY

STATE OF NEW YORK
EDWARD A. BOND
STATE ENGINEER AND SURVEYOR

U.S. GEOLOGICAL SURVEY
CHARLES D. WALCOTT, DIRECTOR

NEW YORK
BLUE MOUNTAIN QUADRANGLE



U.S.G.S.
FILE COPY
Ed. Div. Topographic Maps.

U.S.G.S.
FILE COPY
Ed. Div. Topographic Maps.

ENGRAVED APRIL 1903 BY U.S.G.S.
H.M. Wilson, Geographer in charge.
Triangulation by W.J. Peters and W.T. Griswold.
Topography by A.M. Walker, Glenn S. Smith and A.H. Bumstead.
Surveyed in 1899-1900.



USGS
Historical File
Topographic Division
U.S. Geological Survey,
AUG 15 1908
Ed. Div. Topographic Maps.

Edition of July 1903.

3126
NY