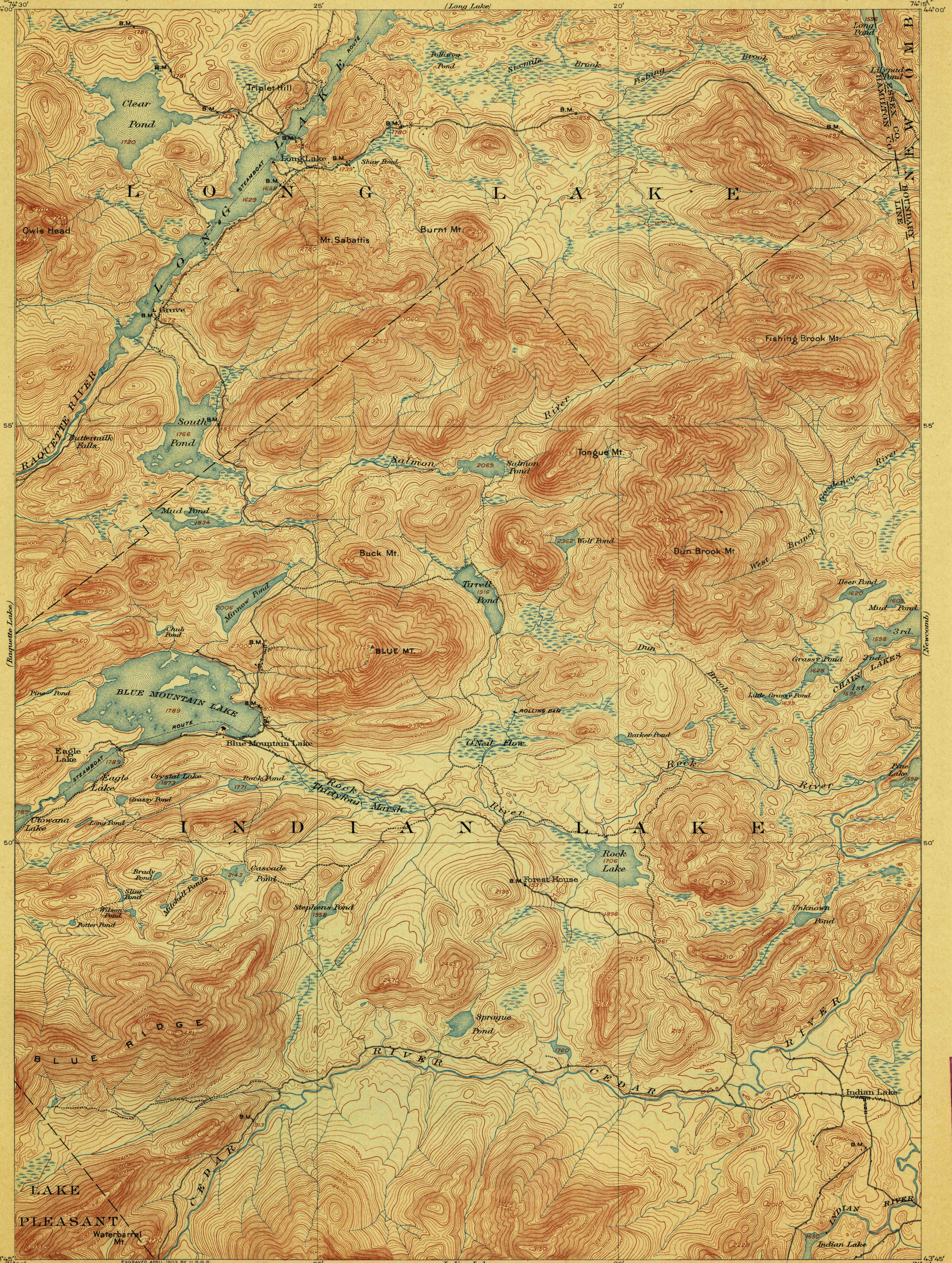


TOPOGRAPHY

STATE OF NEW YORK
REPRESENTED BY THE
STATE ENGINEER AND SURVEYOR

NEW YORK
BLUE MOUNTAIN QUADRANGLE

U.S. GEOLOGICAL SURVEY
CHARLES D. WALCOTT, DIRECTOR



U.S.G.S.
FILE COPY
Ed. Div. Topographic Maps.

ENGRAVED APRIL 1903 BY U.S.G.S.
H.M. Wilson, Geographer in charge.
Triangulation by W.J. Peters and W.T. Griewood.
Topography by A.M. Walker, Glenn S. Smith and A.H. Bumstead.
Surveyed in 1899-1900.



Edition of July 1903, reprinted Sept. 1906.

SEP 30 1906 2101

USGS
Historical File
Topographic Division

Blue Mtn. N.Y.