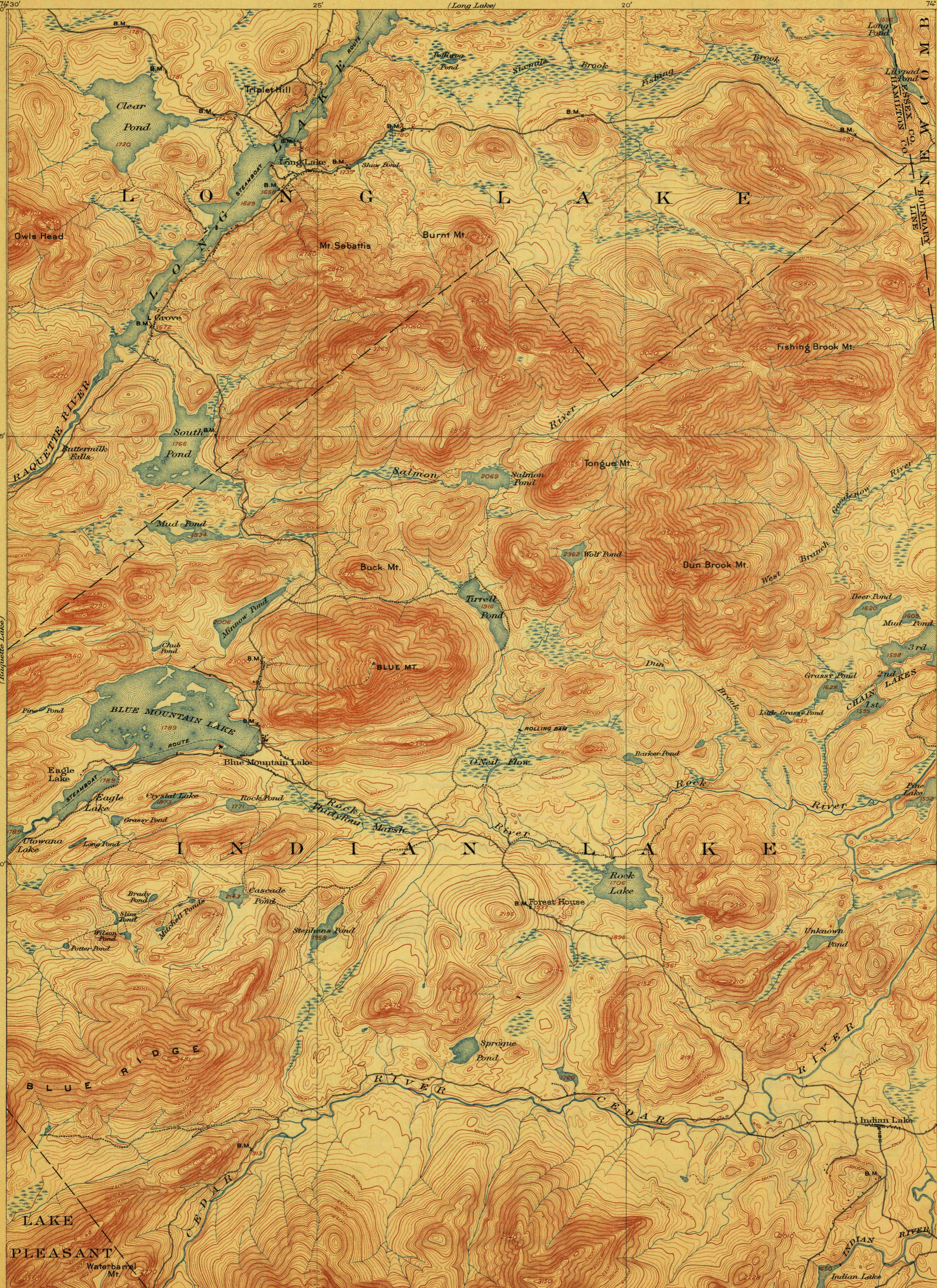


TOPOGRAPHY

STATE OF NEW YORK
REPRESENTED BY THE
STATE ENGINEER AND SURVEYOR
(Long Lake)

NEW YORK
BLUE MOUNTAIN QUADRANGLE

U.S. GEOLOGICAL SURVEY
GEORGE OTIS SMITH, DIRECTOR



U.S.G.S.
FILE COPY
Ed. Div. Topographic Maps,

U.S.G.S.
FILE COPY
Ed. Div. Topographic Maps,

ENGRAVED APRIL 1903 BY U.S.G.S.
H.M. Wilson, Geographer in charge.
Triangulation by W.J. Peters and W.T. Griswold.
Topography by A.M. Walker, Glenn S. Smith and A.H. Bumstead.
Surveyed in 1899-1900.



Edition of July 1903, reprinted Feb. 1912.

MAR 10 1912 3121
USGS
Historical File
Topographic Division
BLUE MOUNTAIN, N.Y.

(West Canada Lakes)

(Thirteenth Lake)