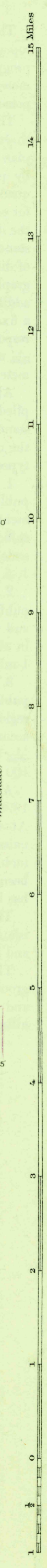
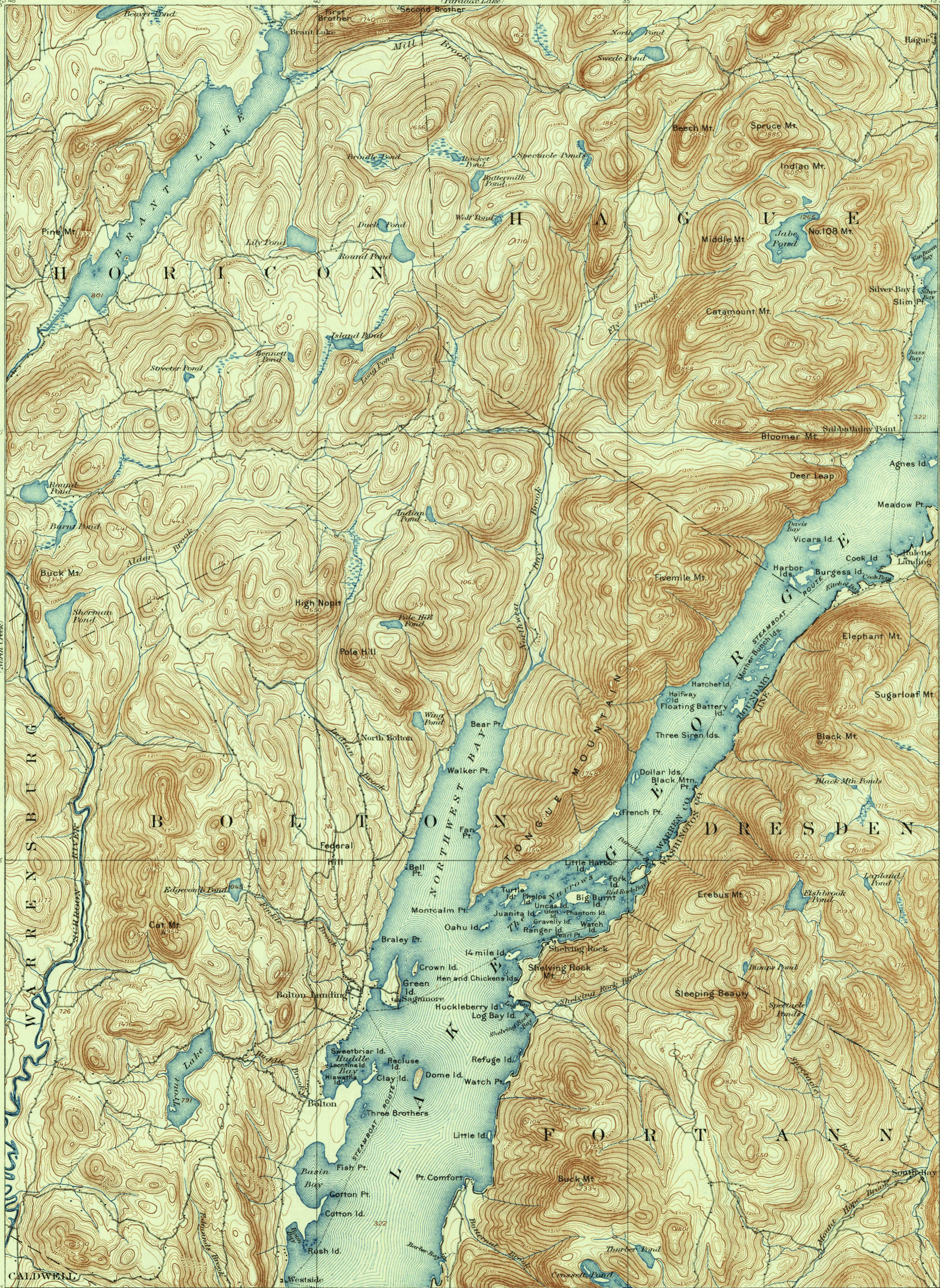


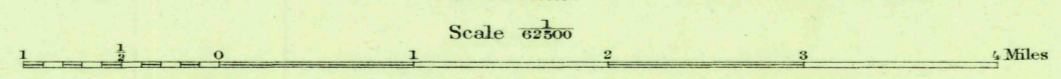
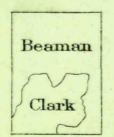
U.S.G.S.
FILE COPY
Inspection and Editing



U.S.G.S.
FILE COPY
Inspection and Editing

U.S.G.S.
FILE COPY
Inspection and Editing

Henry Gannett, Chief Topographer.
H.M. Wilson, Chief Geographer in charge.
Control by U.S.C. and G.S. and R.H. Chapman.
Topography by E.B. Clark and W.M. Beaman.
Surveyed in 1894-95 in cooperation
with the State of New York.



Contour interval 20 feet
Datum is mean sea level

Edition of Feb. 1900, reprinted 1934

Polyconic projection

U.S.G.S.
Historical File
Topographic Division

BOLTON, N.Y.

SEP 29 1934 (3905)

3905