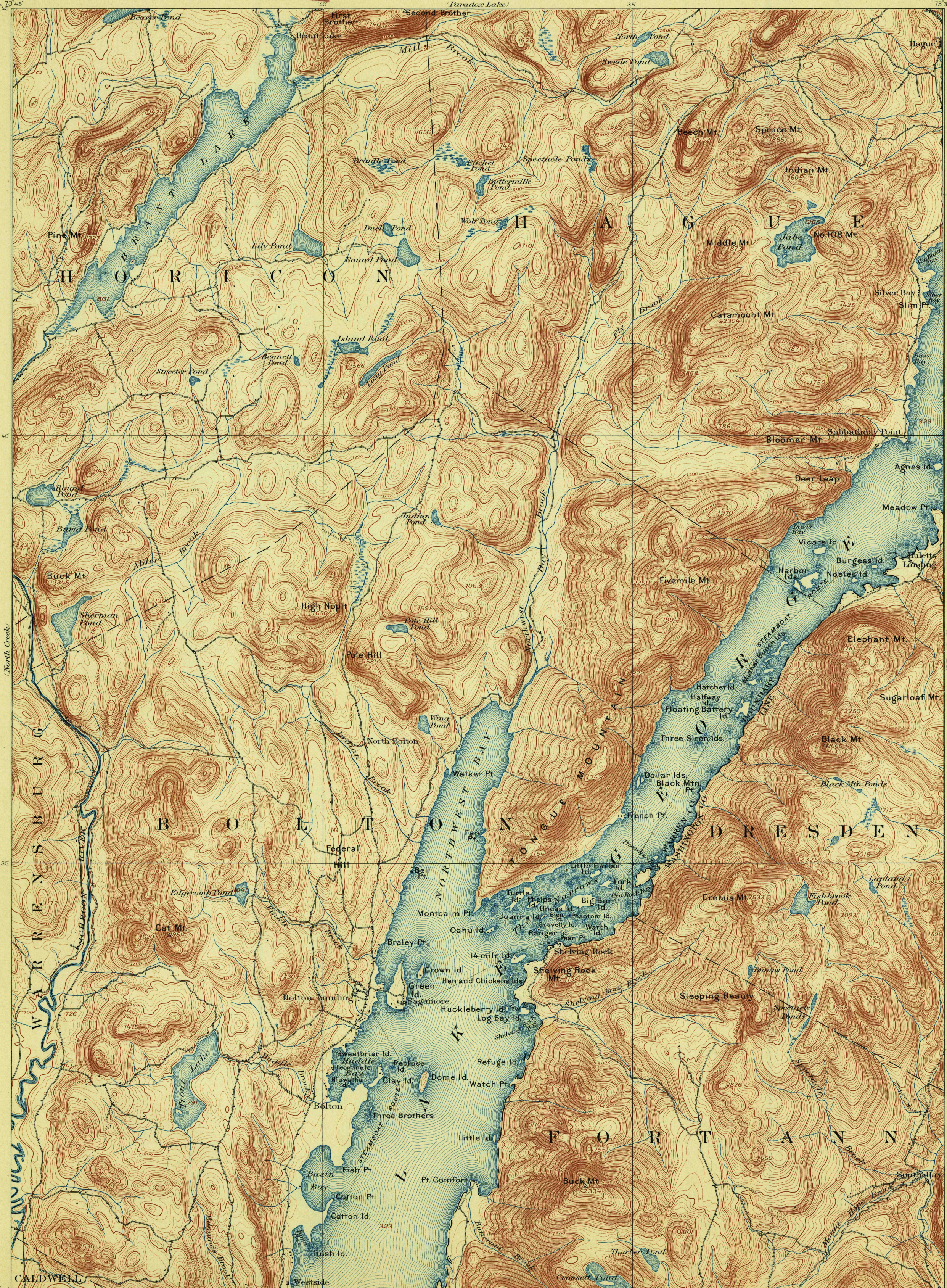


U. S. G. S.
FILE COPY
Ed. Div. Topographic Maps.

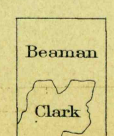
TOPOGRAPHIC SHEET

NEW YORK
BOLTON QUADRANGLE

U.S. GEOLOGICAL SURVEY,
CHARLES D. WALCOTT, DIRECTOR.



Henry Gannett, Chief Topographer,
H.M. Wilson, Chief Geographer in charge.
Control by U.S.C. and G.S. and R.H. Chapman.
Topography by E.B. Clark and W.M. Beaman.
Surveyed in 1894-95 in cooperation
with the State of New York.



U. S. G. S.
FILE COPY
Ed. Div. Topographic Maps.



U.S. Geological Survey,
SEP 15 1902 2085
Ed. Div. Topographic Maps.

Bolton N.Y.