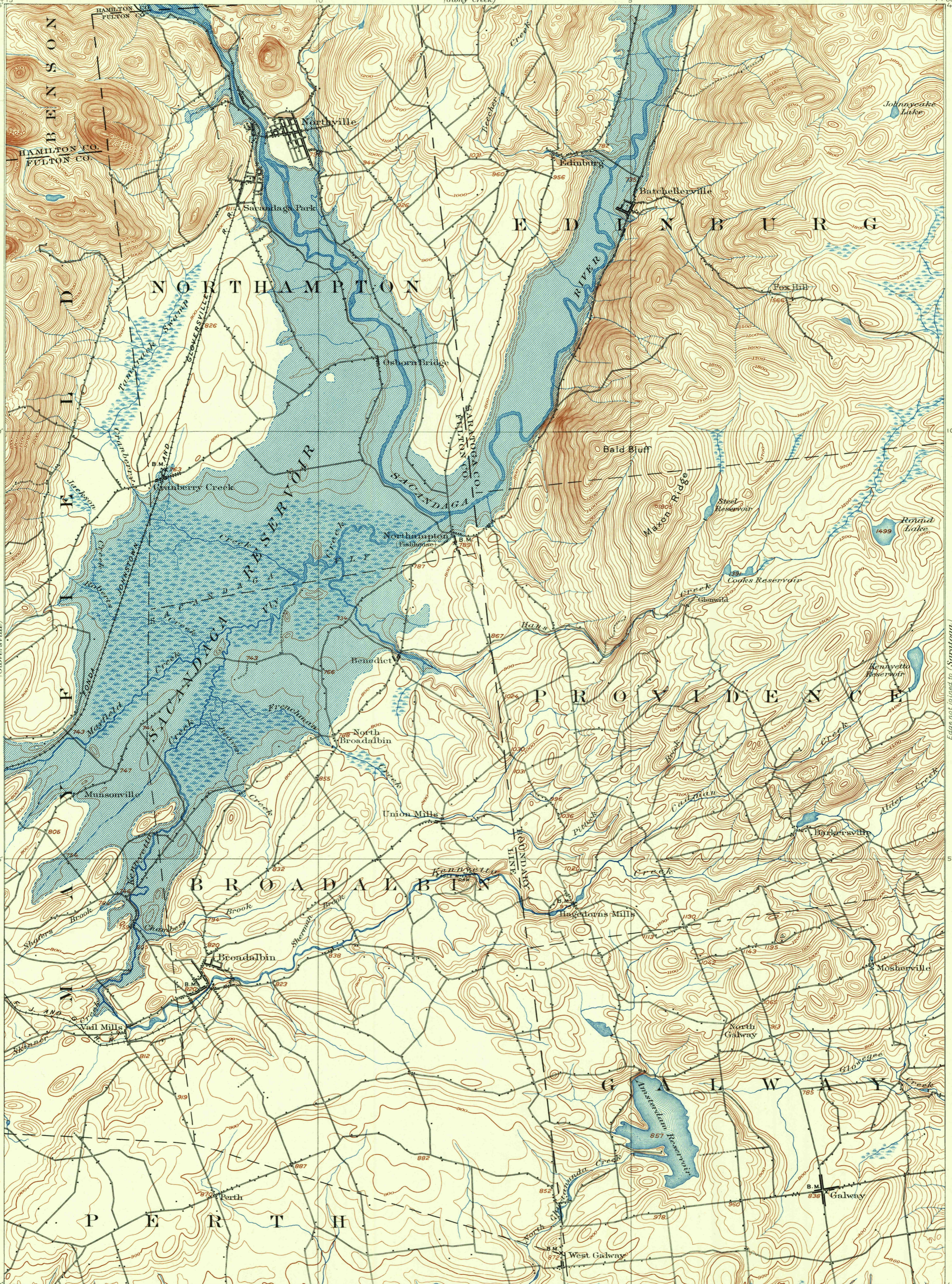
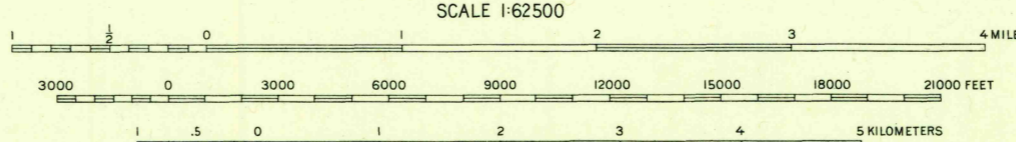
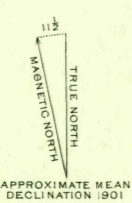


U.S.G.S.
FILE COPY
TOPOGRAPHIC DIVISION



H.M. Wilson, Geographer in charge.
Triangulation by N.Y. State Survey.
Topography by W.H. Lovell.
Surveyed in 1899 in cooperation with
the State of New York.
Partly within Adirondack Park



CONTOUR INTERVAL 20 FEET
DATUM IS MEAN SEA LEVEL

FOR SALE BY U. S. GEOLOGICAL SURVEY, WASHINGTON 25, D. C.
A FOLDER DESCRIBING TOPOGRAPHIC MAPS AND SYMBOLS IS AVAILABLE ON REQUEST

INTERIOR - GEOLOGICAL SURVEY, WASHINGTON, D.C. 1954
Polyconic projection. To place on 1927 North American datum
move projection lines 40 feet north

U.S.G.S.
Historical File
Topographic Division

BROADALBIN, N.Y.
N4300-W7400/15

1899

FEB 9 1955

6245