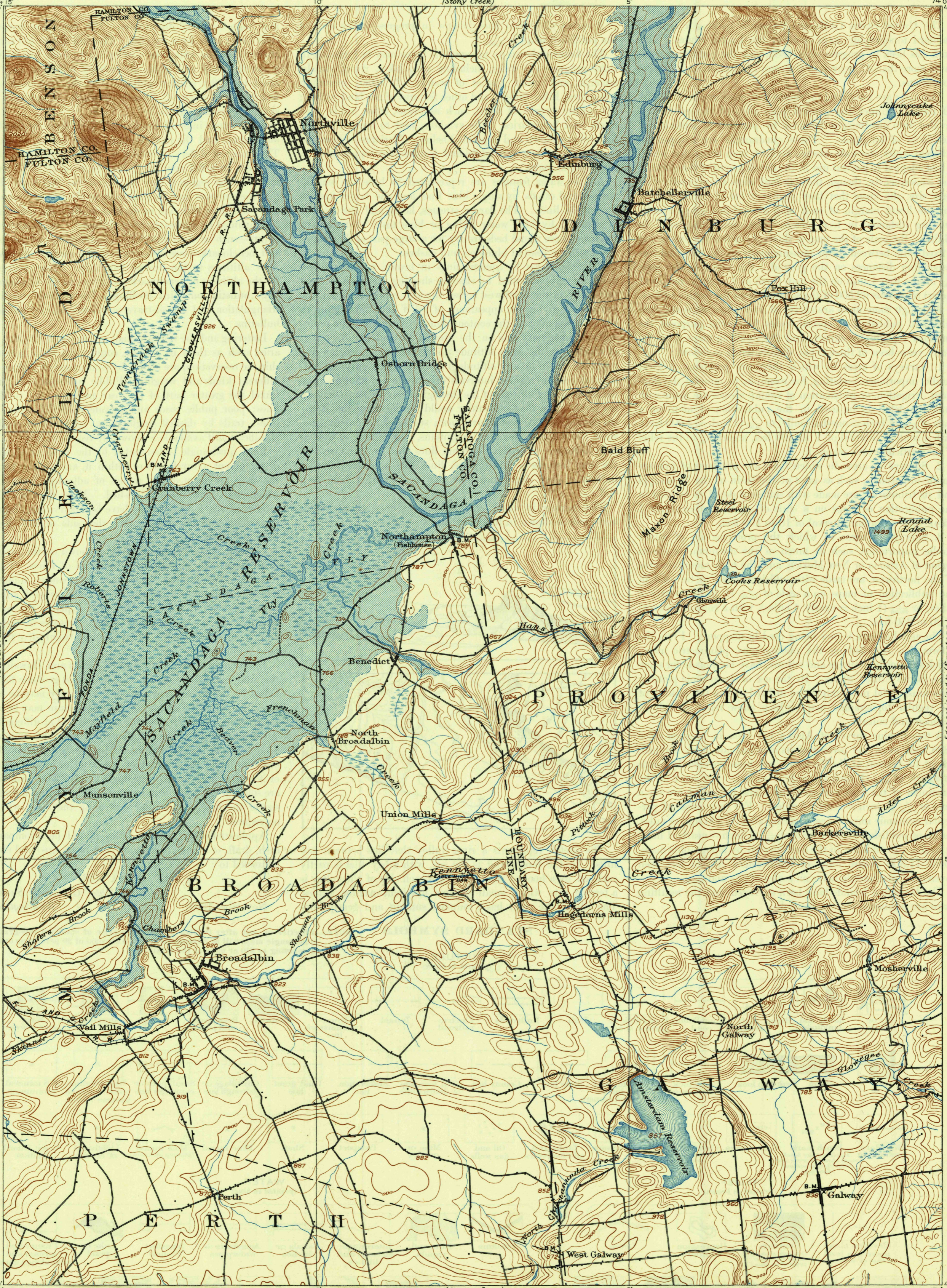
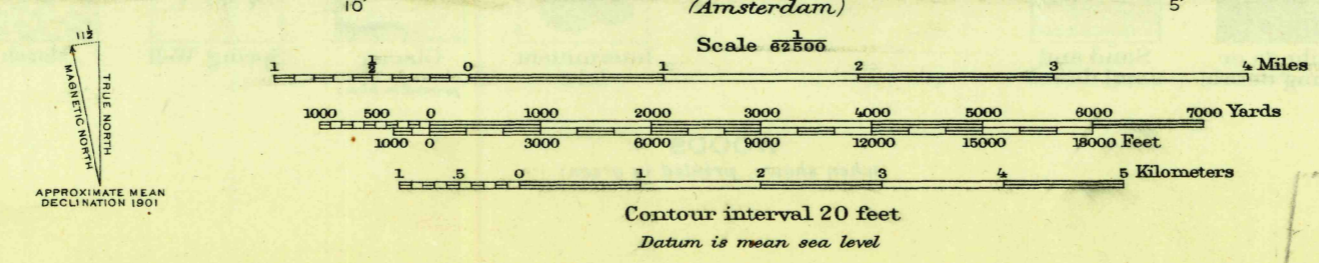


U.S.G.S.
FILE COPY
Illustrations and Editing.



H.M. Wilson, Geographer in charge.
Triangulation by N.Y. State Survey.
Topography by W.H. Lovell.
Surveyed in 1899 in cooperation with
the State of New York.
Partly within Adirondack Park



Edition of July 1902, reprinted 1947
Polyconic projection, North American datum

USGS
Historical File
Topographic Division
U.S.G.S.
FILE COPY
Illustrations and Editing.

BROADALBIN, N.Y.
N4300-W7400/15

JAN 14 1947

5435