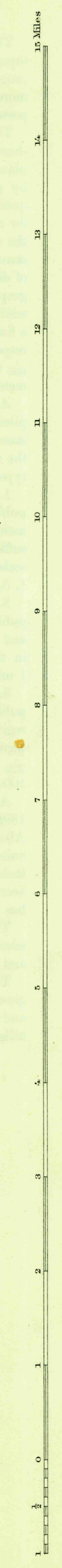
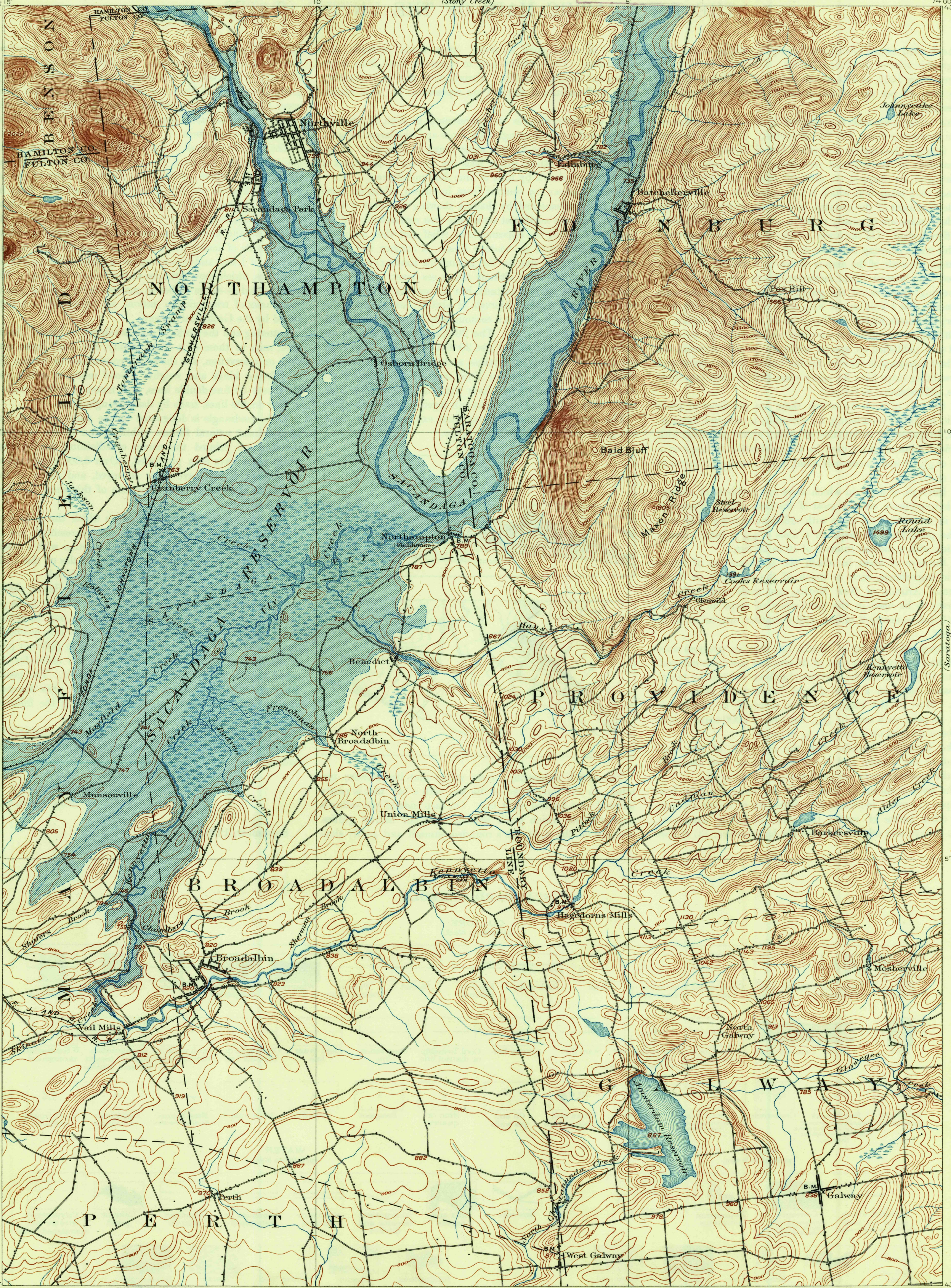
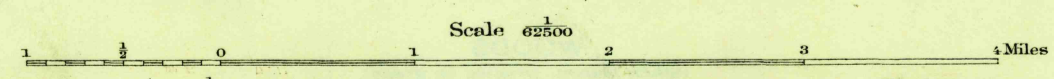
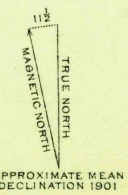


U. S. G. S.
FILE COPY
Inspection and Editing.



ENGRAVED MAY 1902 BY U.S.G.S.
H.M. Wilson, Geographer in charge.
Triangulation by N.Y. State Survey.
Topography by W.H. Lovell.
Surveyed in 1899 in cooperation with
the State of New York.



Scale 62500
Contour interval 20 feet.
Datum is mean sea level.

Edition of July 1902, reprinted 1933
Polyconic projection, North American datum

USGS
Historical File
U. S. G. S.
FILE COPY
Inspection and Editing.

BROADALBIN, N.Y.

SEP 17 1933

2930