

TOPOGRAPHY

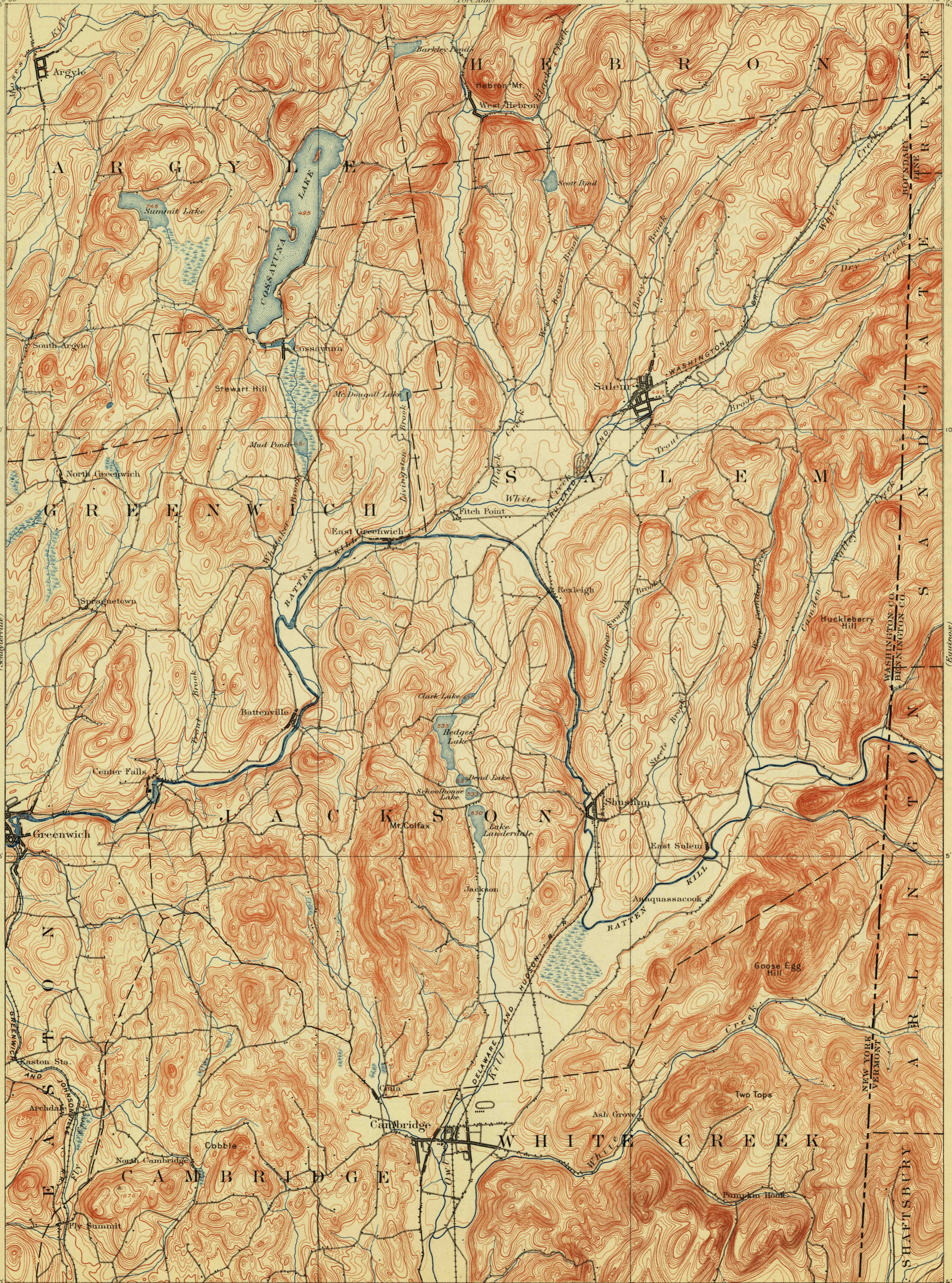
STATE OF NEW YORK
REPRESENTED BY THE
STATE ENGINEER AND SURVEYOR
(Fort Ann)

NEW YORK-VERMONT
CAMBRIDGE QUADRANGLE

U.S. GEOLOGICAL SURVEY
GEORGE OTIS SMITH, DIRECTOR

(Claus Falls)
73° 30'
43° 15'

(Pawlet)
73° 15'
43° 15'



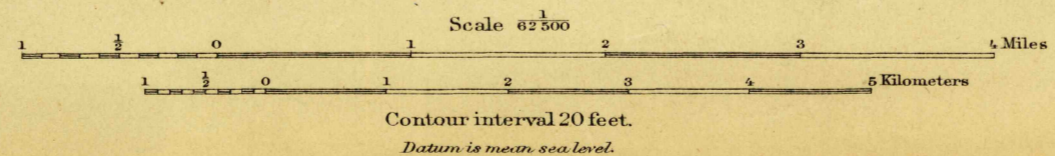
U.S.G.S.
FILE COPY
Ed. Div. Topographic Maps.

U.S.G.S.
FILE COPY
Ed. Div. Topographic Maps.

U.S.G.S.
FILE COPY
Ed. Div. Topographic Maps.

Henry Gannett, Chief Topographer.
H.M. Wilson, Geographer in charge.
Triangulation by S.S. Gannett.
Topography by E.B. Clark, G.E. Hyde and J.W. Thom.
Surveyed in 1892-93 in cooperation with the state of N.Y.
Campbell W. Adams State Engineer and Surveyor.

Hyde
Thom
Clark



Edition of Oct. 1901, reprinted Dec. 1913.

USGS
Historical File
Topographic Division

JAN 31 1914 3563

CAMBRIDGE, N. Y.

(Cohoes)

(Bennington)