

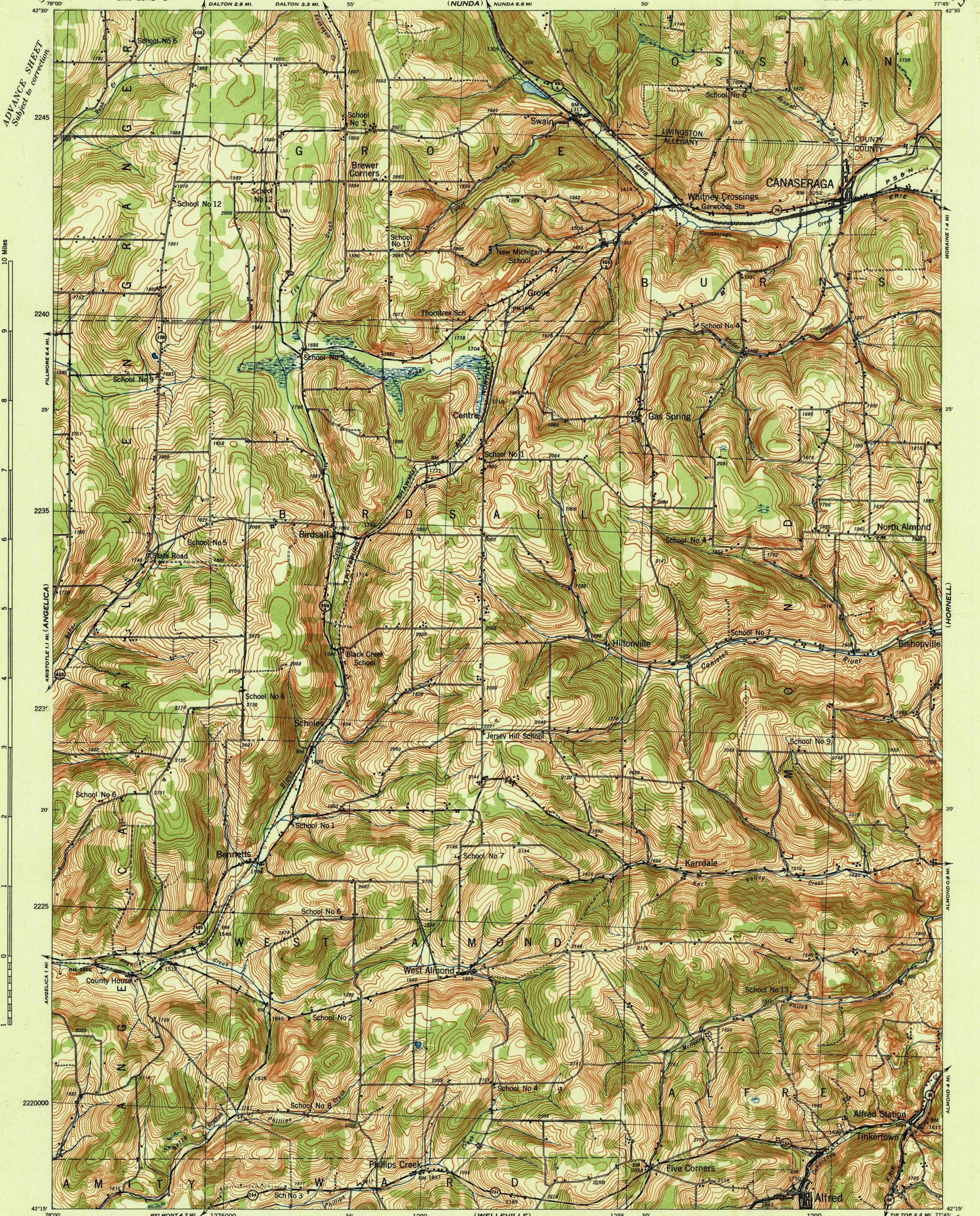
NEW YORK
CANASERAGA QUADRANGLE
GRID ZONE "B"

WAR DEPARTMENT
CORPS OF ENGINEERS, U. S. ARMY

NEW YORK
CANASERAGA QUADRANGLE
GRID ZONE "B"

(PORTAGE)
ADVANCE SHEET
Subject to correction

(WAY LAND)
MORAINES 1.4 MI.



10 Miles
9
8
7
6
5
4
3
2
1
ANGELICA 1 MI.
ANGELICA 1 MI.
ANGELICA 1 MI.

MORAINES 1.4 MI.
ALMOND 0.8 MI.
ALMOND 4 MI.
ALMOND 4 MI.

Work Projects Administration, O. P. 165-2-23-690, Pittsburgh, Pa.
Engineer's Reproduction Plant, direction of Chief of Engineers, U. S. Army.
Surveyed by U. S. Geological Survey, 1913-14.
Planimetric revision from aerial photos, A.A.A. Dept. of Agriculture, 1938
Polyconic Projection, North American Datum.
ENGINEER'S REPRODUCTION PLANT, U. S. ARMY, THE ARMY WAR COLLEGE, WASHINGTON, D. C. 15405-1943

ROAD CLASSIFICATIONS

Main Highways	Graded earth, gravel and stone	U. S. Route
Brick, concrete, macadam and other hard surfaces	Unimproved	State Route

APPROX. MEAN DECLINATION 1941
NO ANNUAL MAGNETIC CHANGE

Scale 1:62500
1000 500 0 1000 2000 3000 4000 5000 Yards

CONTOUR INTERVAL 20 FEET—DATUM IS MEAN SEA LEVEL

NOTE: OFFICERS USING THIS MAP WILL MAKE NECESSARY CORRECTIONS AND ADJUSTMENTS WHILE ON TOUR TO THEIR ATTENTION AND MAIL DIRECT TO "THE CHIEF OF ENGINEERS, WASHINGTON, D. C."

GRID TABLES, U. S. C. & G. S. SPECIAL PUBLICATION NO. 59
THE LAST THREE DIGITS OF THE GRID NUMBERS ARE OMITTED

ROAD DATA REVISED TO 1940
CANASERAGA, N. Y.
N4215-W7745/15

(BELMONT)

(GREEN WOOD)