

(RED MILLS)

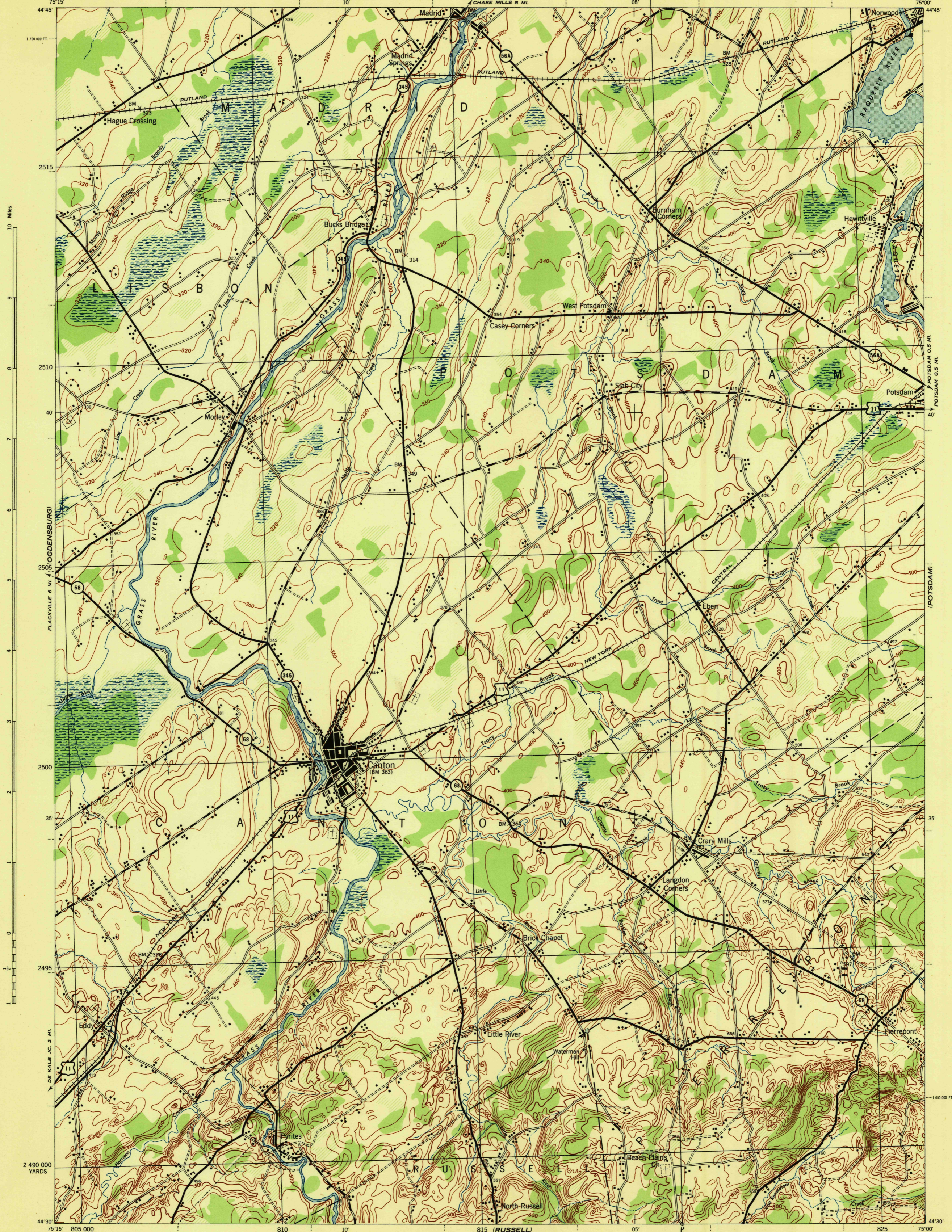
NEW YORK 1:62,500
ST. LAWRENCE CO.

WAR DEPARTMENT
CORPS OF ENGINEERS, U. S. ARMY

FIRST EDITION-AMS 1

CANTON QUADRANGLE
15 MINUTE SERIES

(MASSENA)



10 Miles

9

8

7

6

5

4

3

2

1

0

1

2

3

4

5

6

7

8

9

10

11

12

13

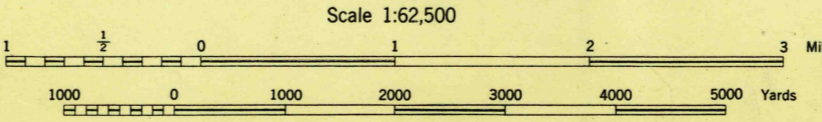
14

First Edition (AMS 1), 1944.

Prepared under the direction of the Chief of Engineers, U. S. Army, by the Army Map Service (QU), U. S. Army, Washington, D. C., 1944.
 Based on U. S. G. S. Quadrangle, Canton, 1:62,500 (1911).
 Control by U. S. Geological Survey.
 Surveyed in cooperation with the State of New York, 1910.
 Revised from controlled mosaic by Lake Survey, Detroit, Mich.
 Aerial photography by the U. S. Army Air Force, 1941.
 Polyconic Projection, North American Datum.

ROAD CLASSIFICATION 1943

Dependable hard surface, heavy-duty road.	Loose surface graded, dry weather road.	U. S. Route
Secondary hard surface, all-weather road.	Dirt road.	State Route
More than two lanes indicated by note along road with tick at point of change.		3 LANE 4 LANE



Scale 1:62,500

CONTOUR INTERVAL 20 FEET
DATUM IS MEAN SEA LEVEL

FIVE THOUSAND YARD GRID COMPUTED FROM GRID SYSTEM FOR PROGRESSIVE MAPS IN THE U. S. 'ZONE A' U. S. G. S. SPECIAL PUBLICATION NO. 59
 THE LAST THREE DIGITS OF THE GRID NUMBERS ARE OMITTED
 NEW YORK STATE GRID ZONE EAST IS INDICATED BY DOTTED TICKS OUTSIDE THE NEAT LINE AT 10,000 FOOT INTERVALS

NOTE: OFFICERS USING THIS MAP WILL MAKE HEIGHT CORRECTIONS AND ADDITIONS WHICH COME TO THEIR ATTENTION AND MAIL THESE TO THE CHIEF OF ENGINEERS, WASHINGTON, D. C.

HISTORICAL FILES
 (DO NOT REMOVE)

LEGEND
 BRUSH

CANTON, N. Y.
 N4430-W7500/15

FILE COPY