

GREENVILLE (JUNC. N.Y. 81) 13 MI.
CAIRO 4 MI.

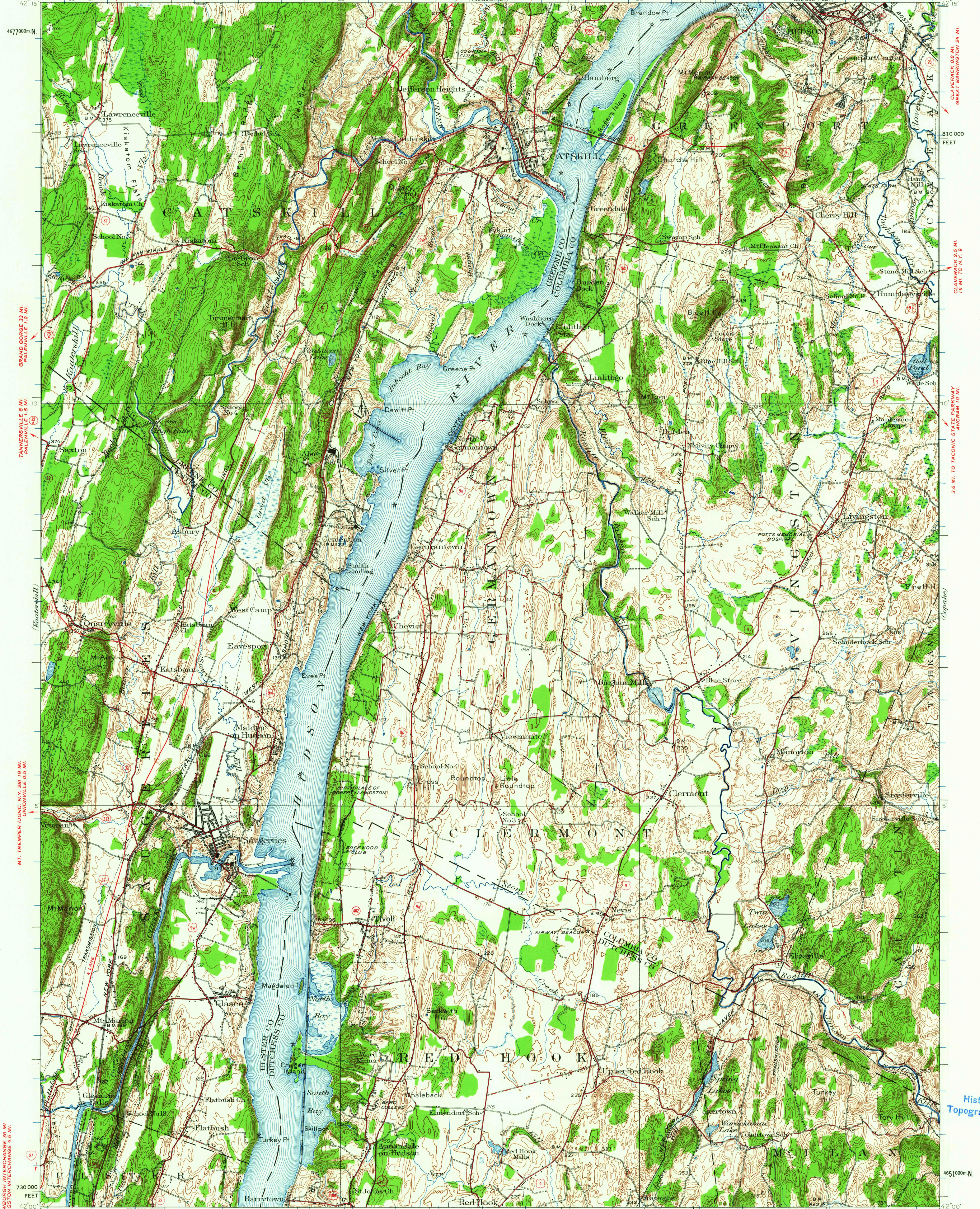
ALBANY INTERCHANGE 36 MI.
26 MI. TO INTERSTATE 90

ALBANY 33 MI.
COLUMBIAVILLE 4.9 MI.

UNITED STATES
DEPARTMENT OF THE INTERIOR
GEOLOGICAL SURVEY

STATE OF NEW YORK
REPRESENTED BY THE
DEPARTMENT OF PUBLIC WORKS

NEW YORK
CATSKILL QUADRANGLE



GRAND GORGE 33 MI.
PALENVILLE 1.3 MI.

TANNERSVILLE 8 MI.
PALENVILLE 1.5 MI.

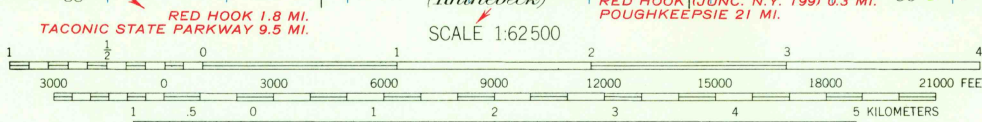
MT. TREMPER (JUNC. N.Y. 28) 19 MI.
UNIONVILLE 0.5 MI.

NEWBURGH INTERCHANGE 36 MI.
KINGSTON INTERCHANGE 4.6 MI.

KINGSTON 5.5 MI.
NEWBURGH 37 MI.

Topography by Hersey Munroe, A.J. Ogle, H.A. Bean, Olinus Smith, H.B. Smith, J.K. Bailey, and B.P. Taylor. Culture and drainage in part compiled from aerial photographs taken by Air Corps, U.S. Army Surveyed in 1933 and 1934.

APPROXIMATE MEAN DECLINATION, 1934



CONTOUR INTERVAL 20 FEET
DATUM IS MEAN SEA LEVEL

ROAD CLASSIFICATION
Heavy duty ——— Light duty ———
Medium duty ——— Unimproved dirt ———
Interstate Route U.S. Route State Route

Polyconic projection, 1927 North American datum
10,000-foot grid based on New York (East)
rectangular coordinate system
1000-meter Universal Transverse Mercator grid ticks,
zone 18, shown in blue

CATSKILL, N. Y.
N 4200 - W 7345 / 15
U.S.G.A.
1934

USGS
Historical File
Topographic Division

APR 5 1965
12, 160

FOR SALE BY U. S. GEOLOGICAL SURVEY, WASHINGTON 25, D. C. 20242
A FOLDER DESCRIBING TOPOGRAPHIC MAPS AND SYMBOLS IS AVAILABLE ON REQUEST

FILE COPY
TOPOGRAPHIC DIVISION