

UNITED STATES  
DEPARTMENT OF THE INTERIOR  
GEOLOGICAL SURVEY

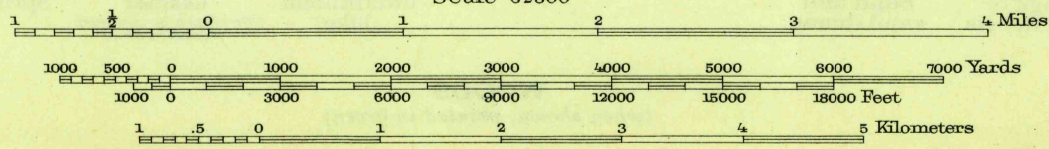
STATE OF NEW YORK  
REPRESENTED BY THE  
DEPARTMENT OF PUBLIC WORKS  
(Eden)

U. S. G. S.  
FILE COPY  
Inspection and Editing.

NEW YORK  
CATTARAUGUS QUADRANGLE



Topography by H.H. Hodgeson, E.B. Hill, E.V. Holloway,  
and R.J. Belton.  
Surveyed in 1921.



Contour interval 20 feet  
Datum is mean sea level

ROUTES USUALLY TRAVELED  
HARD IMPERVIOUS SURFACES  
OTHER SURFACE IMPROVEMENTS  
U. S. ROUTE 1945 STATE ROUTE

Polyconic projection, North American datum.  
5000 yard grid based upon U.S. zone system, B.  
LITTLE VALLEY 2.7 MI.  
RANDOLPH 14.5 MI.

CATTARAUGUS, N.Y.  
Edition of 1923  
reprinted 1945  
N4215-W7845/15

USGS  
Historical File  
Topographic Division

U. S. G. S.  
FILE COPY  
Inspection and Editing.