

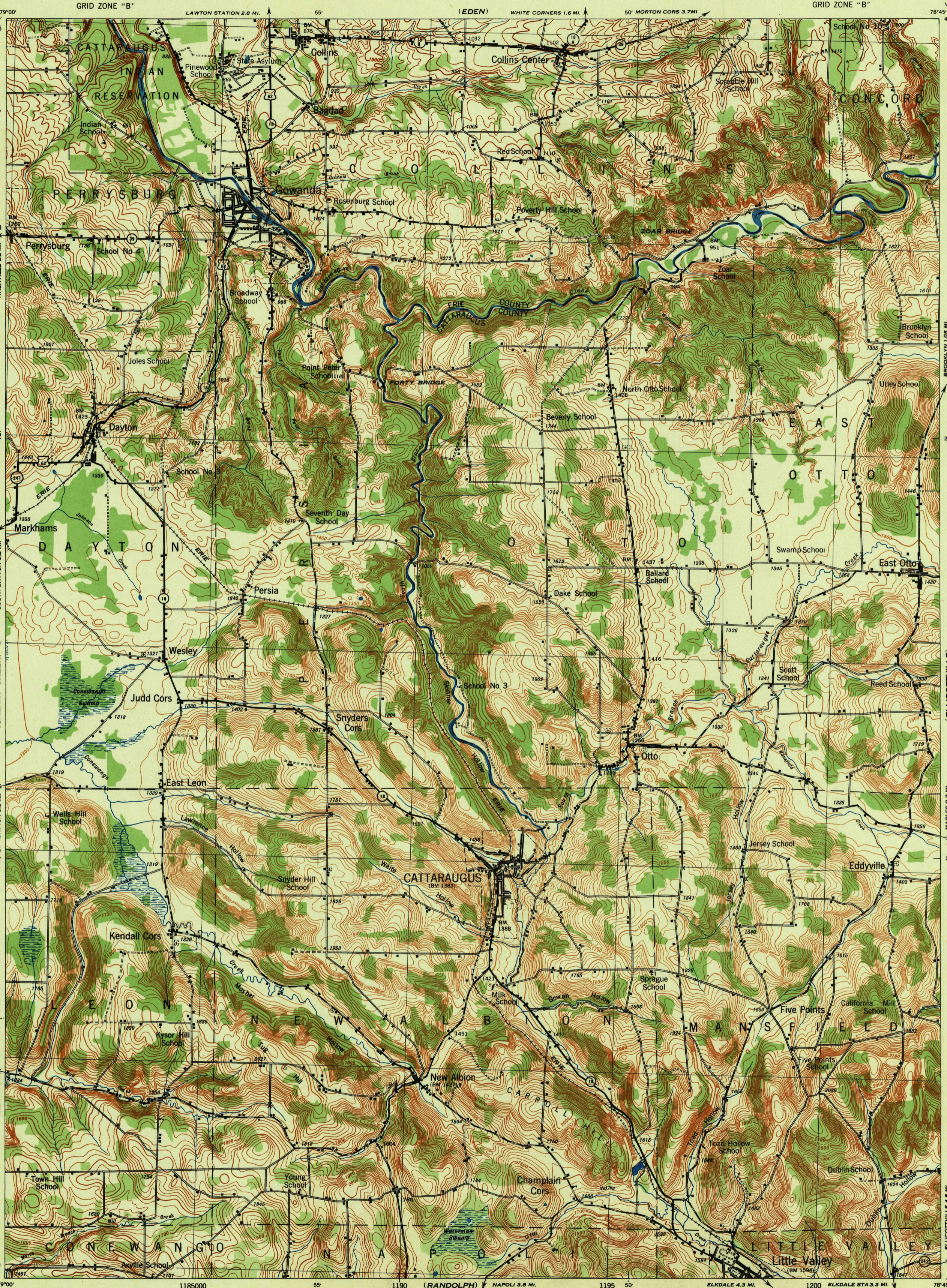
NEW YORK
CATTARAUGUS QUADRANGLE
GRID ZONE "B"

WAR DEPARTMENT
CORPS OF ENGINEERS, U. S. ARMY

NEW YORK
CATTARAUGUS QUADRANGLE
GRID ZONE "B"

(SILVER CREEK)
ADVANCE SHEET
Subject to correction
10 Miles
NASHVILLE 3.8 MI.
SOUTH DAYTON 8.2 MI.
SOUTH DAYTON 3.3 MI.
LEON 0.8 MI.
JAMES TOWN

(SPRING VILLE)
BROOKLYN 1.08 MI.
ELICOTTVILLE
MAPLES 0.7 MI.
ELICOTTVILLE 4.8 MI.
(SALA-MANCA)



NEW YORK
CATTARAUGUS QUADRANGLE
GRID ZONE "B"

WAR DEPARTMENT
CORPS OF ENGINEERS, U. S. ARMY

NEW YORK
CATTARAUGUS QUADRANGLE
GRID ZONE "B"

Work Projects Administration, O. P. 165-2-23-690, Pittsburgh, Pa.
Engineer Reproduction Plant, direction of Chief of Engineers, U. S. Army.
Surveyed by U. S. Geological Survey, 1921.
Planimetric revision from aerial photos, A.A.A. Dept. of Agriculture 1938.
Polyconic Projection, North American Datum.
ENGINEER REPRODUCTION PLANT, U. S. ARMY, THE ARMY WAR COLLEGE, WASHINGTON, D. C. 1940-1941

ROAD CLASSIFICATIONS
Main Highways, Graded earth, gravel and stone, U. S. Route
Brick, concrete, macadam and other hard surfaces, Unimproved, State Route

Scale 1:62500
1000 500 0 1000 2000 3000 4000 5000 Yards
CONTOUR INTERVAL 20 FEET—DATUM IS MEAN SEA LEVEL
NOTE: OFFICERS USING THIS MAP WILL MARK BEHIND CORRECTIONS AND ADDITIONS WHICH COME TO THEIR ATTENTION AND SHALL DIRECT TO "THE CHIEF OF ENGINEERS, WASHINGTON, D. C."

Scale 1:62500
1000 500 0 1000 2000 3000 4000 5000 Yards
CONTOUR INTERVAL 20 FEET—DATUM IS MEAN SEA LEVEL
NOTE: OFFICERS USING THIS MAP WILL MARK BEHIND CORRECTIONS AND ADDITIONS WHICH COME TO THEIR ATTENTION AND SHALL DIRECT TO "THE CHIEF OF ENGINEERS, WASHINGTON, D. C."

CATTARAUGUS, N. Y.
N4215-W7845/15

USCS
Historical File
Topographic Division