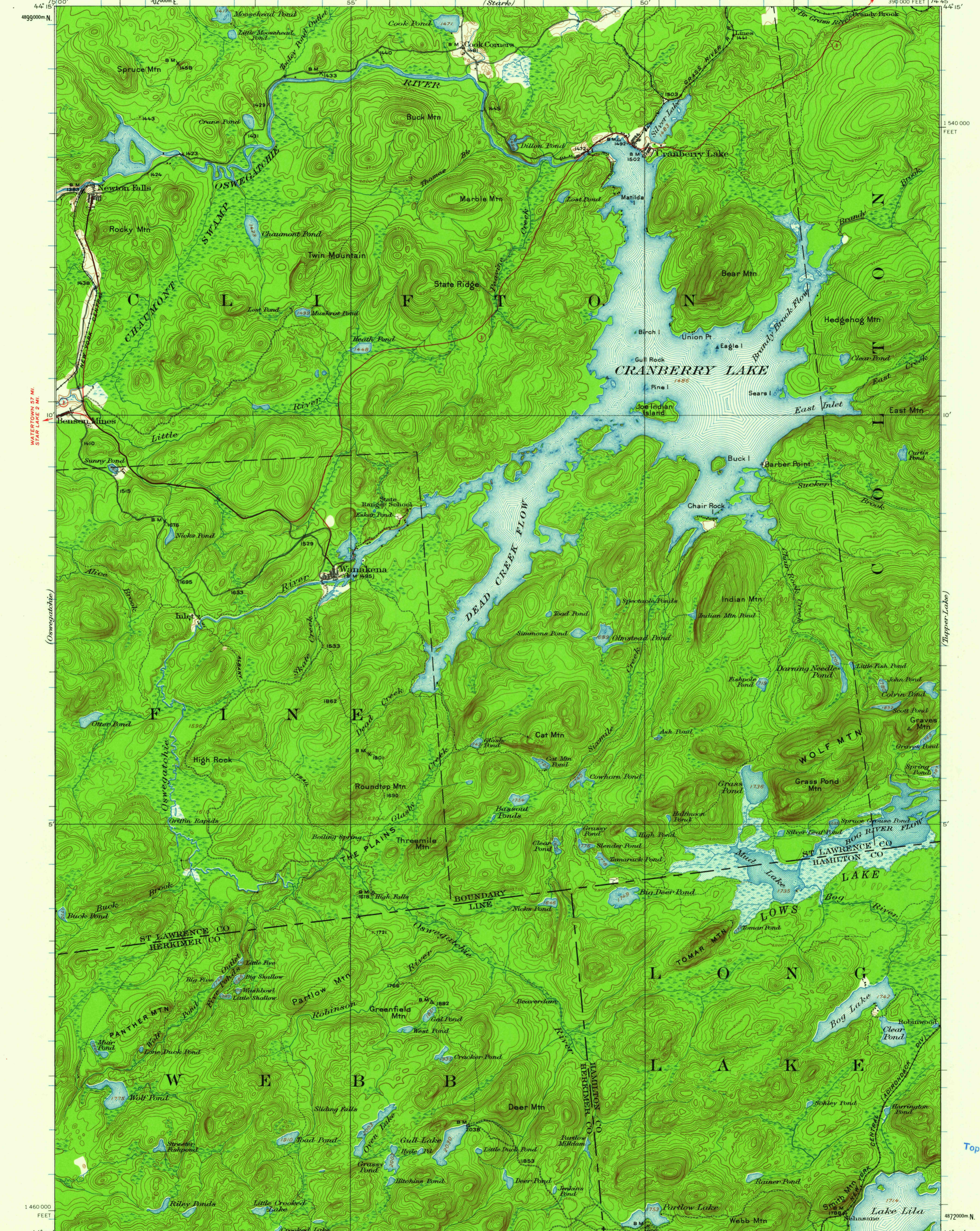


SARANAC LAKE 53 MI.  
SEVEY LUNC. N.Y. 561 3.8 MI.



44° 15' 4899000m N  
75° 00' 330000 E  
55° 50' 1540000 FEET

44° 15' 1540000 FEET  
74° 45' 10'

WATERBURY 25 MI.  
STAR LAKE 2 MI.

(Oswegatchie)

(Upper Lake)

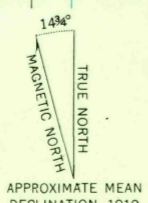
44° 00' 1460000 FEET  
75° 00' 330000 E

74° 45' 10'

44° 00' 1460000 FEET  
75° 00' 330000 E

4872000m N  
74° 45' 10'

C.H. Birdseye, Chief Topographic Engineer.  
Frank Sutton, Geographer in charge.  
Topography by J.M. Whitman, A.B. Searle, A.P. Meade,  
C.H. Davey, and G.H. Guerdum.  
Control by C.B. Kendall, W.T. Griswold, S.S. Gannett,  
F.L. Shalibo, and K.E. Schlachter.  
Surveyed in 1916 and 1919.  
Entire area within Adirondack State Park



CONTOUR INTERVAL 20 FEET  
DATUM IS MEAN SEA LEVEL

ROAD CLASSIFICATION  
Heavy-duty ——— Light-duty ———  
Medium-duty - - - - - Unimproved dirt - - - - -  
○ Slate Route

Polyconic projection. 1927 North American datum  
10,000-foot grid based on New York (East)  
rectangular coordinate system  
1000-meter Universal Transverse Mercator grid ticks,  
zone 18, shown in blue

CRANBERRY LAKE, N. Y.  
N 4400—W 7445 / 15

1919

FOR SALE BY U. S. GEOLOGICAL SURVEY, WASHINGTON 25, D. C.  
A FOLDER DESCRIBING TOPOGRAPHIC MAPS AND SYMBOLS IS AVAILABLE ON REQUEST

USGS  
Historical File  
Topographic Division

6330  
DEC 26 1962