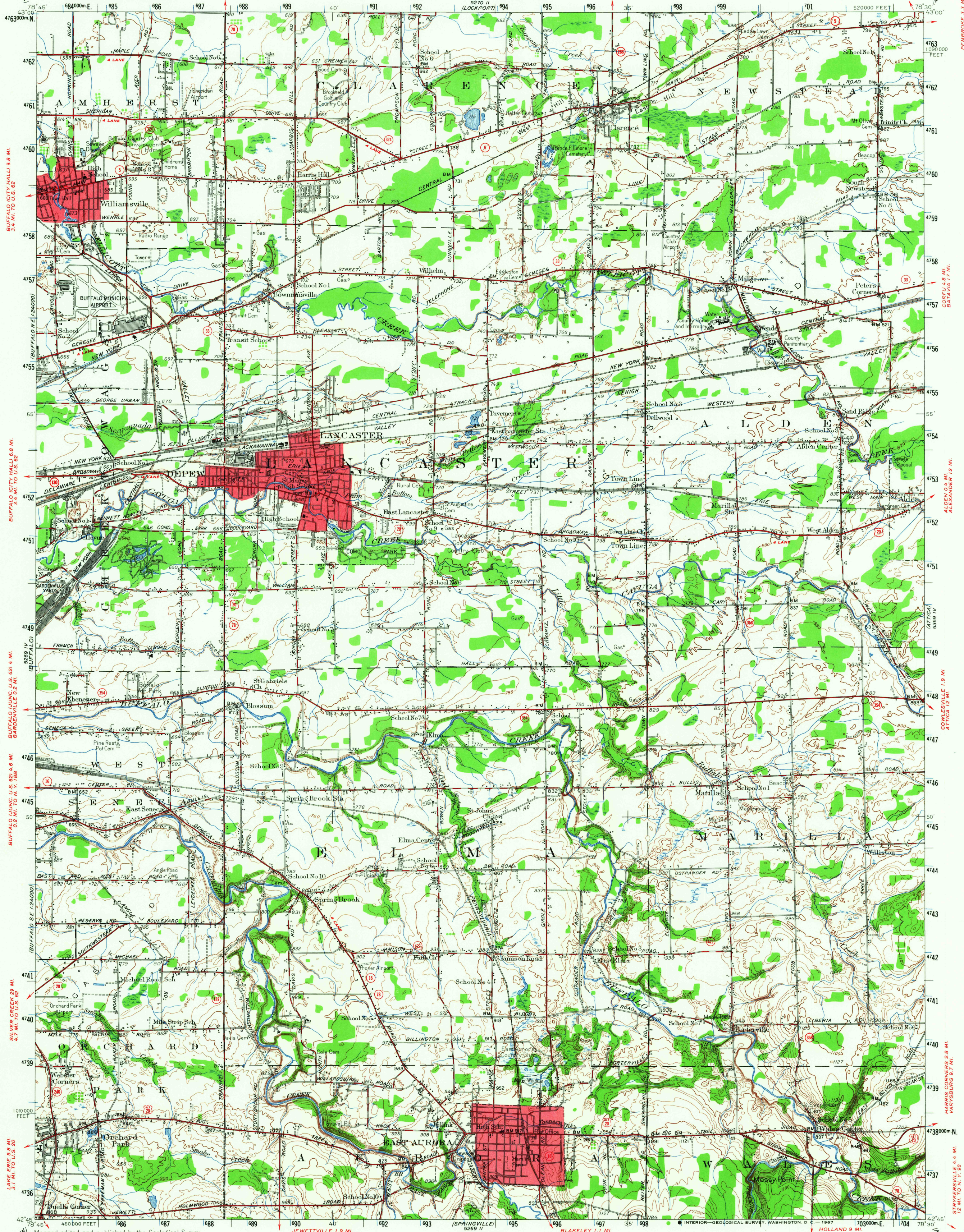


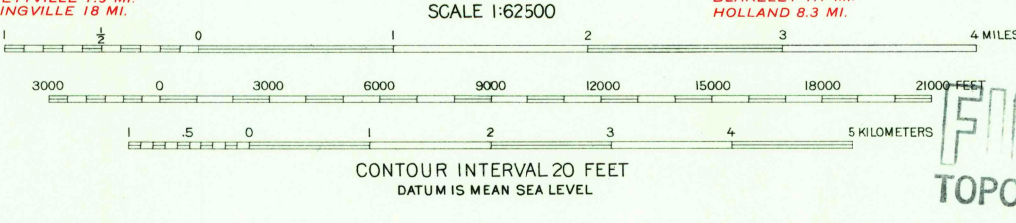
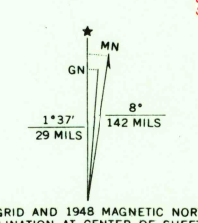
UNITED STATES  
DEPARTMENT OF THE INTERIOR  
GEOLOGICAL SURVEY

STATE OF NEW YORK  
DEPARTMENT OF PUBLIC WORKS  
BERTRAM D. TALLAM, SUPERINTENDENT

DEPEW QUADRANGLE  
NEW YORK-ERIE CO.  
15-MINUTE SERIES (TOPOGRAPHIC)



Maped, edited and published by the Geological Survey  
Control by USGS, USC&GS and USED  
Culture and drainage in part compiled by Corps of Engineers,  
Dept. of the Army, from aerial photographs taken 1942  
Topography by plane-table methods 1948  
Polyconic projection, 1927 North American datum  
10000-foot grid based on New York coordinate system,  
west zone  
Red tint indicates areas in which only  
landmark buildings are shown  
1000-meter Universal Transverse Mercator grid ticks,  
zone 17, shown in blue



U.S.G.S. Heavy-duty  
Medium-duty  
Light-duty  
Unimproved dirt  
U.S. Route  
State Route

THIS MAP COMPLIES WITH NATIONAL MAP ACCURACY STANDARDS  
FOR SALE BY U.S. GEOLOGICAL SURVEY, WASHINGTON, D. C. 20242  
A FOLDER DESCRIBING TOPOGRAPHIC MAPS AND SYMBOLS IS AVAILABLE ON REQUEST

FILE COPY  
TOPOGRAPHIC DIVISION

This area is also covered by 1:24,000  
scale maps of the Clarence, Lancaster,  
Orchard Park and East Aurora  
7.5-minute quadrangles

DEPEW NY  
N4245-W7830/15

1948

AMS 5269 I-SERIES V721

USGS  
Historical File  
Topographic Division

2715  
MAY 2 1967