

TOPOGRAPHY

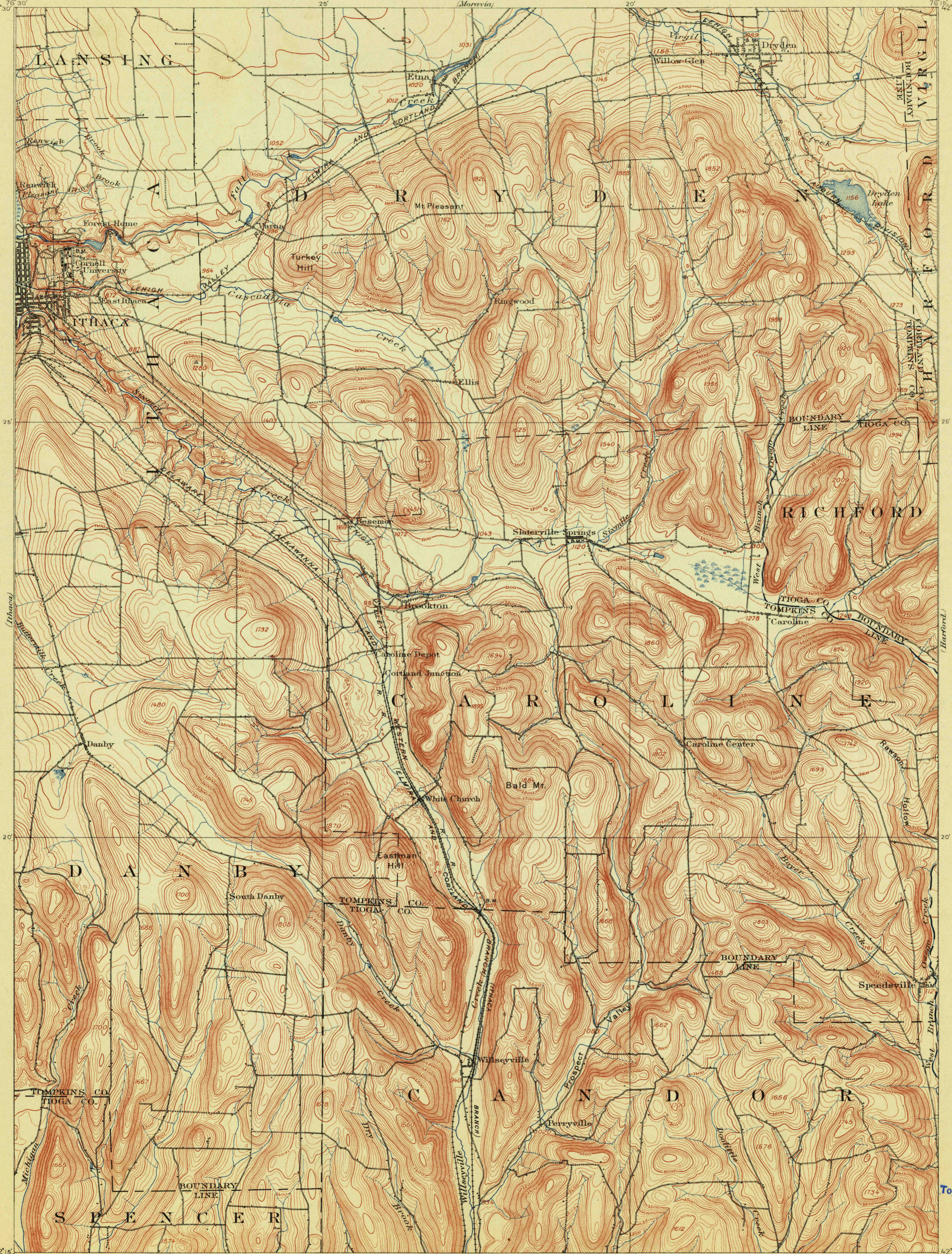
STATE OF NEW YORK
REPRESENTED BY THE
STATE ENGINEER AND SURVEYOR
(Moravia)

NEW YORK
DRYDEN QUADRANGLE

U.S. GEOLOGICAL SURVEY
GEORGE OTIS SMITH, DIRECTOR

(Genesee)
76° 30'
42° 30'

(Cortland)
76° 15'
42° 30'

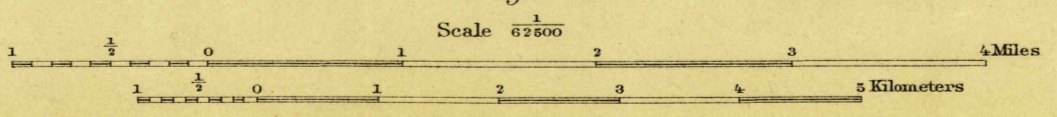


U.S.G.S.
FILE COPY
Ed. Div. Topographic Maps

U.S.G.S.
FILE COPY
Ed. Div. Topographic Maps

USGS
Historical File
Topographic Division

(Warrenton)
42° 15'
76° 30'
H.M. Wilson, Geographer in charge.
Triangulation by N.Y. State Survey
Topography by R.D. Cummin and Nat. G. Van Doren.
Surveyed in 1898 in cooperation with the
State of New York



Contour interval 20 feet.
Datum is mean sea level.

Edition of Oct. 1900, reprinted June 1913.

JUL 3 1913 3568

DRYDEN N.Y.