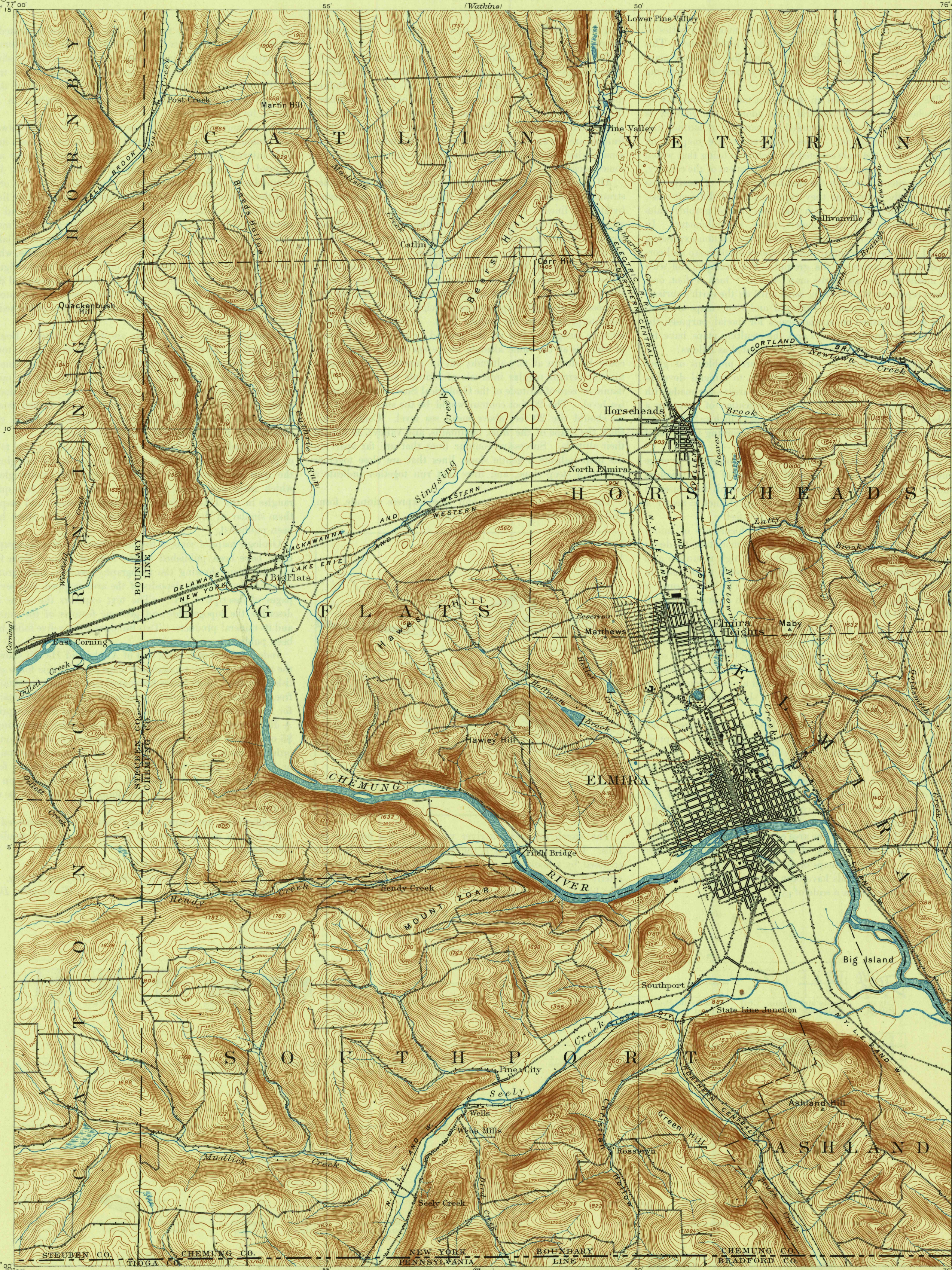


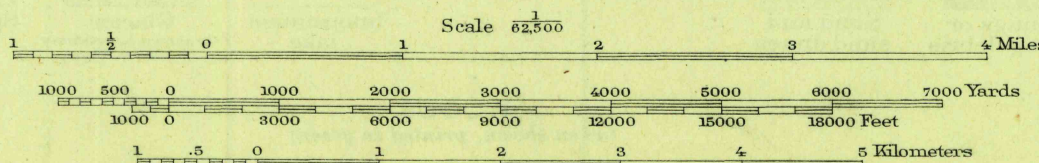
U. S. G. S.  
FILE COPY

Inspection and Editing.



Henry Gannett, Chief Topographer.  
H.M. Wilson, Geographer in charge.  
Triangulation by N.Y. State Survey.  
Topography by R.D. Cummin, Jas. M. McCormick and M.B. Lambert.  
Surveyed in 1893.  
SURVEYED IN COOPERATION WITH THE STATE OF NEW YORK.

M. McCormick  
Lambert  
Cummin



Contour interval 20 feet  
Datum is mean sea level

USGS  
Historical File  
Topographic Division  
Edition of Feb. 1895, reprinted 1944  
Polyconic projection

This area surveyed by reconnaissance methods.  
Maps of adjacent areas surveyed by modern  
methods may not join this sheet exactly.

ELMIRA, N.Y. - PA.  
N4200-W7645/15

U. S. G. S.  
FILE COPY

Inspection and Editing.

JUN 23 1944

5425