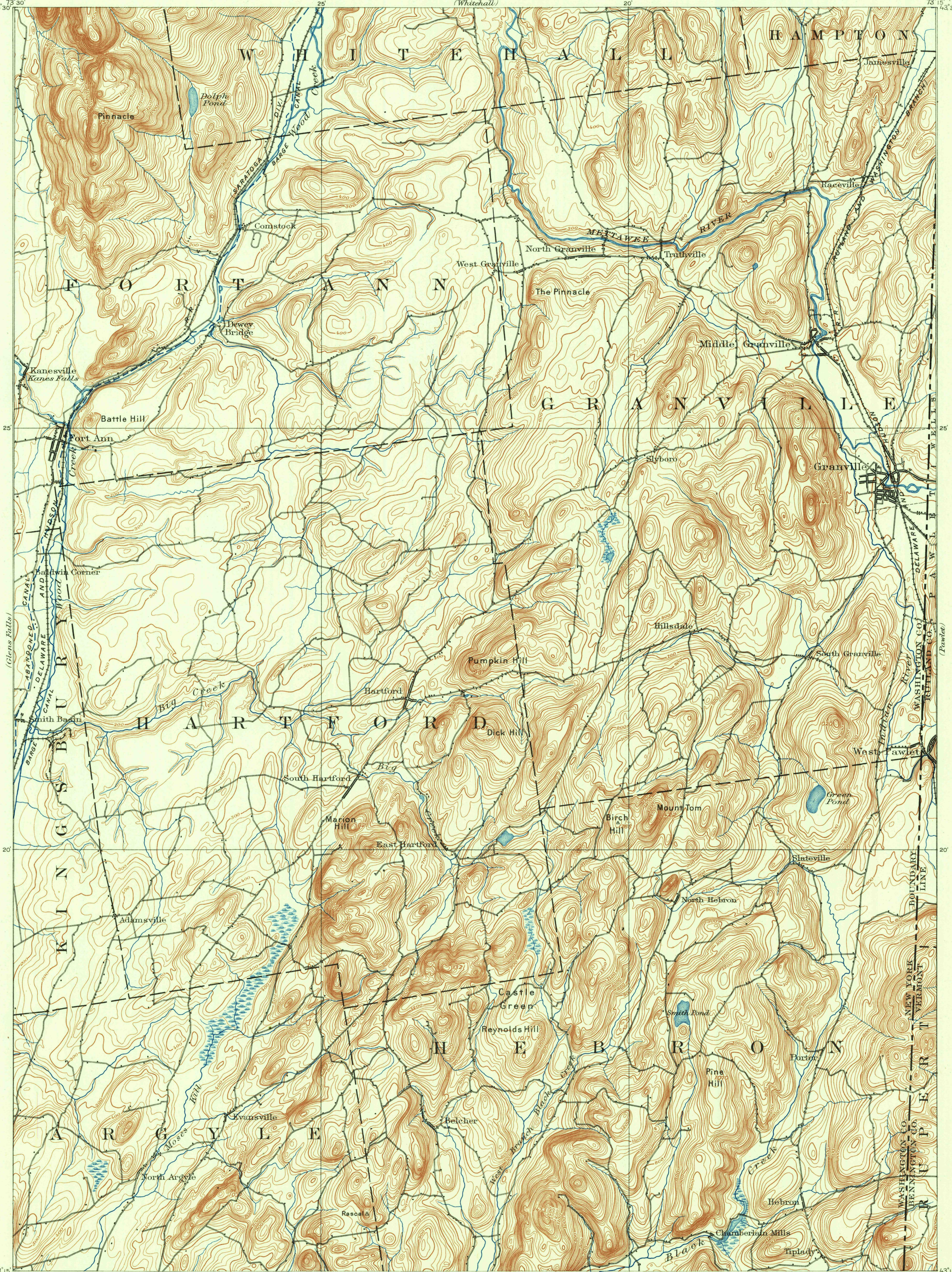
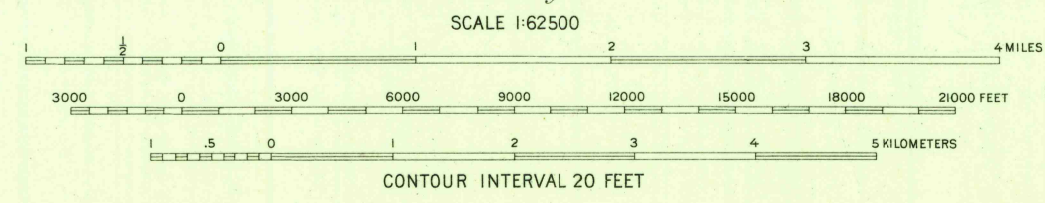
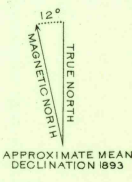


U.S.G.S.  
FILE COPY  
TOPOGRAPHIC DIVISION



Henry Gannett, Chief Topographer.  
H.M. Wilson, Geographer in charge.  
Triangulation by S.S. Gannett.  
Topography by G.E. Hyde.  
Surveyed in 1893 in cooperation with the State of N.Y.



INTERIOR-GEOLOGICAL SURVEY, WASHINGTON, D.C. 1894  
Polyconic projection. 1927 North American datum.  
Surveyed by reconnaissance methods

FOR SALE BY U. S. GEOLOGICAL SURVEY, WASHINGTON 25, D. C.  
A FOLDER DESCRIBING TOPOGRAPHIC MAPS AND SYMBOLS IS AVAILABLE ON REQUEST

N.Y.-VT.  
FORT ANN  
N4-315-W7315/15  
1893

U.S.G.S.  
Historical File  
Topographic Division

U.S.G.S.  
FILE COPY  
TOPOGRAPHIC DIVISION