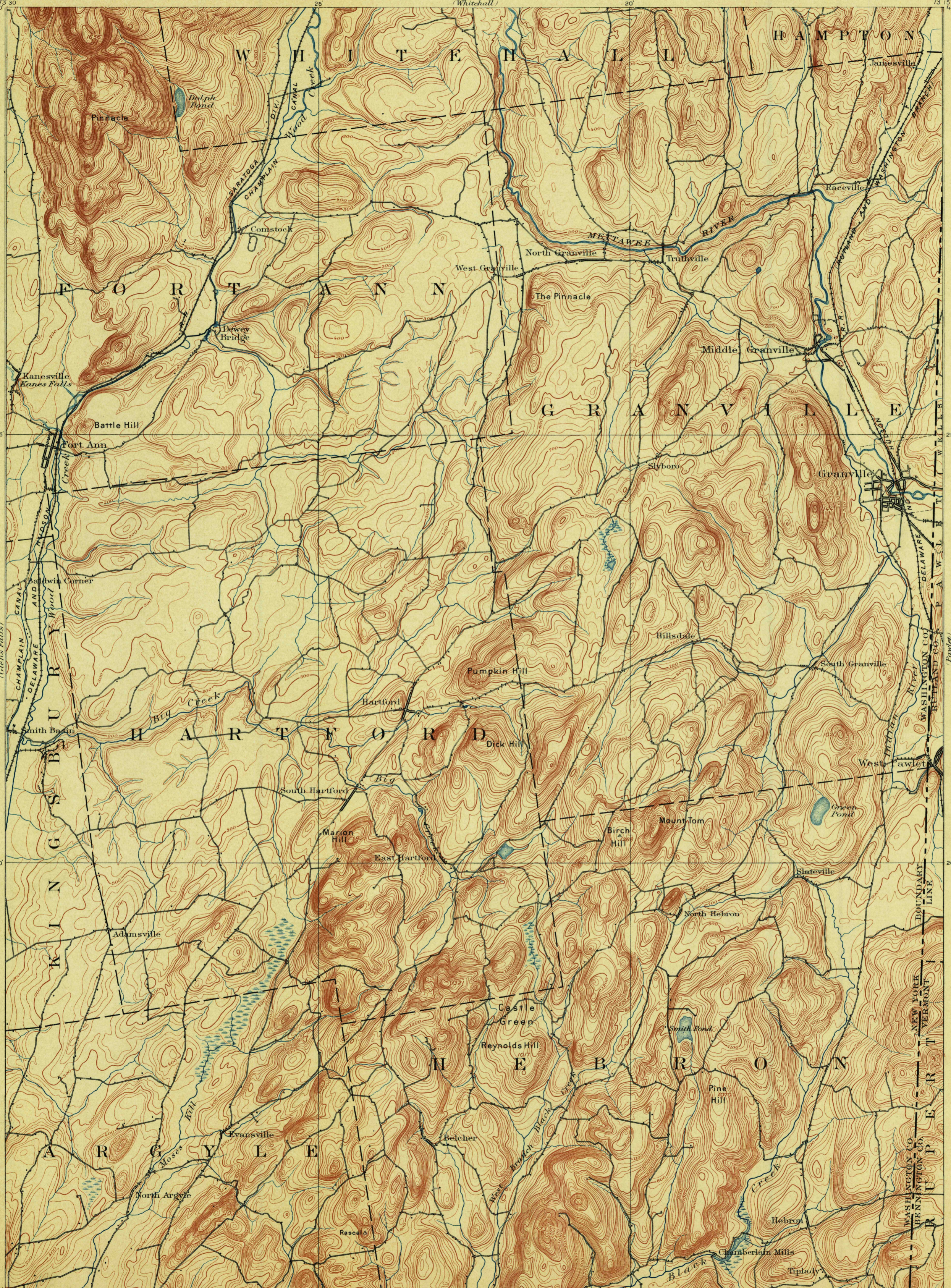


U. S. G. S.
FILE COPY
Ed. Div. Topographic Maps.

U.S. GEOLOGICAL SURVEY.
CHARLES D. WALCOTT, DIRECTOR.

TOPOGRAPHIC SHEET

NEW YORK-VERMONT
FORT ANN QUADRANGLE



ENGRAVED MAR. 1895 BY U.S.G.S.
Henry Gannett, Chief Topographer.
H.M. Wilson, Geographer in charge.
Triangulation by S.S. Gannett.
Topography by G.E. Hyde.
Surveyed in 1893 in cooperation with the State of N.Y.

U. S. G. S.
FILE COPY
Ed. Div. Topographic Maps.

Scale 62,500
Miles
Kilometers
Contour interval 20 feet.
Datum is mean sea level.

U.S. Geological Survey,
FEB 28 1901 2495.
Ed. Div. Topographic Maps.

Fort Ann
N.Y. - VT.

USGS
Historical File
Topographic Division