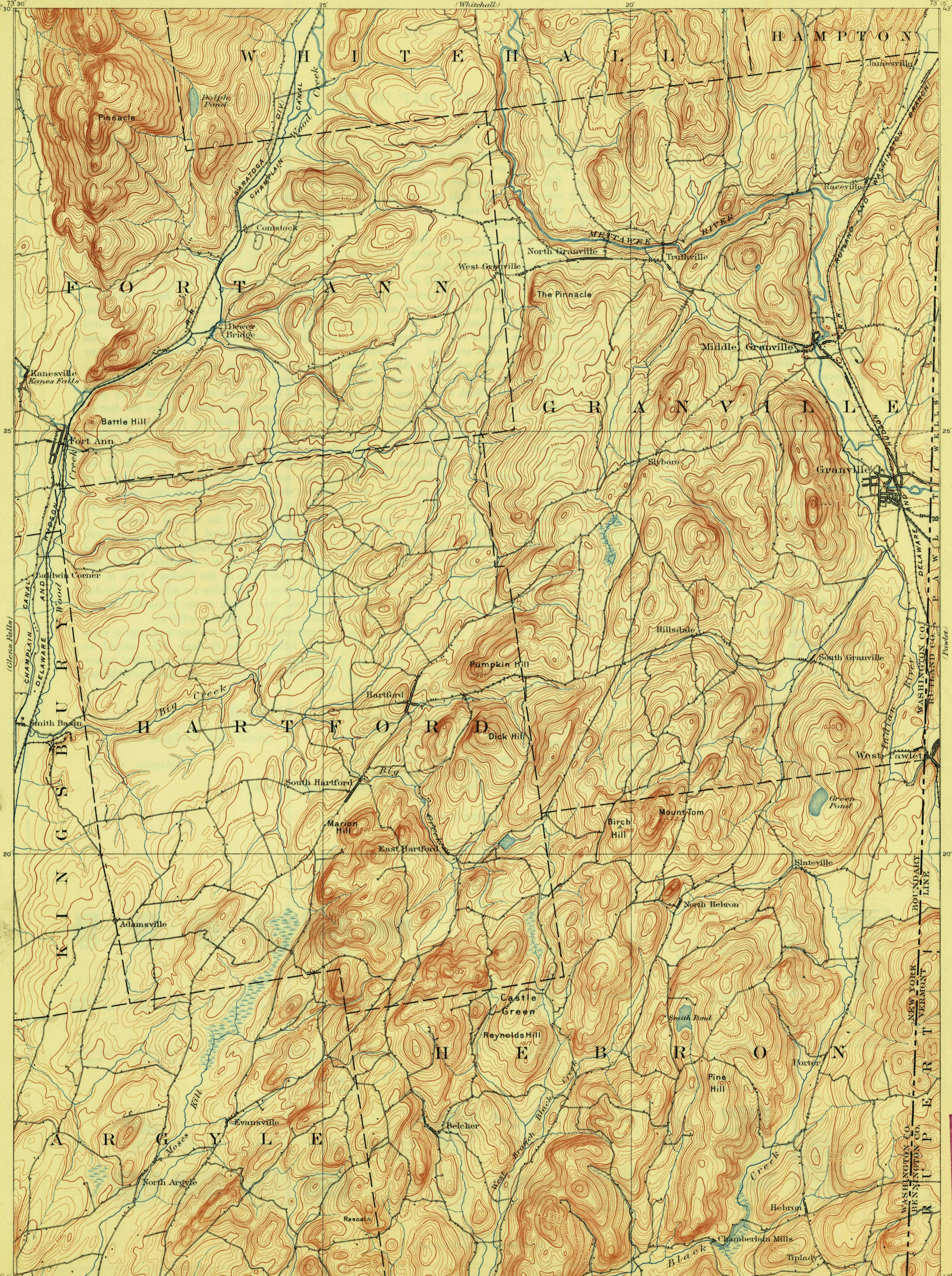


TOPOGRAPHY

STATE OF NEW YORK
REPRESENTED BY THE
STATE ENGINEER AND SURVEYOR
(Whitehall)

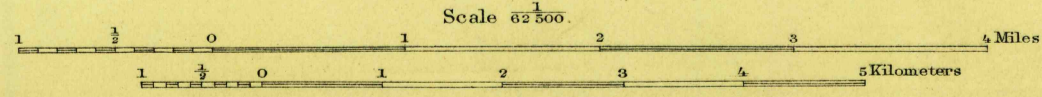
NEW YORK-VERMONT
FORT ANN QUADRANGLE
(Castleton)

U.S. GEOLOGICAL SURVEY
GEORGE OTIS SMITH, DIRECTOR



U.S.G.S.
FILE COPY
Ed. Div. Topographic Maps.

Henry Gannett, Chief Topographer.
H.M. Wilson, Geographer in charge.
Triangulation by S.S. Gannett.
Topography by G.E. Hyde.
Surveyed in 1893 in cooperation with the State of N.Y.



Contour interval 20 feet.
Datum is mean sea level.

Edition of April 1904, reprinted Dec. 1908.

DEC 31 1908 2599

USGS
Historical File
Topographic Division

FORT ANN, N.Y. - VT.