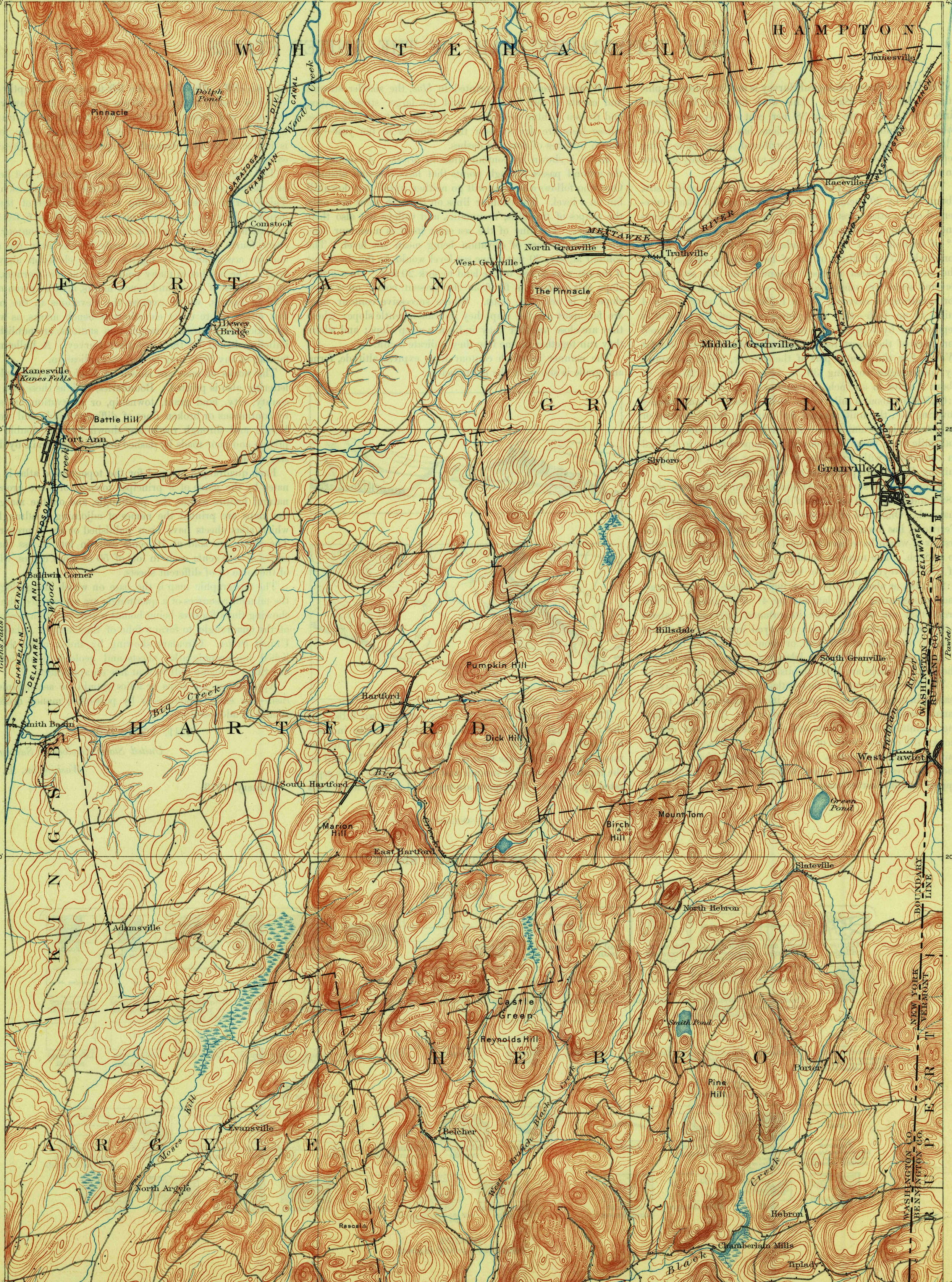


TOPOGRAPHY

STATE OF NEW YORK
REPRESENTED BY THE
STATE ENGINEER AND SURVEYOR
(Whitehall)

NEW YORK-VERMONT
FORT ANN QUADRANGLE

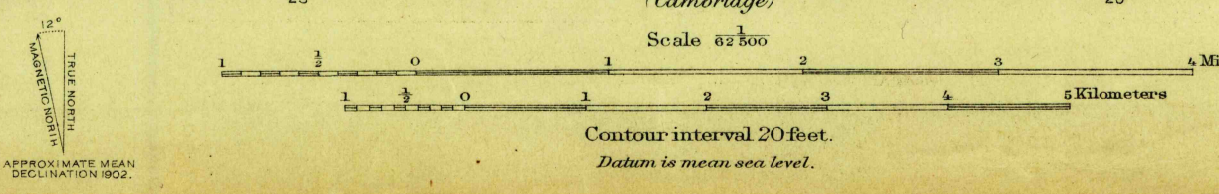
U.S. GEOLOGICAL SURVEY
GEORGE OTIS SMITH, DIRECTOR



U.S.G.S.
FILE COPY
Ed. Div. Topographic Maps.

U.S.G.S.
FILE COPY
Ed. Div. Topographic Maps.

Henry Gannett, Chief Topographer.
H.M. Wilson, Geographer in charge.
Triangulation by S.S. Gannett.
Topography by G.E. Hyde.
Surveyed in 1893 in cooperation with the State of N.Y.



Edition of April 1904, reprinted Mar. 1913

USGS
Historical File
Topographic Division

JUN 30 1913 5182

FORT ANN, N.Y.-VT.