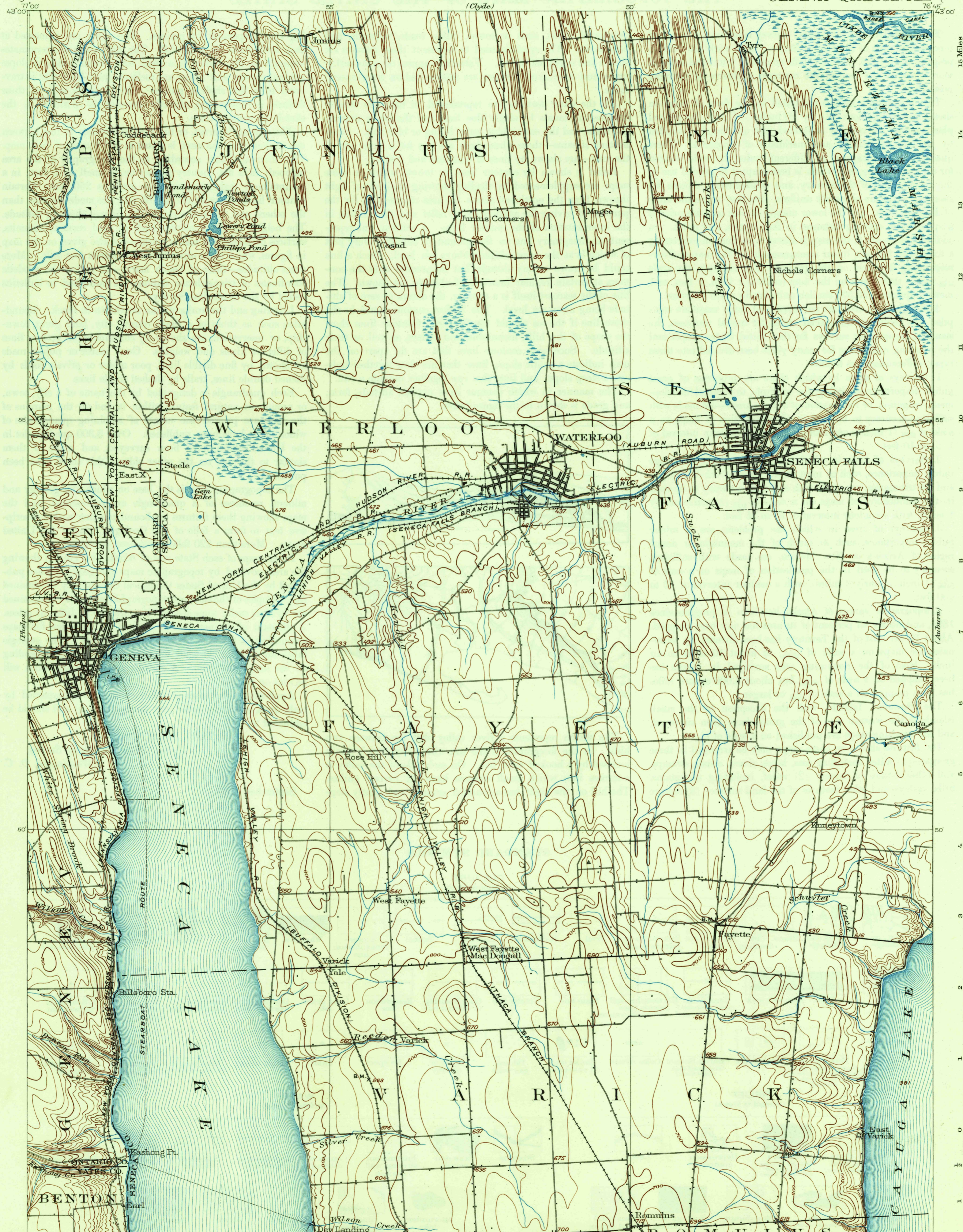
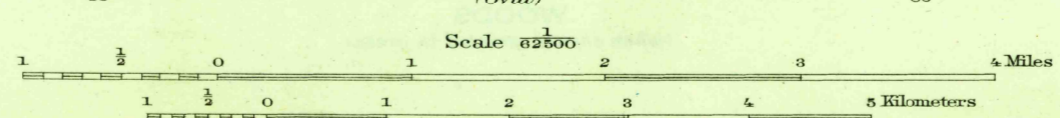


U.S.G.S.
FILE COPY
Inspection and Editing



ENGRAVED MAP 1902 BY U.S.G.S.
H.M. Wilson, Geographer in charge.
Control by W.T. Griswold and J.H. Wheat.
Topography by J.H. Jennings.
Surveyed in 1899 in cooperation with the State of New York.

APPROXIMATE MEAN
DECLINATION 1902



Scale 22800
Contour interval 20 feet.
Datum is mean sea level.

USGS
Historical File
Topographic Division

Edition of May 1902, reprinted 1937
Polyconic projection, North American datum

GENEVA, N.Y.

U.S.G.S.
FILE COPY
Inspection and Editing

1937 (1915)

1915