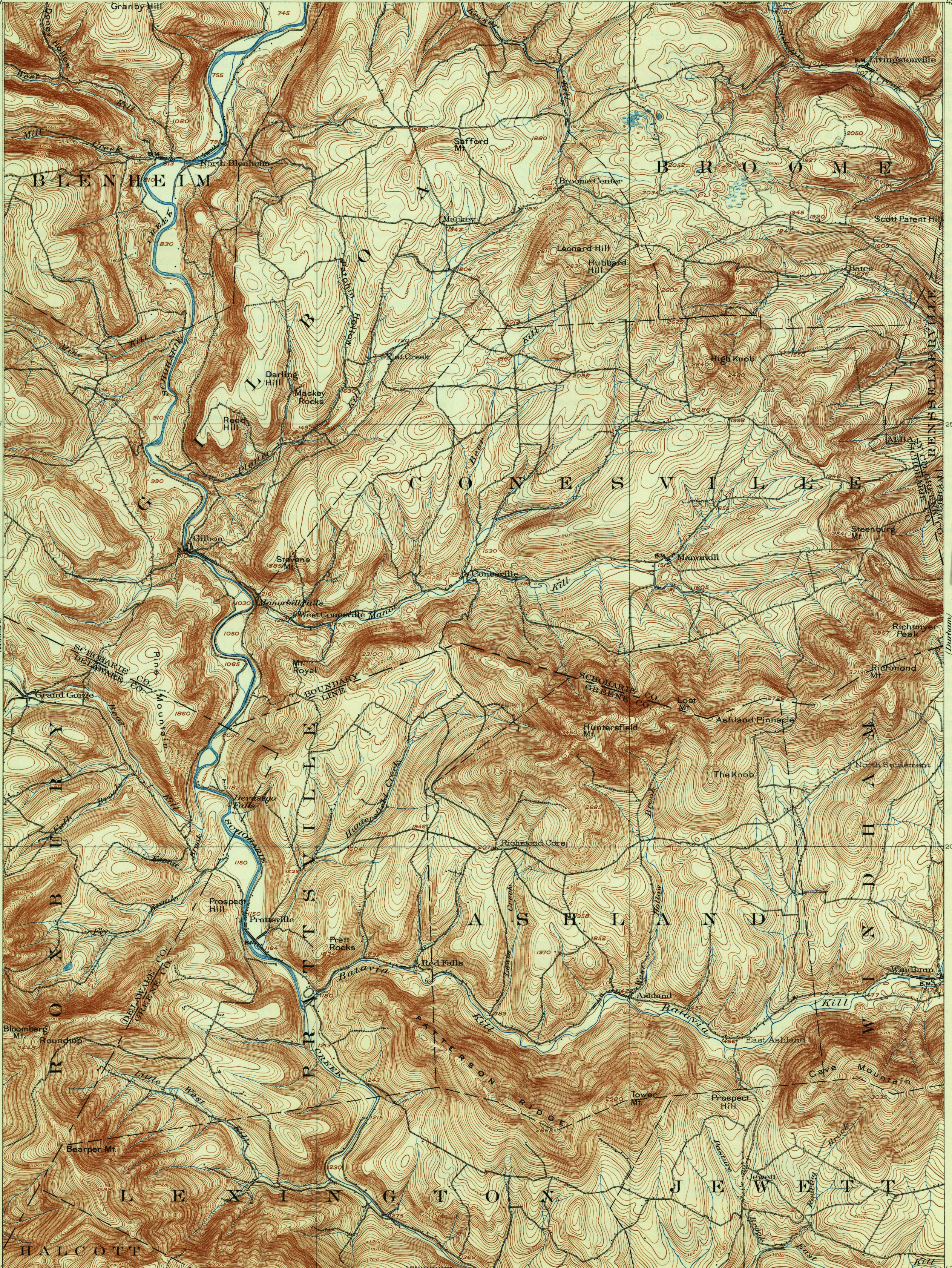


U. S. G. S.  
FILE COPY  
Inspection and Editing.



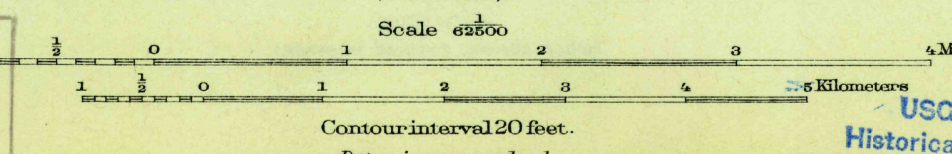
U. S. G. S.  
FILE COPY  
Inspection and Editing.

U. S. G. S.  
FILE COPY  
Inspection and Editing.



42°15' 74°30'  
H. M. Wilson, Geographer in charge.  
Control by S.S. Gannett and Gilbert Young.  
Topography by J. H. Jennings.  
Surveyed in 1901 in cooperation with the State of New York.

U. S. G. S.  
FILE COPY  
Inspection and Editing.



(Phoenicia)  
Scale 62500  
Edition of Oct. 1903, reprinted 1931  
Polyconic projection.  
USGS DEC 31 1931 (2575)  
GILBOA, N.Y.  
2575