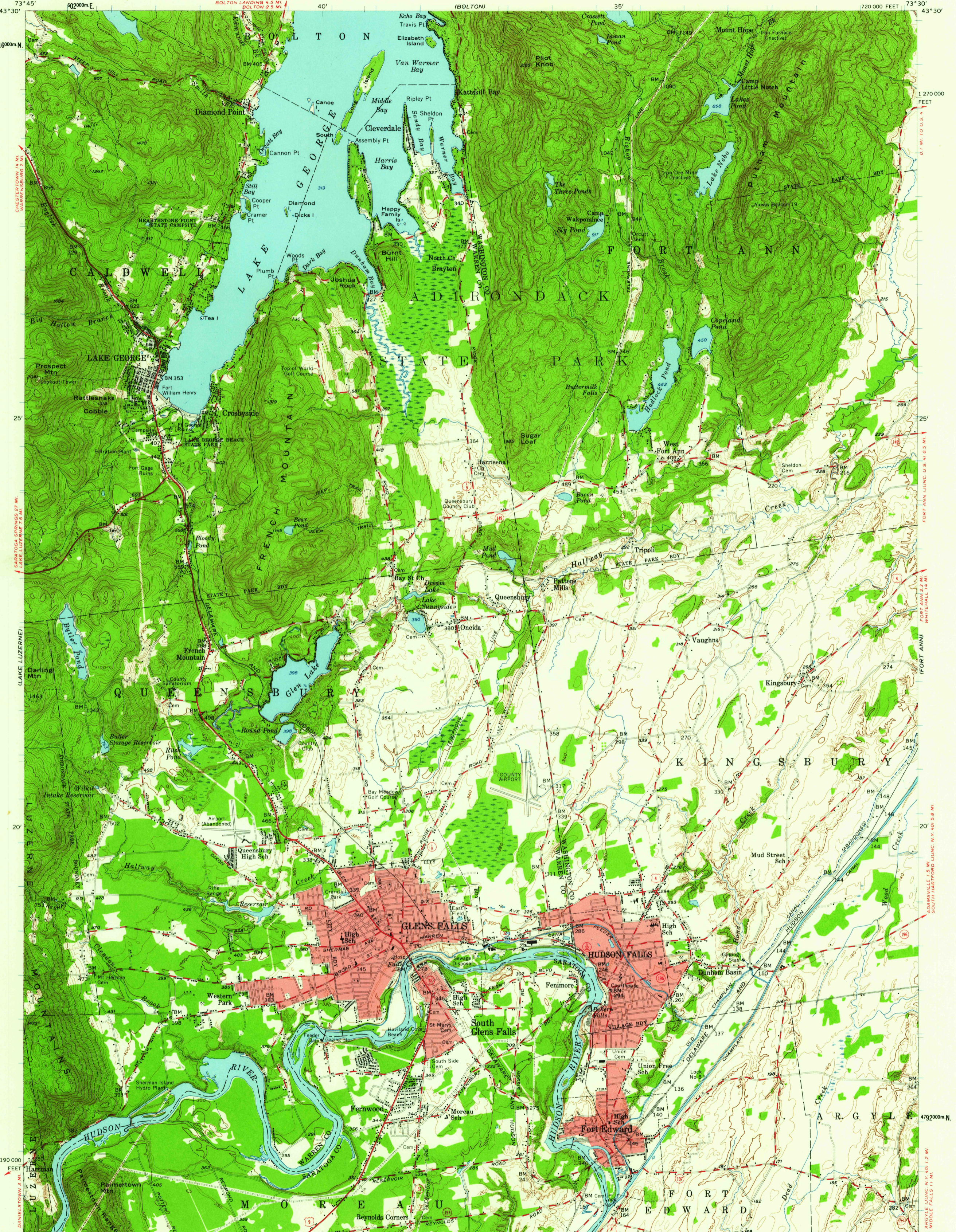
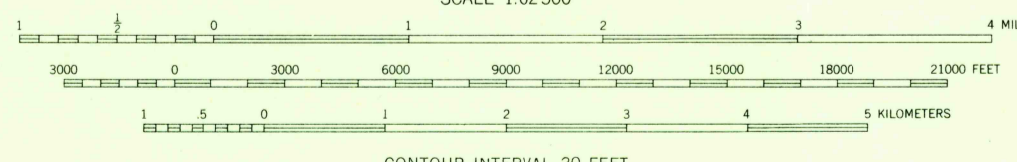
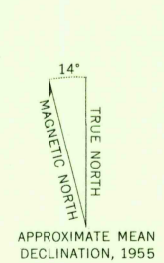


(NORTH CREEK)

(WHITEHALL)



Mapped, edited, and published by the Geological Survey
Control by USGS, USC&GS, USCE, and USLS
Topography from aerial photographs by photogrammetric methods
Aerial photographs taken 1947. Field check 1955
Polyconic projection. 1927 North American datum
10,000-foot grid based on New York coordinate system,
east zone
1000-meter Universal Transverse Mercator grid ticks,
zone 18, shown in blue
Red tint indicates areas in which only
landmark buildings are shown



USGS
Historical File
Topographic Division

ROAD CLASSIFICATION	
heavy-duty	Light-duty
Medium-duty	Unimproved dirt
U. S. Route	State Route



U.S.G.S. GLENS FALLS, N. Y.
N4315-W7330/15
1955
FILE COPY
TOPOGRAPHIC DIVISION

NOV 20 1959

6110