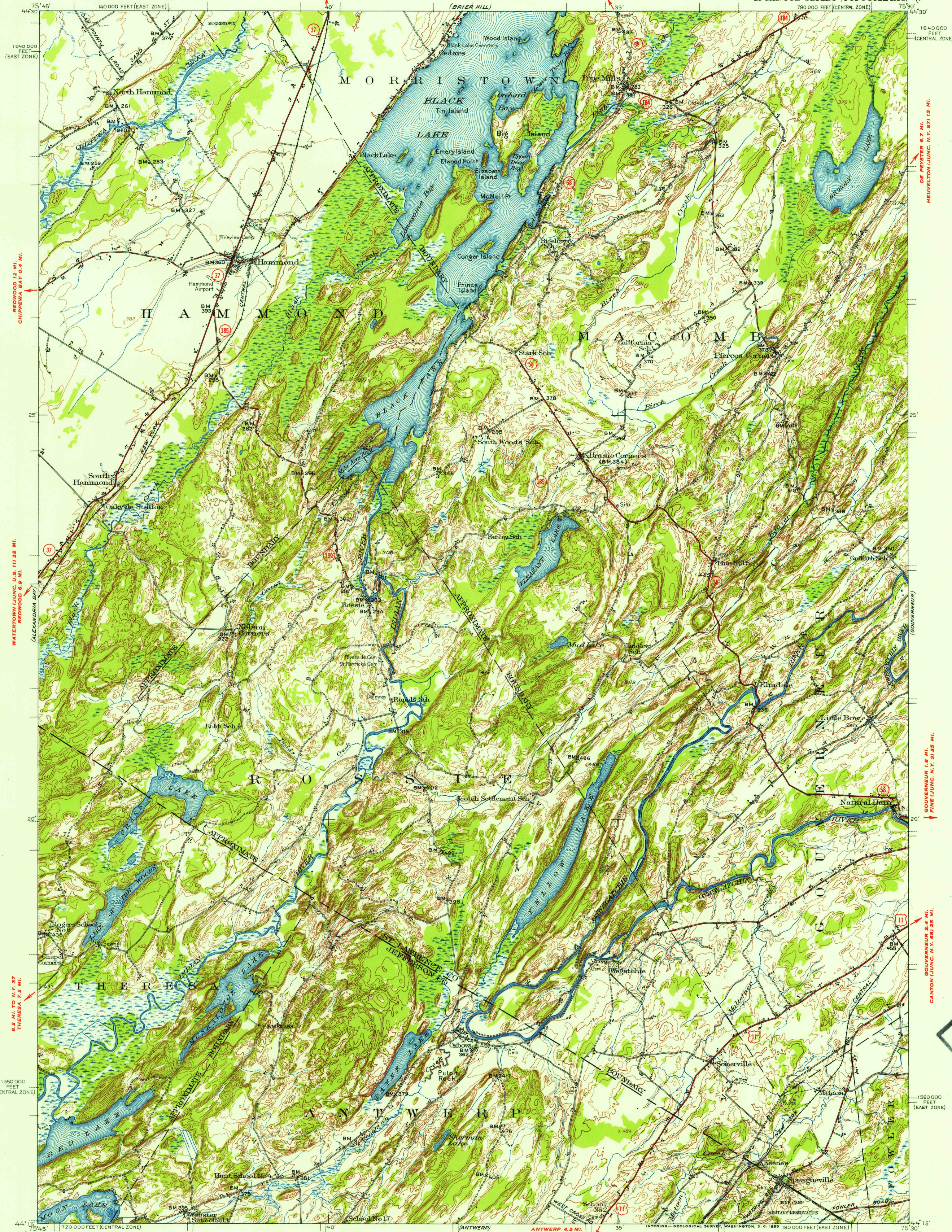


UNITED STATES
DEPARTMENT OF THE INTERIOR
GEOLOGICAL SURVEY

UNITED STATES
DEPARTMENT OF THE ARMY
CORPS OF ENGINEERS

HAMMOND QUADRANGLE
NEW YORK
15-MINUTE SERIES (TOPOGRAPHIC)

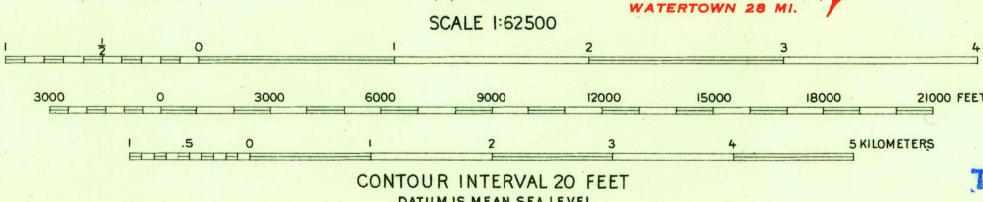


FILE COPY

FILE COPY

Map by the Army Map Service
Published for civil use by the Geological Survey
Control by USCGS, USGS, TVA, and USCE
Topography from aerial photographs by multiplex methods
Aerial photographs taken 1947, field check 1949
Polyconic projection, 1927 North American datum
10,000-foot grids based on New York coordinate system,
east and central zones
No distinction is made between dwellings, barns,
commercial and industrial buildings
Unchecked elevations are shown in brown

TRUE NORTH
MAGNETIC NORTH
APPROXIMATE MEAN
DECLINATION, 1949



FOR SALE BY U.S. GEOLOGICAL SURVEY, WASHINGTON 25, D. C.
A FOLDER DESCRIBING TOPOGRAPHIC MAPS AND SYMBOLS IS AVAILABLE ON REQUEST

USCGS
Historical File
Topographic Division

ROAD CLASSIFICATION
Heavy-duty 4 LANE 6 LANE Light-duty
Medium-duty 4 LANE 6 LANE Unimproved dirt
U. S. Route State Route

This area is also covered by 1:24,000 scale
maps of the Pope Mills, Hammond,
Muskalonge Lake, and Natural Dam
7.5 minute quadrangles

HAMMOND, N.Y.
N4415-W7530/15
1949

MAY 5 1954
3190