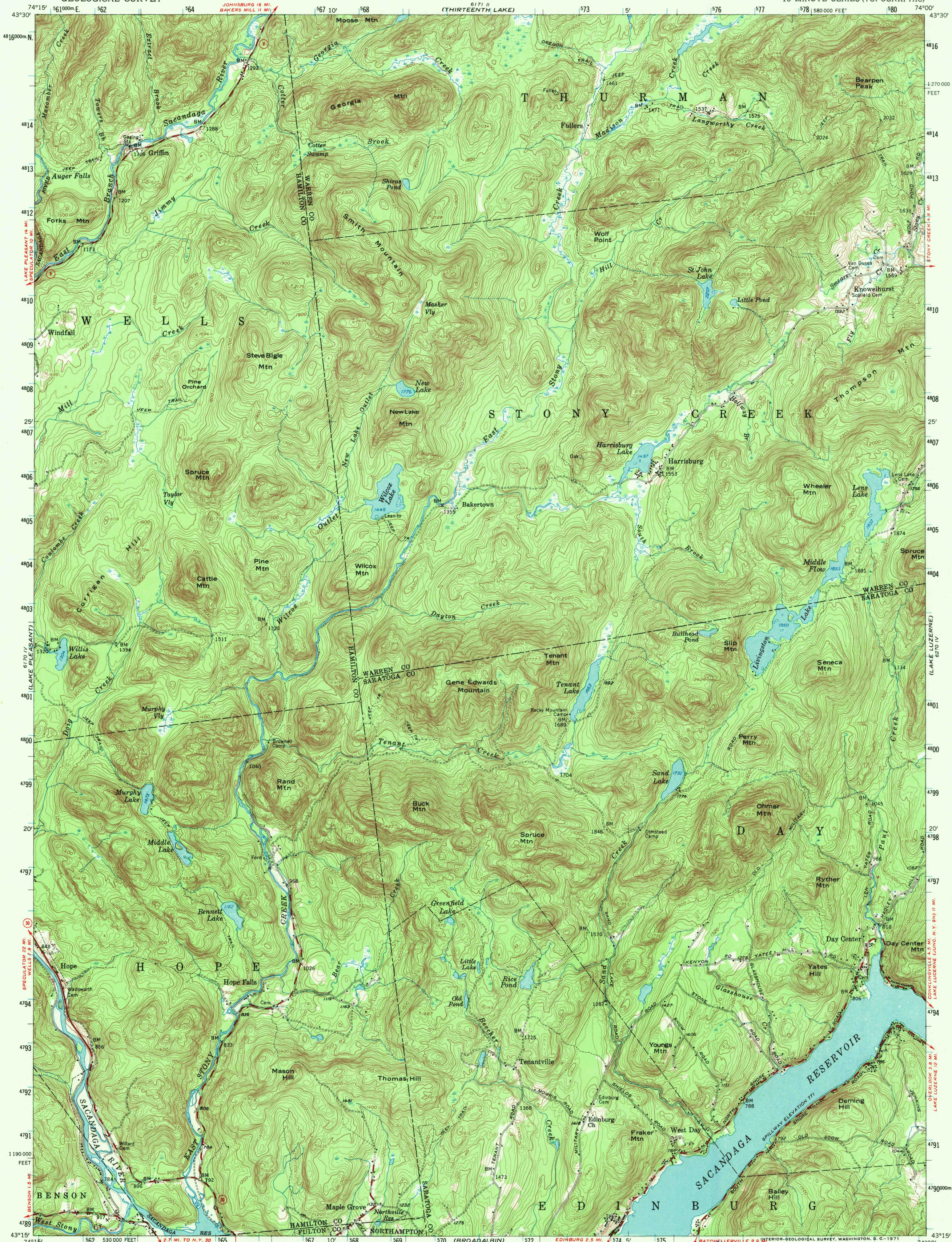
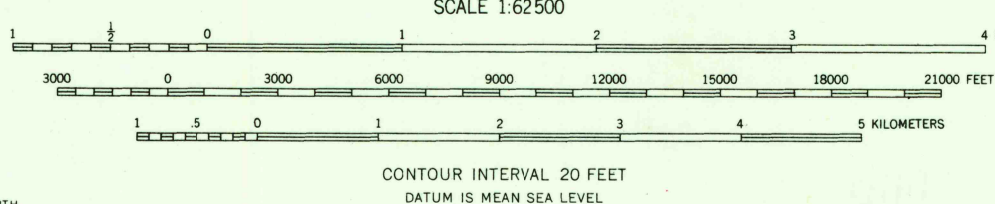
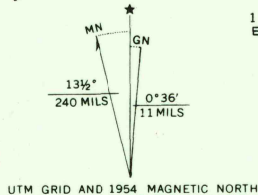


UNITED STATES  
DEPARTMENT OF THE INTERIOR  
GEOLOGICAL SURVEY

HARRISBURG QUADRANGLE  
NEW YORK  
15 MINUTE SERIES (TOPOGRAPHIC)



Mapped, edited, and published by the Geological Survey  
Control by USGS and USC&GS  
Topography from aerial photographs by photogrammetric methods  
Aerial photographs taken 1953. Field check 1954  
Polyconic projection. 1927 North American datum  
10,000-foot grid based on New York coordinate system,  
east zone.  
1000-meter Universal Transverse Mercator grid ticks,  
zone-18, shown in blue  
Entire area lies within the Adirondack State Park  
Unchecked elevations are shown in brown



ROAD CLASSIFICATION  
Heavy-duty ——— Light-duty ———  
Medium-duty ——— Unimproved dirt ———  
State Route —○—



U.S.G.S.  
FILE COPY  
TOPOGRAPHIC DIVISION

HARRISBURG, N.Y.  
N4315-W7400/15  
1954  
AMS 6170 I-SERIES V721

10585  
Feb. 11, 1971